

FILED ϕ
RECEIVED *Jh*

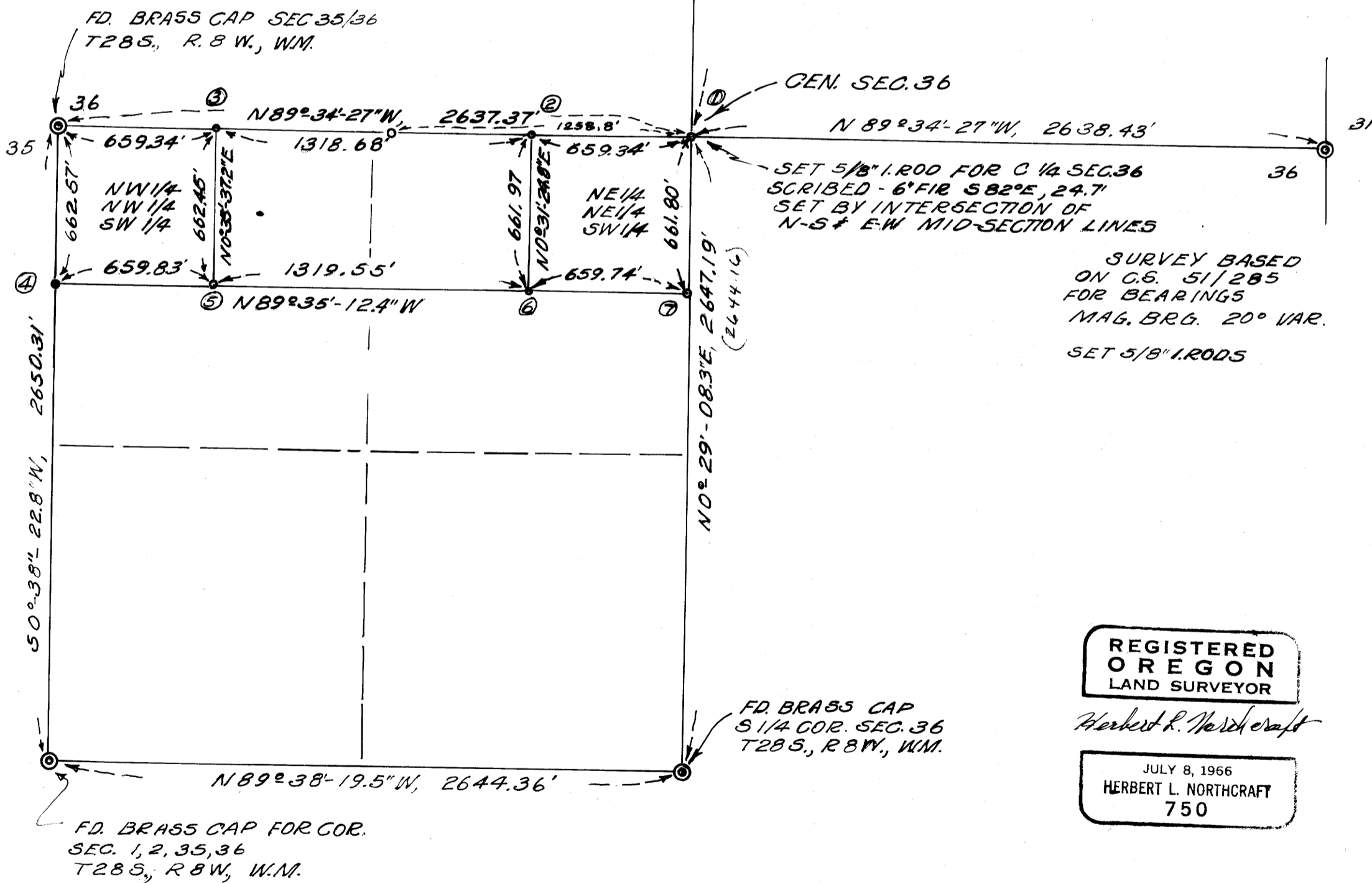
DEC 17 1979

COUNTY SURVEYOR
DOUGLAS COUNTY, ORE.

ϕ

MON. SET	BEARING TO TREE	SCRIBES
① SET 5/8" I. ROD	6" FIR, S82°E, 25'	C 1/4 S 36, BT
② SET 3/8" I. ROD	4" FIR, S28°E, 15.8'	C-W, 1/64, S 36, BT
③ SET 5/8" I. ROD	6" FIR, N46°W, 18.3'	WW 1/64, S 36, BT
④ SET 5/8" I. ROD	10" FIR, N67°E, 33.0'	S 1/64, S 36, BT
⑤ 1 1/2" x 3/16" DRILL STEEL	14" FIR, S48°E, 37.5'	NW-SW 1/64, S 36, BT
⑥ 1 1/2" x 3/16" DRILL STEEL	12" FIR, N14°E, 13.8'	NE-SW 1/64, S 36, BT
⑦ SET 5/8" I. ROD	10" FIR, N12°E, 19.8'	C-S 1/64, S 36, BT
⑧ " 5/8" x 3/16" I. ROD	8" FIR, S35 3/4°W, 23.0'	S 1/64, S 35, BT

FD. BRASS CAP - FOR
1/4 COR. SEC 25/36
T28S, R8W, W.M., BY C.S. 54/78



MAX LOCKWOOD
TEN MILE, OREGON

SURVEY TO SUBDIVIDE SEC. 36
T.28S, R.8W, W.M., DOUGLAS CO, OREGON.

SCALE 1"=500' MAY, 1970
SURVEY BY HERBERT L. NORTHCRAFT

COUNTY SURVEYORS FILE DATA
DO NOT REMOVE FROM OFFICE