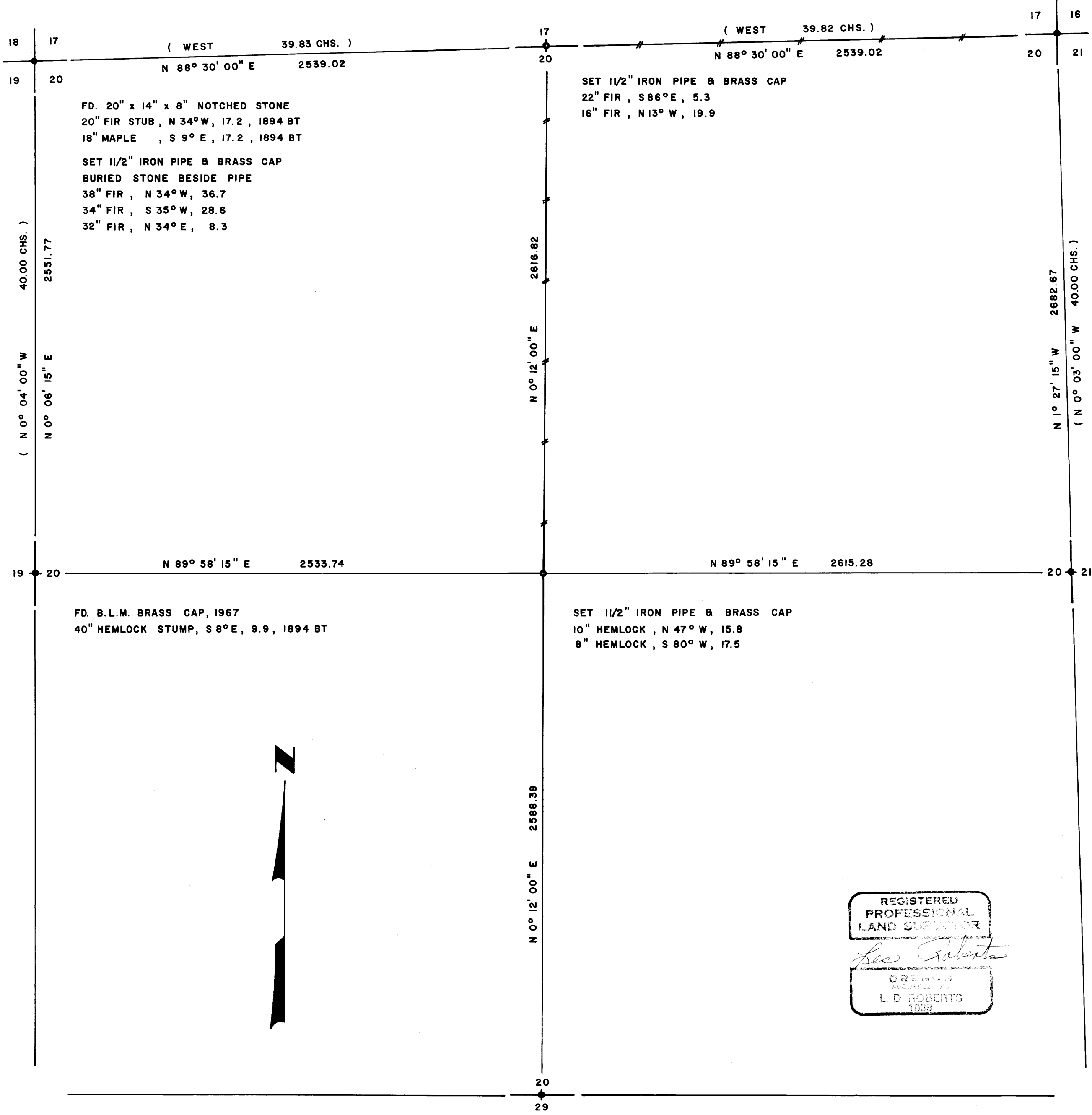


18



FD. DOUGLAS COUNTY BRASS CAP, 1964  
ALSO FOUND NOTCHED STONE  
50" FIR , N 19° E , 17.8 , 1894 BT  
48" FIR , N 40° W , 5.9 , 1894 BT  
45" FIR , S 65° W , 56.1 , 1894 BT  
23" FIR , S 49° E , 60.7 , 1894 BT  
14" HEMLOCK , S 58° W , 49.5 , 1964 BT

I, LESLIE D. ROBERTS, REGISTERED PROFESSIONAL LAND SURVEYOR, DO CERTIFY THAT I HAVE CORRECTLY SURVEYED SAID SECTION 20 IN ACCORDANCE TO THE MANUAL OF INSTRUCTIONS FOR THE SURVEY OF THE PUBLIC LANDS OF THE UNITED STATES. THE NORTH 1/4 CORNER OF SAID SECTION 20 WAS SET BY SINGLE PROPORTIONATE MEASURE. THE CENTER 1/4 CORNER WAS SET AT THE INTERSECTION OF THE N-S AND E-W CENTER LINES. CLOSED TRANSIT TRAVERSES, WITH A MINIMUM ERROR OF CLOSURE OF 1'/5000', WERE RUN FOR CONTROL. OFFSETS TO THE TRUE LINE WERE CALCULATED AND USED TO BLAZE AND MARK THE TRUE PROPERTY LINE.

FD. ORIGINAL 28" CEDAR CORNER TREE  
34" CEDAR , N 79 1/2° E , 14.5 , 1894 BT  
16" DOWNED CEDAR , N 77 1/2° W , 19.8 , 1894 BT  
BRASS CAP , N 45° W , 13.2 , 1966 RM

SURVEY OF  
SECTION 20, T21S, R9W, W.M.  
DOUGLAS COUNTY, OREGON  
FOR  
INTERNATIONAL PAPER COMPANY  
BY  
TRIANGLE ENGINEERING COMPANY  
1262 LAWRENCE STREET  
EUGENE, OREGON 97401  
NOVEMBER 1979

LEGEND  
● CORNERS FOUND AND USED FOR CONTROL  
○ CORNERS SET  
--- LINES MARKED WITH RED PAINTED BLAZES, 5/8" RODS, TAGS AND RED RIBBON  
SCALE 1" = 400'  
BASIS OF BEARING, SOLAR OBSERVATION  
DISTANCE TO BEARING TREES ARE CENTER MEASURE  
ALL BEARING TREES ARE SCRIBED

REGISTERED  
PROFESSIONAL  
LAND SURVEYOR  
*Leslie Roberts*  
OREGON  
AUGUST 22, 1977  
L. D. ROBERTS  
1939

1981-45

MAP FILE 1181-45