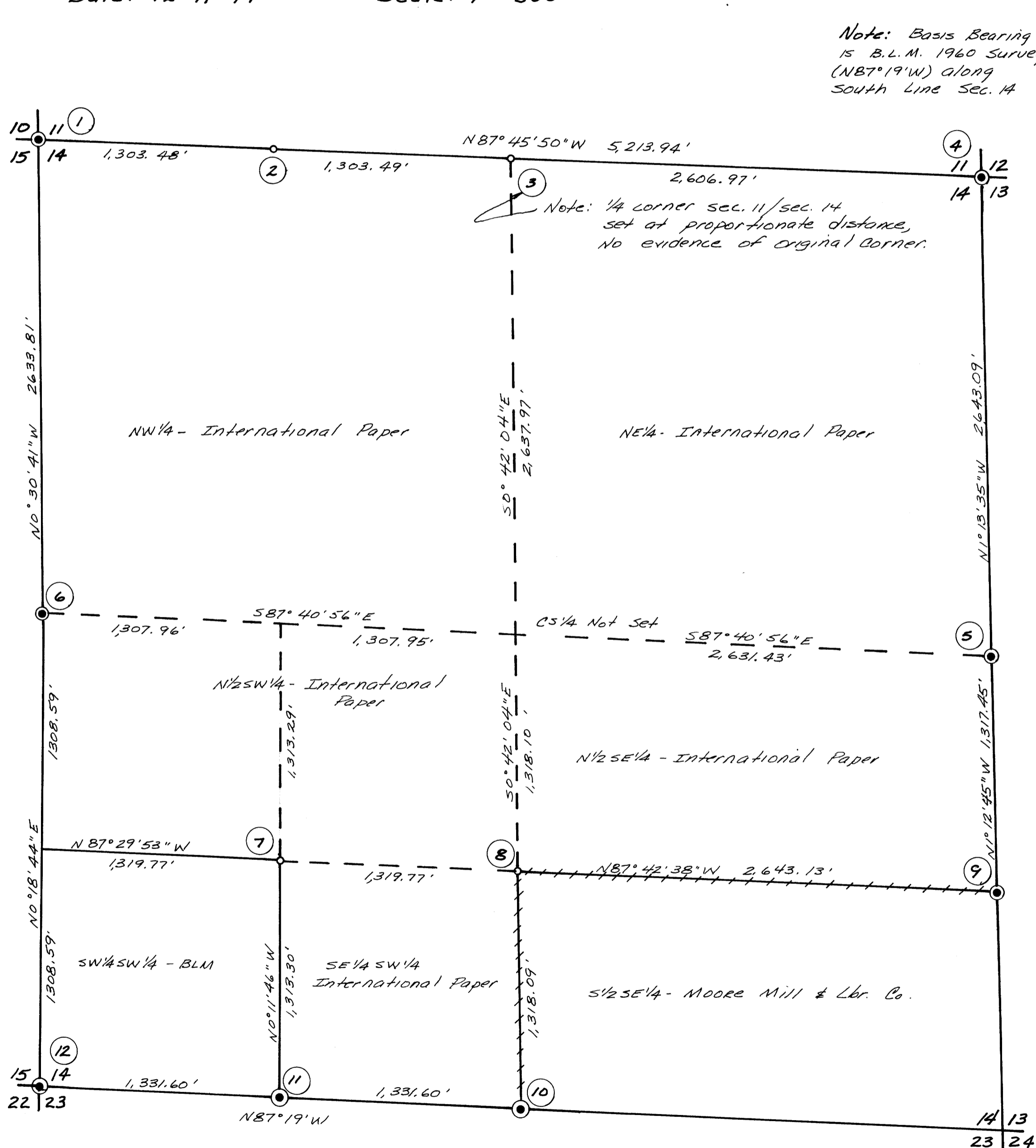


SUBDIVISION SEC. 14, T.21S., R.11W., W.M., DOUGLAS CO., OREGON

Date: 12-11-79

Scale: 1" = 500'

Note: Basis Bearing
is B.L.M. 1960 Survey
(N87°19'W) along
south line Sec. 14



CORNER NOTES:

- ① N.W. Corner Section 14, Found 1960 B.L.M. Brass Cap from which: 18" Cedar N66°E 16 lks.; 28" Hemlock S33°E 12 lks.; 18" Cedar S77°W 24 lks.; 22" Cedar N39°W 29 lks.
- ② Set 2"x36" B.C.I.P. at West 1/6 mtd. "PLS 1342 W 1/6 S11/514 1979" from which I scribe: 12" D.F. N52°E 28.4'; 14" D.F. S3°W 4.7'.
- ③ Set 2"x36" B.C.I.P. at 1/4 corner mtd. "PLS 1342 1/4 S11/514 1979" from which I scribe: 8" Chittum N65°W 14.7'; 10" D.F. S76°E 12.4'.
- ④ N.E. Corner Section 14, Found 1957 B.L.M. B.C.I.P. from which: I scribe 14" D.F. N53°W 26.0'; I scribe 12" D.F. S77°W 33.9'; Found 30" D.F. Stump/scribes S52°W 150 lks.; I scribe B" D.F. S15°E 45.8'; Found 30" Stump/scribes S84°E 96.0'; I scribe 6" D.F. N89°E 23.4'.
- ⑤ Found 1957 B.C.I.P. (B.L.M.) at 1/4 corner from which: 58" D.F. S28°E 54 lks.; 62" D.F. S19°W 47 lks.
- ⑥ Found 1960 B.L.M. B.C.I.P. at 1/4 corner from which: 6" cherry N53°W 5.7'; 40" Maple clump S29°W 59 lks.
- ⑦ Set 2"x36" B.C.I.P. at SW 1/6 corner mtd. "PLS 1342 SW 1/6 S14 1979", from which I scribe: 10" cedar N36°E 42.3'; 48" Cedar N73°W 15.0'.
- ⑧ Set 2"x36" B.C.I.P. at C-C S 1/6 corner, mtd. "PLS 1342 1/6 C-C S14 1979", from which I scribe: 14" Alder N51°E 8.0'; 28" D.F. S25°E 37.2'.
- ⑨ Found 1957 B.L.M. B.C.I.P. at S 1/6 corner, from which: 24" D.F. N9°E 12 lks.; 28" D.F. S34°W 7 1/2 lks.
- ⑩ Found 1960 B.L.M. B.C.I.P. for 1/4 corner from which: 14" cedar N44 1/2°W 12 lks.; 20" D.F. S73 1/2°E 21 lks.
- ⑪ Found 5/8" iron rod at West 1/6 corner, from which: 16" Alder N58°W 15.6'; 28" Alder N5°E 41.0'.
- ⑫ S.W. Corner Section 14, found 1960 B.L.M. B.C.I.P. from which: 53" D.F. N47°E 77 lks.; 30" Cedar S62°E 31 lks.; 38" Cedar S82°W 59 lks.; 42" D.F. N14°W 21 lks.

LEGEND:

- Corners Found \odot
- Corners Set \circ
- Property Lines Marked + + + +

Survey For:

International Paper Co.
Gardiner, Oregon

Survey By:

Stuntzner Engineering & Forestry
P.O. Box 118
Coos Bay, Oregon

REGISTERED
PROFESSIONAL
LAND SURVEYOR

Ronald E. Stuntzner

OF OREGON
SEPTEMBER 23, 1977
RONALD E. STUNTZNER
1342