

FILED ϕ
RECEIVED ϕ
DEC 13 1979
COUNTY SURVEYOR
DOUGLAS COUNTY, ORE.
 ϕ

SUBDIVISION SECTION 26, T.20S., R.10W., W.M. DOUGLAS COUNTY OREGON

SURVEY FOR
INTERNATIONAL PAPER CO.
BOX 43 GARDINER, OREGON

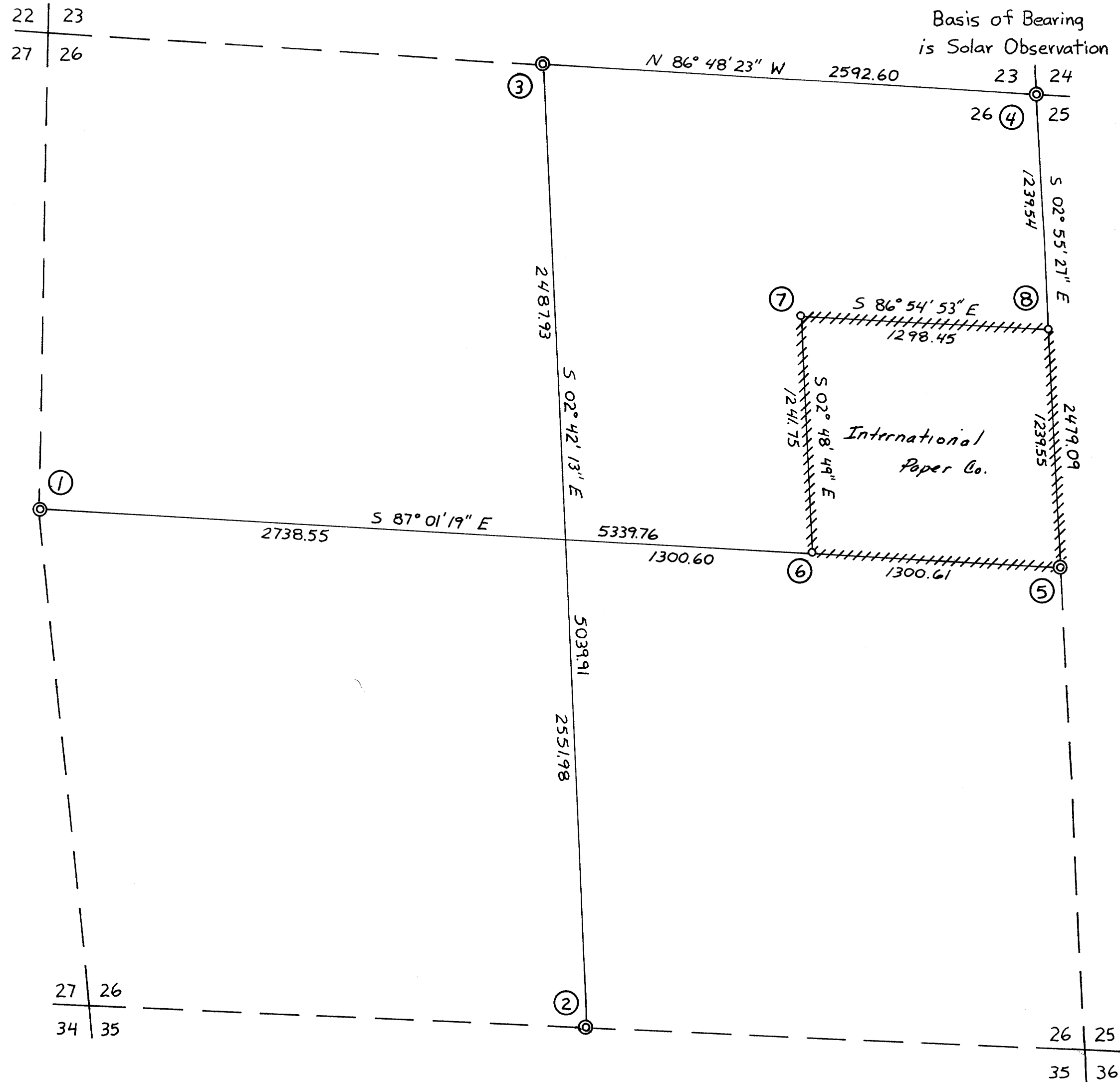
SURVEY BY
STUNTZNER ENGINEERING & FORESTRY
375 PARK ... P.O. BOX 118 COOS BAY, OREGON

LEGEND

- \circ corners set
- \odot corners found
- +++++ property lines posted & blazed
- scale: 1 inch = 500 feet
- date: Nov. 16, 1979

CORNER NOTES

- ① W 1/4 cor. Section 26. Found corner tree with blaze in bark. Bearing trees as per 1951 Dependent Resurvey of Portion of Subdivisional Lines of T.20S., R.10W., page 41.
- ② S 1/4 cor. Section 26. Found brass cap on 1 in. diam. iron post. Bearing trees as per 1951 Dependent Resurvey of Portion of Subdivisional Lines of T.20S., R.10W., page 40.
- ③ N 1/4 cor. Section 26. Found brass cap on 1 in. diam. iron post, from which: a 14 in. hemlock stump scribed "1/4 S26 BT" bears S16°E 65.3 feet; a 8 in. alder with I.P.Co. tag bears west 8.3 feet.
- ④ NE cor. Section 26. Found brass cap on 1 in. diam. iron post. Bearing trees as per 1951 Dependent Resurvey of Portion of Subdivisional Lines of T.20S., R.10W., page 28.
- ⑤ E 1/4 cor. Section 26. Found brass cap on 1 in. diam. iron post, from which: a 14 in. D-f with healed face bears N36°E 10.0 feet; a 36 in. D-f with healed face bears S55 1/2°W 25.7 feet.
- ⑥ CE 1/16 cor. Section 26. Set 1 1/2 in. BCIP, from which: 52 in. D-f scribed "BT CE 1/16" bears N33°W 55.2 feet; 32 in. maple scribed "BT CE 1/16" bears S58°W 32.5 feet. Found unrecorded 2 in. sq. leaning wooden post bears N10°E 7.6 feet, from which: same 32 in. maple has BLM tag reading N47°80'E 39.5 feet.
- ⑦ NE 1/16 cor. Section 26. Set 1 1/2 in. BCIP, from which: 16 in. maple bark scribed "BT NE 1/16" bears N57°W 16.9 feet; a 80 in. D-f scribed "BT NE 1/16" bears N60°E 50.2 feet. Found 2 in. sq. wooden post (fallen over) marked by same 16 in. maple with BLM tag reading N86 1/2°W (reversed bearing) 27.1 feet.
- ⑧ N 1/16 cor. Section 25 and 26. Set 1 1/2 in. BCIP, from which: 28 in. D-f scribed "BT N 1/16 S26" bears N60°W 44.3 feet; a 34 in. D-f scribed "BT N 1/16 S25" bears S44°E 37.8 feet. Found unrecorded 3/8 in. sq. iron bar N54°19'07"W 1.67 feet of set BCIP, from which: a location marker on a log bears N64 3/4°E 2 feet.



REGISTERED
PROFESSIONAL
LAND SURVEYOR

Ronald E. Stuntzner
OREGON
SEP 23, 1977
RONALD E. STUNTZNER
1342

MAP FILE M 81 - 42

MAP FILE M 81 - 42