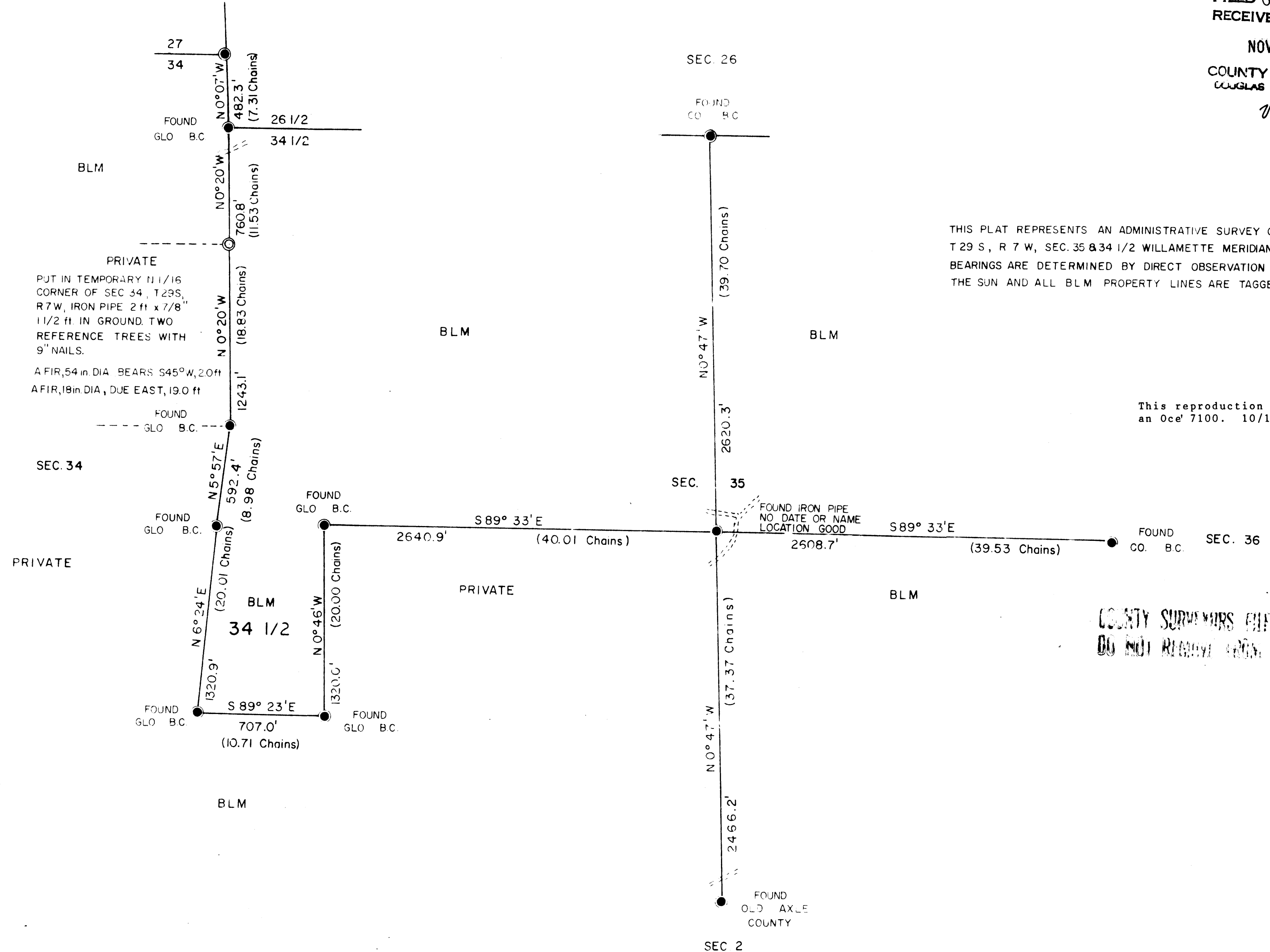
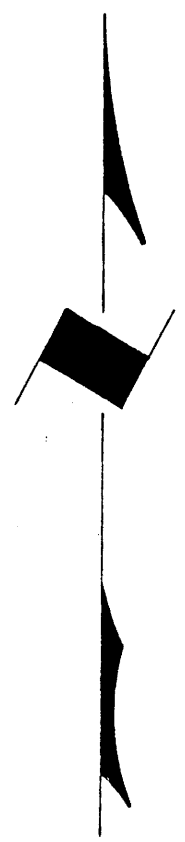


TOWNSHIP 29 SOUTH, RANGE 7 WEST, OF THE WILLAMETTE MERIDIAN, OREGON

ADMINISTRATIVE SURVEY

FILED &
RECEIVED *sh*
NOV 26 1979
COUNTY SURVEYOR
WILLAMETTE COUNTY, ORE

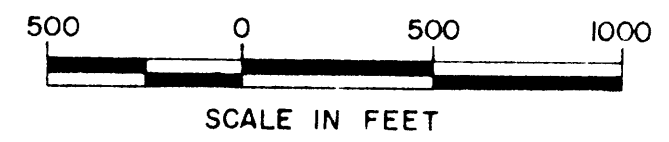


THIS PLAT REPRESENTS AN ADMINISTRATIVE SURVEY OF T 29 S, R 7 W, SEC. 35 & 34 1/2 WILLAMETTE MERIDIAN. BEARINGS ARE DETERMINED BY DIRECT OBSERVATION OF THE SUN AND ALL BLM PROPERTY LINES ARE TAGGED.

This reproduction made on an Oce' 7100. 10/15/93

COUNTY SURVEYORS FILE DATA
DO NOT REMOVE FROM OFFICE

- LEGEND
- CORNERS FOUND
 - DIRT ROAD
 - CORNERS SET



U.S. BUREAU OF LAND MANAGEMENT
ROSEBURG DISTRICT OREGON
DRAWN BY PAUL BENTLEY DATE 1-9-79
SURVEYED BY ALEX TUPYI DATE JUNE 1978
APPROVED BY *Bruce P. Chamber* DATE 7-2-79
DISTRICT ENGINEER

MAP FILE M81-7

MAP FILE M81-7