

MAJOR LAND PARTITION

IN SECTION 15, T.28S. R.6W. W.M.

JANUARY 1979

SCALE: 1"=100'

DEC 6 1978

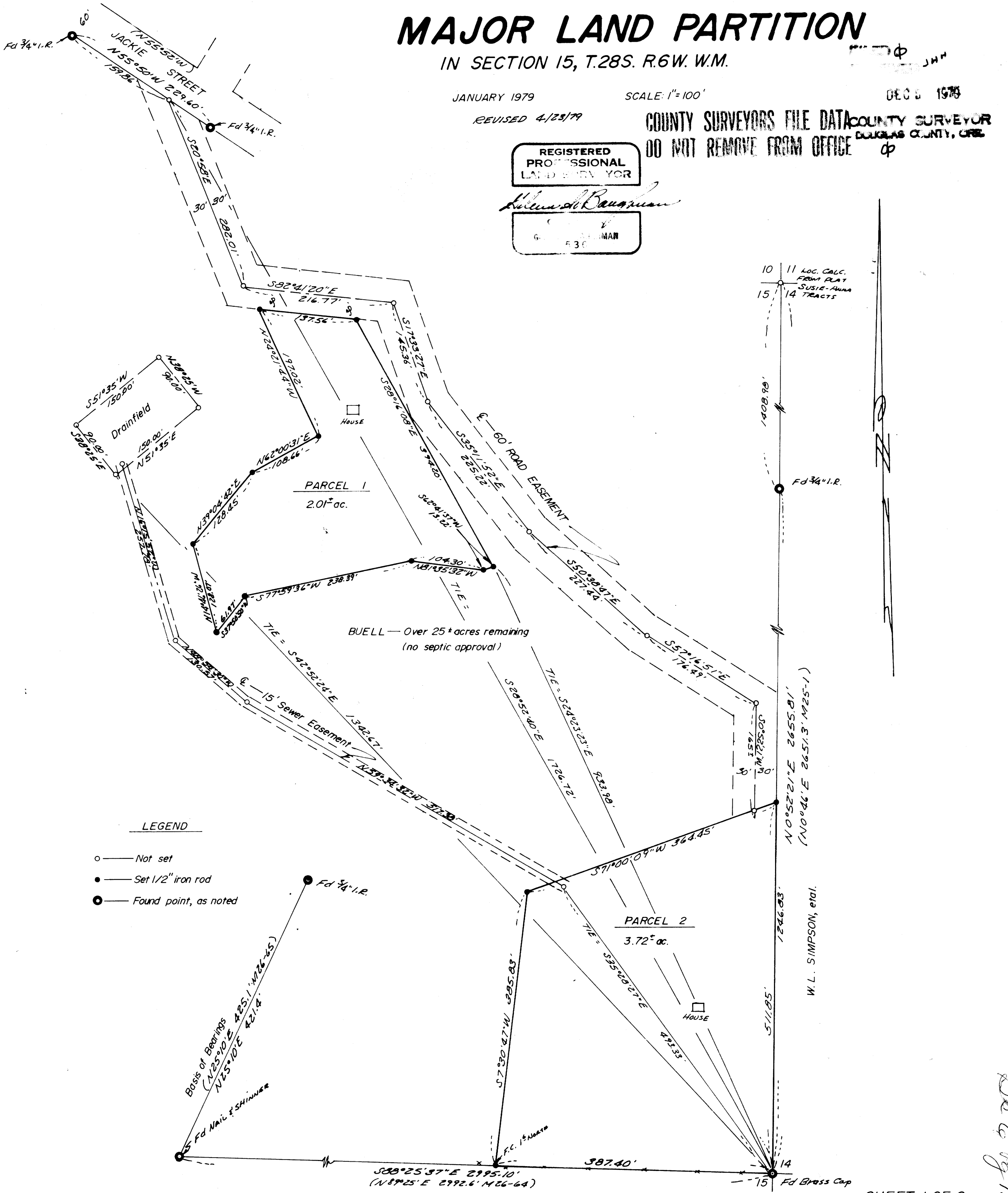
REVISED 4/23/79

COUNTY SURVEYORS FILE DATA COUNTY SURVEYOR
DO NOT REMOVE FROM OFFICE DOUGLAS COUNTY, ORE

REGISTERED PROFESSIONAL LAND SURVEYOR

Alvin S. Baughman

630 MAR



LEGEND

- — Not set
- — Set 1/2" iron rod
- ⊙ — Found point, as noted

366-13-14