

# TOWNSHIP 29 SOUTH, RANGE 4 WEST, OF THE WILLAMETTE MERIDIAN, OREGON

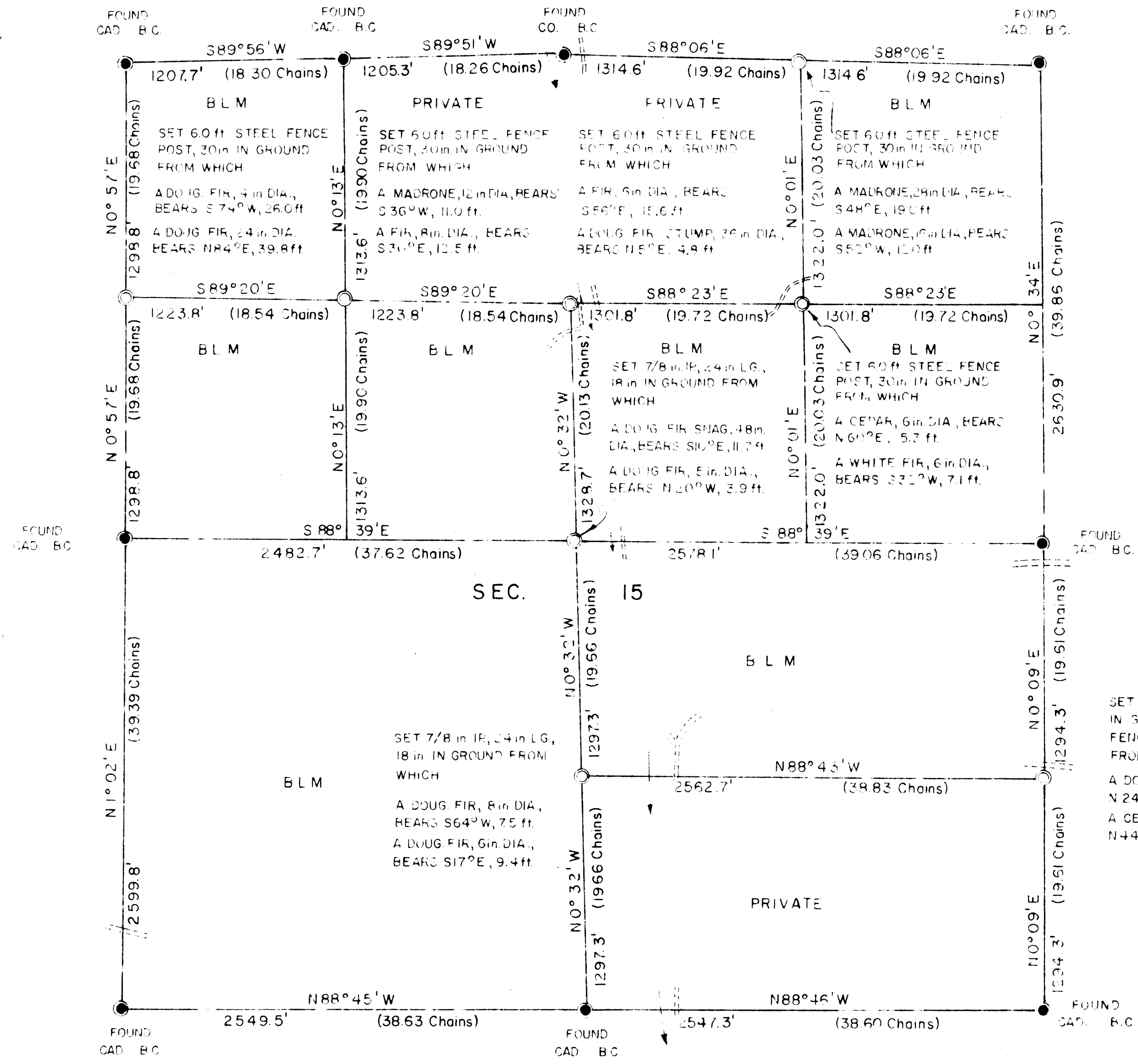
## ADMINISTRATIVE SURVEY

FILED &  
RECEIVED *jh*

NOV 26 1979

COUNTY SURVEYOR  
WAGGLAS COUNTY, ORE.

MAP FILE *MS 1-3*



THIS PLAT REPRESENTS AN ADMINISTRATIVE SURVEY OF T 29 S, R 4 W, SEC. 15, WILLAMETTE MERIDIAN. BEARINGS ARE DETERMINED BY DIRECT OBSERVATION OF THE SUN AND ALL BLM PROPERTY LINES ARE TAGGED. REFERENCE TREE DISTANCE IS TO FACE OF TREE

COUNTY SURVEYORS USE DATA  
DO NOT REMOVE FROM OFFICE

This reproduction made on  
an Oce 7100. 10/15/93

SET 7/8 in IR, 24 in LG, 1 in IN GROUND, ALSO A 6.0 ft. STEEL FENCE POST 30 in IN GROUND FROM WHICH  
A DOUG FIR, 5 in DIA., BEARS N 24° W, 26.5 ft.  
A CEDAR SNAG, 18 in DIA., BEARS N 44° E, 19.6 ft.

- LEGEND
- CORNERS FOUND
  - CORNERS SET
  - INTERMITTENT STREAM
  - ROADS



U.S. BUREAU OF LAND MANAGEMENT

ROSEBURG DISTRICT OREGON

DRAWN BY PAUL BENTLEY DATE 11-24-78

SURVEYED BY ALEX TUPYI DATE AUGUST 1978

APPROVED BY *Bruce P. Chamberlain* DATE 7-2-79  
DISTRICT ENGINEER