

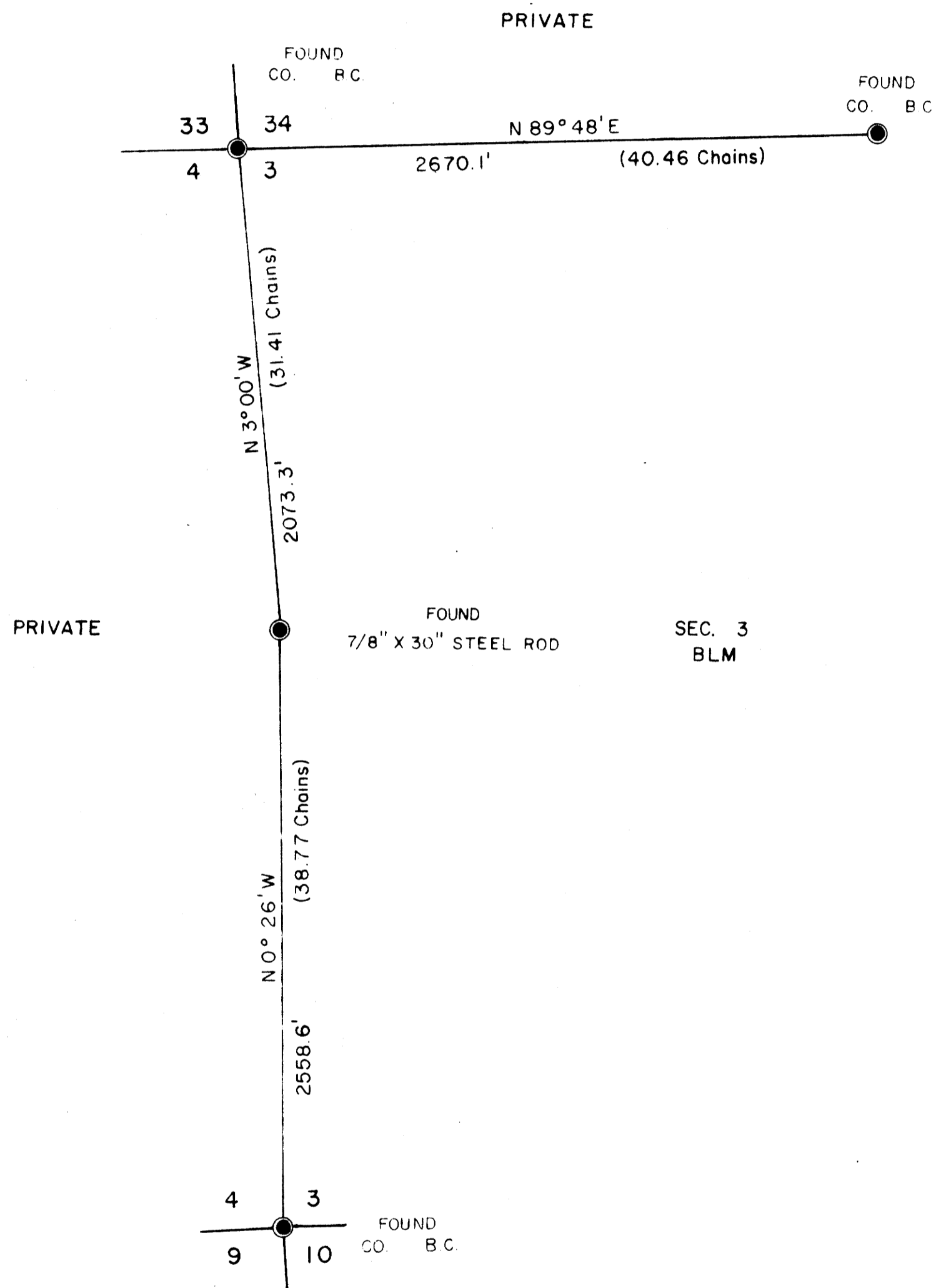
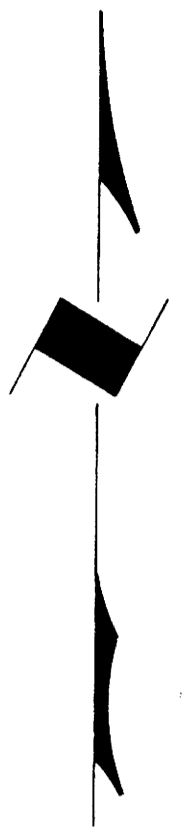
TOWNSHIP 31 SOUTH, RANGE 9 WEST, OF THE WILLAMETTE MERIDIAN, OREGON

ADMINISTRATIVE SURVEY

FILED *pk*
RECEIVED *pk*

NOV 26 1979

COUNTY SURVEYOR
DOUGLAS COUNTY, ORE.



THIS PLAT REPRESENTS AN ADMINISTRATIVE SURVEY OF T 31 S, R 9 W, SEC. 3, WILLAMETTE MERIDIAN. BEARINGS ARE DETERMINED BY DIRECT OBSERVATION OF THE SUN AND ALL B L M PROPERTY LINES ARE TAGGED.

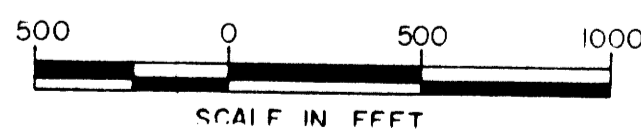
This reproduction made on an Oce' 7100. 10/15/93

COUNTY SURVEYORS FILE DATA
DO NOT REMOVE FROM OFFICE

UNAPPROVED
SUBJECT TO CHANGE

LEGEND

● CORNERS FOUND



U.S. BUREAU OF LAND MANAGEMENT
ROSEBURG DISTRICT OREGON
DRAWN BY PAUL BENTLEY DATE 1-2-79
SURVEYED BY ALEX THOMAS DATE JUNE 1978
APPROVED BY *James P. Chamberlain* DATE 7-2-79
DISTRICT ENGINEER

MAP FILE NBL-24

MAP FILE NBL-24