

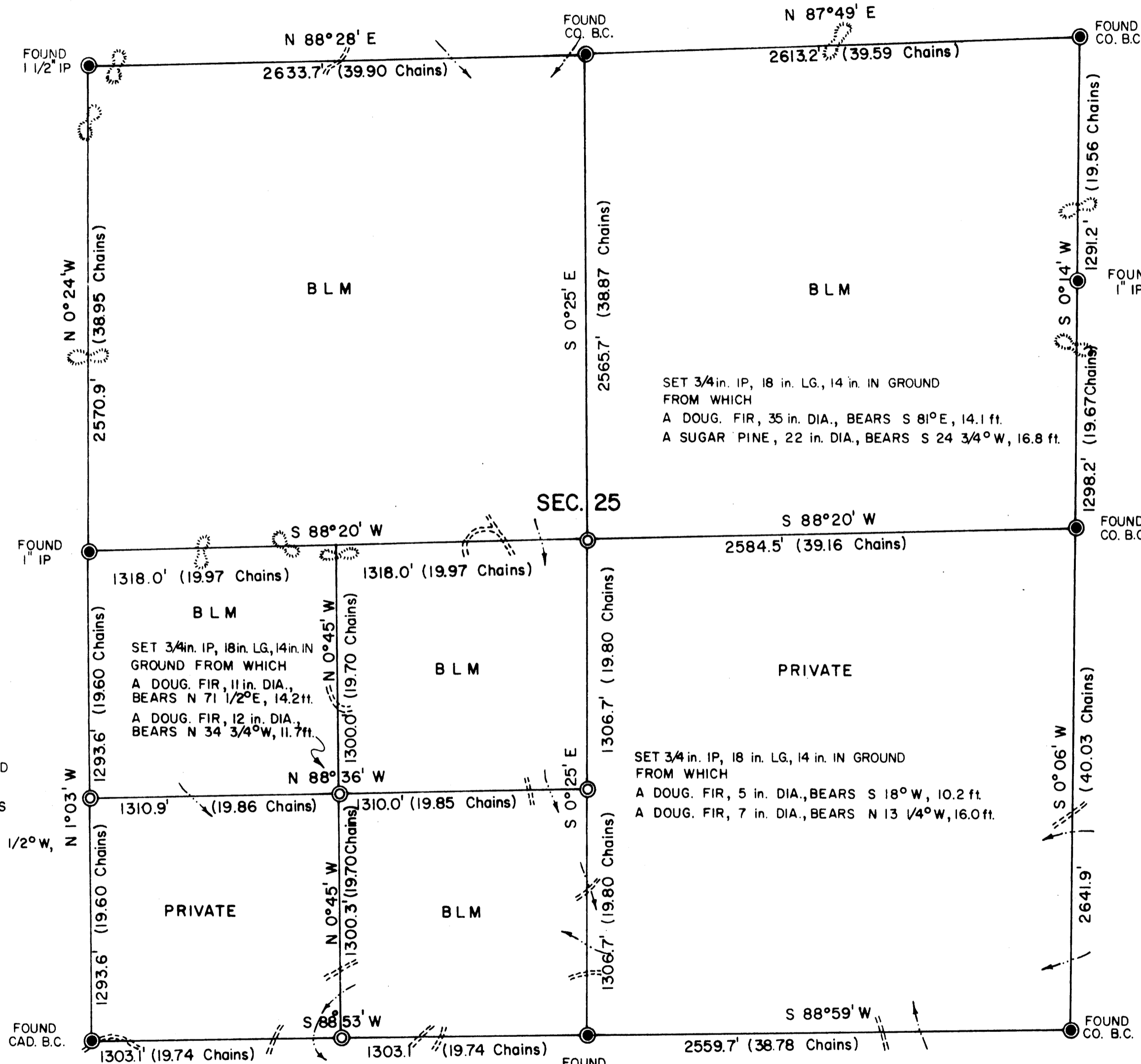
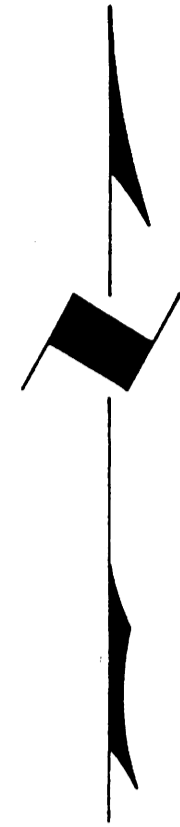
# TOWNSHIP 31 SOUTH, RANGE 7 WEST, OF THE WILLAMETTE MERIDIAN, OREGON

## ADMINISTRATIVE SURVEY

FILED *ok*  
RECEIVED *ok*

NOV 26 1979

COUNTY SURVEYOR  
DOUGLAS COUNTY, ORE.



THIS PLAT REPRESENTS AN ADMINISTRATIVE SURVEY OF T 31 S, R 7 W, SEC. 25, WILLAMETTE MERIDIAN. BEARINGS ARE DETERMINED BY DIRECT OBSERVATION OF THE SUN AND ALL BLM PROPERTY LINES ARE TAGGED. BEARING TREE DISTANCE IS TO FACE OF TREE.

This reproduction made on an Oce' 7100. 10/15/93

SET 3/4 in. IP, 18 in. LG, 14 in. IN GROUND FROM WHICH  
A PONDEROSA PINE, 45 in. DIA., BEARS N 51 1/4° E, 15.9 ft.  
A DOUG. FIR, 27 in. DIA., BEARS N 45 1/2° W, 5.2 ft.

SET 3/4 in. IP, 18 in. LG, 14 in. IN GROUND FROM WHICH  
A DOUG. FIR, 11 in. DIA., BEARS N 71 1/2° E, 14.2 ft.  
A DOUG. FIR, 12 in. DIA., BEARS N 34 3/4° W, 11.7 ft.

SET 3/4 in. IP, 18 in. LG, 14 in. IN GROUND FROM WHICH  
A DOUG. FIR, 5 in. DIA., BEARS S 18° W, 10.2 ft.  
A DOUG. FIR, 7 in. DIA., BEARS N 13 1/4° W, 16.0 ft.

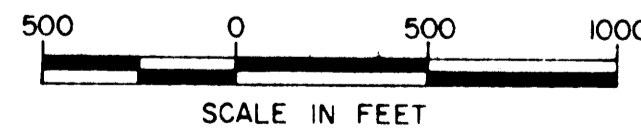
SET 3/4 in. IP, 18 in. LG, 14 in. IN GROUND FROM WHICH  
A DOUG. FIR, 18 in. DIA., BEARS N 28 1/4° E, 9.2 ft.  
A DOUG. FIR, 22 in. DIA., BEARS N 83 1/4° W, 2.4 ft.

**COUNTY SURVEYORS FILE DATA  
DO NOT REMOVE FROM OFFICE**

**UNAPPROVED  
PROJECT TO CHANGE**

### LEGEND

- CORNERS FOUND
- CORNERS SET
- INTERMITTENT STREAM
- ROAD
- RIDGE



U.S. BUREAU OF LAND MANAGEMENT

ROSEBURG DISTRICT OREGON

DRAWN BY KURT DONNELLY DATE 7-25-78

SURVEYED BY LEONARD HERZSTEIN DATE OCTOBER 1977

APPROVED BY *Paul P. Chambers* DATE 8-12-78  
DISTRICT ENGINEER

MAP FILE M81-23

MAP FILE M81-23