

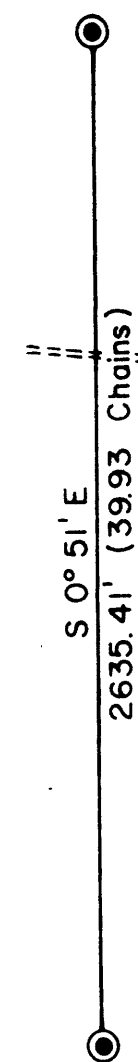
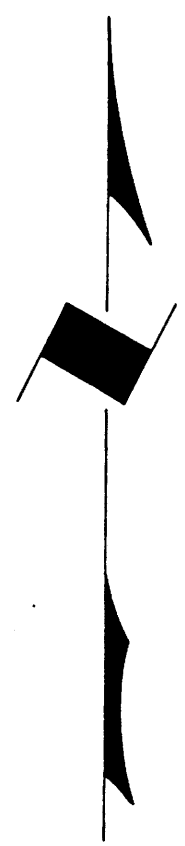
TOWNSHIP 31 SOUTH, RANGE 7 WEST, OF THE WILLAMETTE MERIDIAN, OREGON

ADMINISTRATIVE SURVEY

FILED *dh*
RECEIVED *dh*

NOV 26 1979

COUNTY SURVEYOR
DOUGLAS COUNTY, ORE.



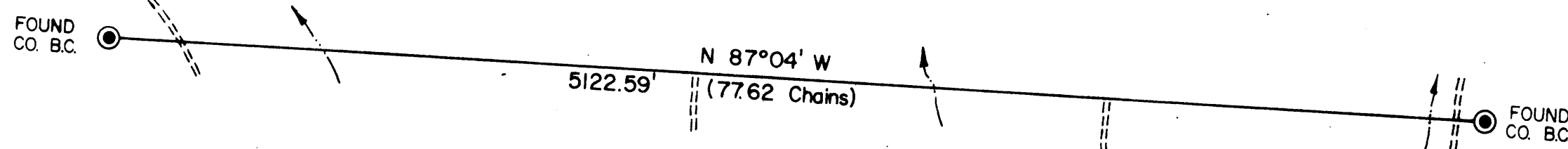
THIS PLAT REPRESENTS AN ADMINISTRATIVE SURVEY OF
T 31 S, R 7 W, SEC. 19, WILLAMETTE MERIDIAN. BEARINGS
ARE MAGNETIC. ALL B L M PROPERTY LINES ARE BLAZED
AND TAGGED.

This reproduction made on
an Oce' 7100. 10/15/93

SEC. 19

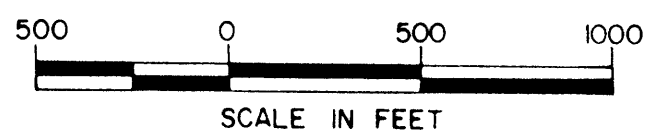
BLM

COUNTY SURVEYORS FILE DATA
DO NOT REMOVE FROM OFFICE



LEGEND

- CORNERS FOUND
- INTERMITTENT STREAM
- ROADS



UNAPPROVED
SUSCEPT TO CHANGE

U.S. BUREAU OF LAND MANAGEMENT

ROSEBURG DISTRICT OREGON

DRAWN BY KURT DONNELLY DATE 8-22-78

SURVEYED BY BOB GILSTER DATE AUGUST 1978

APPROVED BY *James O. Chamberlain* DATE 8-28-78
DISTRICT ENGINEER

MAP FILE M81-22

MAP FILE M81-22