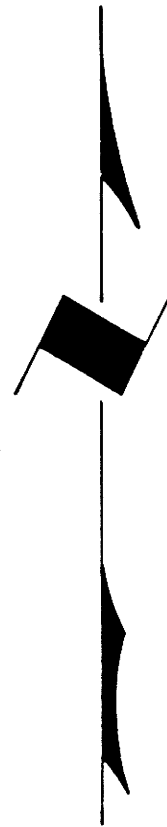


TOWNSHIP 31 SOUTH, RANGE 7 WEST, OF THE WILLAMETTE MERIDIAN, OREGON
 ADMINISTRATIVE SURVEY

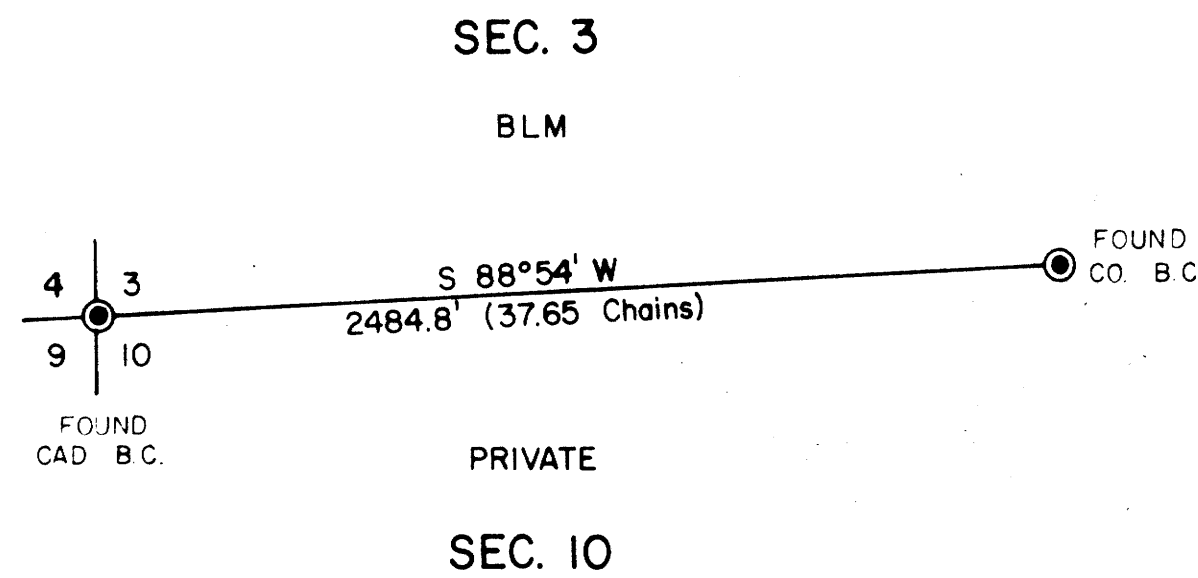
FILED *DR*
 RECEIVED *DR*
 NOV 26 1979
 COUNTY SURVEYOR
 DOUGLAS COUNTY, ORE.



THIS PLAT REPRESENTS AN ADMINISTRATIVE SURVEY OF
 T 31 S, R 7 W, SEC. 3 & 10, WILLAMETTE MERIDIAN. BEARINGS
 ARE DETERMINED BY DIRECT OBSERVATION OF THE SUN AND
 ALL BLM PROPERTY LINES ARE TAGGED.

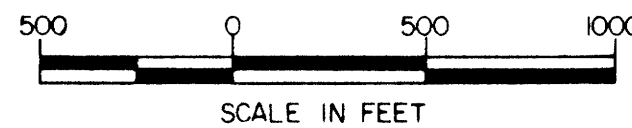
This reproduction made on
 an Oce' 7100. 10/15/93

**COUNTY SURVEYORS FILE DATA
 DO NOT REMOVE FROM OFFICE**



LEGEND

● CORNERS FOUND



**UNAPPROVED
 SUBJECT TO CHANGE**

U.S. BUREAU OF LAND MANAGEMENT
 ROSEBURG DISTRICT OREGON
 DRAWN BY KURT DONNELLY DATE 9-14-78
 SURVEYED BY ALEX TUPYI DATE JULY 1978
 APPROVED BY *Bruce P. Chamber* DATE SEPTEMBER 1978
 DISTRICT ENGINEER

MAP FILE: M81-21

MAP FILE: M81-21