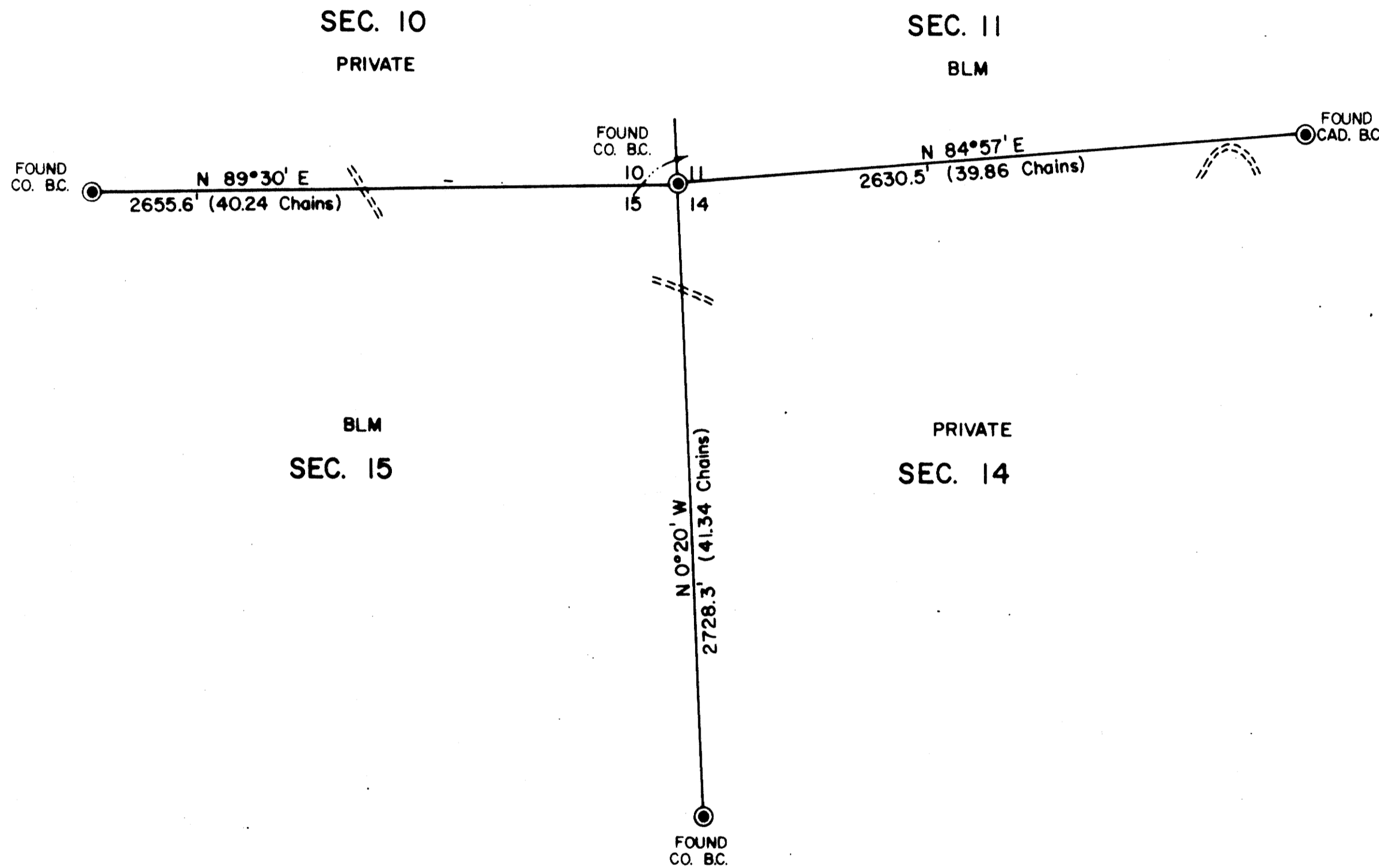
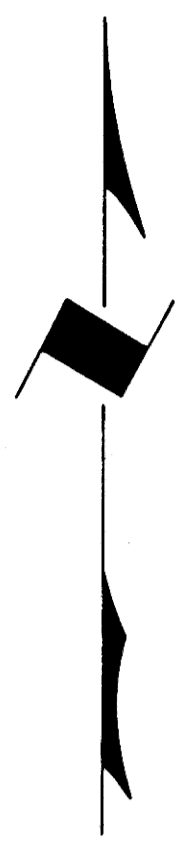


TOWNSHIP 31 SOUTH, RANGE 7 WEST, OF THE WILLAMETTE MERIDIAN, OREGON
ADMINISTRATIVE SURVEY

FILED *ph*
RECEIVED *ph*
NOV 26 1978
COUNTY SURVEYOR
DOUGLAS COUNTY, ORE.



THIS PLAT REPRESENTS AN ADMINISTRATIVE SURVEY OF
T 31 S, R 7 W, SEC. 10, 11, 14, & 15, WILLAMETTE MERIDIAN.
BEARINGS ARE DETERMINED BY DIRECT OBSERVATION OF
THE SUN AND ALL BLM PROPERTY LINES ARE TAGGED.

This reproduction made on
an Oce' 7100. 10/15/93

COUNTY SURVEYORS FILE DATA
DO NOT REMOVE FROM OFFICE

UNAPPROVED
SUBJECT TO CHANGE

LEGEND

- CORNERS FOUND
- INTERMITTENT STREAM
- ROADS



U.S. BUREAU OF LAND MANAGEMENT
ROSEBURG DISTRICT OREGON
DRAWN BY KURT DONNELLY DATE 9-13-78
SURVEYED BY ALEX TUPYI DATE MAY 1978
APPROVED BY *James P. Chamberlain* DATE SEPTEMBER 1978
DISTRICT ENGINEER

MAP FILE No. 1 - 20

MAP FILE No. 1 - 20