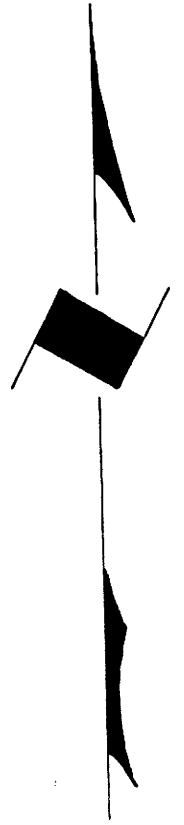


TOWNSHIP 28 SOUTH, RANGE 4 WEST, OF THE WILLAMETTE MERIDIAN, OREGON

ADMINISTRATIVE SURVEY

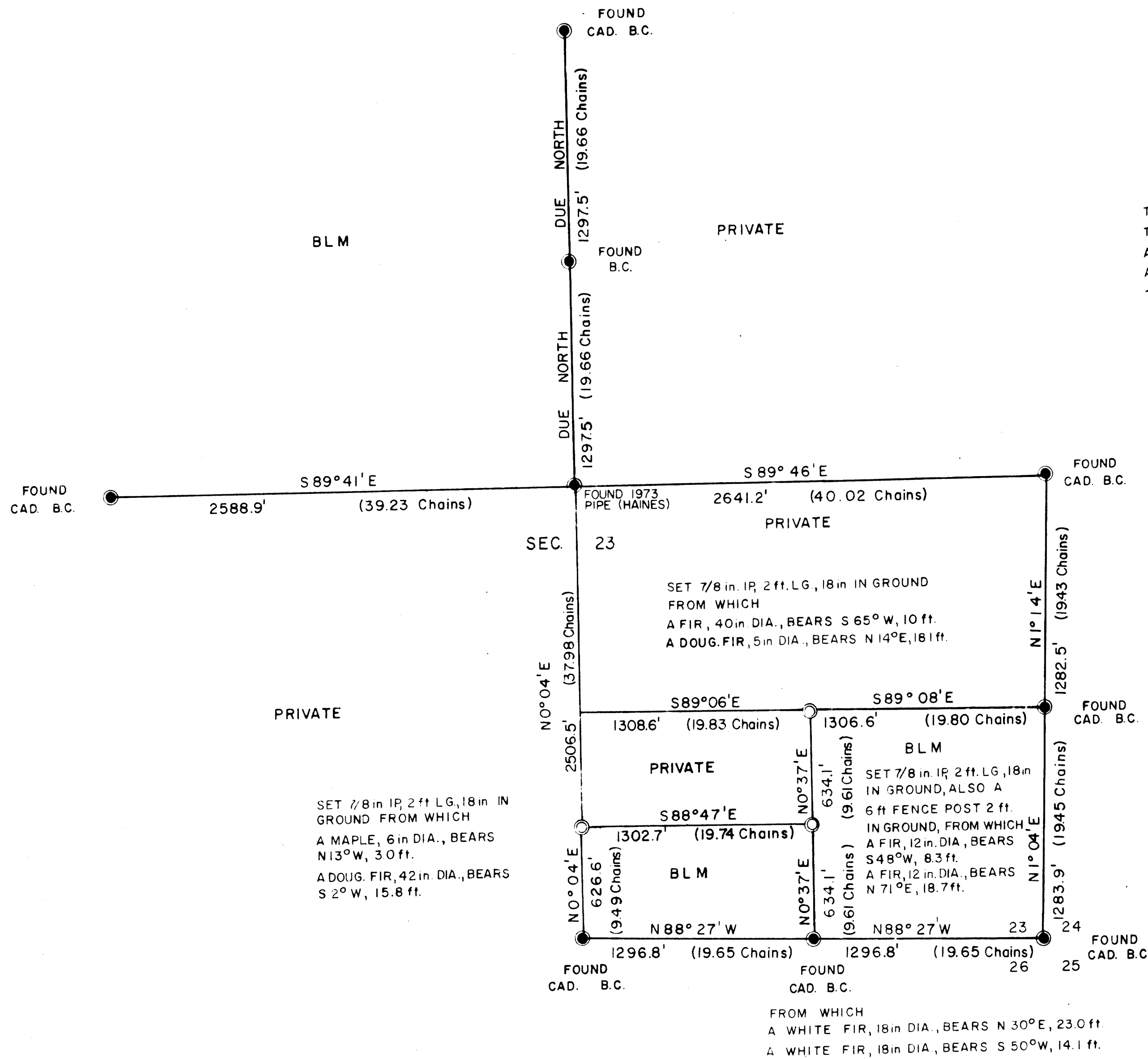
FILED &
RECEIVED *jh*
NOV 26 1979
COUNTY SURVEYOR
WAGGLAS COUNTY, ORE.
2



THIS PLAT REPRESENTS AN ADMINISTRATIVE SURVEY OF T28 S, R 4 W, SEC. 23, WILLAMETTE MERIDIAN. BEARINGS ARE DETERMINED BY DIRECT OBSERVATION OF THE SUN AND ALL BLM PROPERTY LINES ARE TAGGED. REFERENCE TREE DISTANCE IS TO FACE OF TREE.

**COUNTY SURVEYORS FILE THIS
DO NOT REMOVE FROM OFFICE**

This reproduction made on
an Oce' 7100. 10/15/93



LEGEND

- CORNERS FOUND
- CORNERS SET



U.S. BUREAU OF LAND MANAGEMENT
ROSEBURG DISTRICT OREGON
DRAWN BY PAUL BENTLEY DATE 11-7-78
SURVEYED BY ALEX TUPYI DATE SEPTEMBER 1978
APPROVED BY *Bruce P. Chamber* DATE 7-2-79
DISTRICT ENGINEER

MAP FILE MB1-2

MAP FILE MB1-2