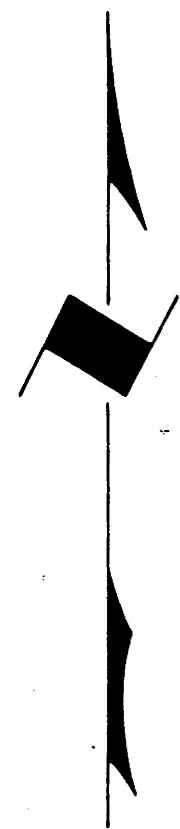


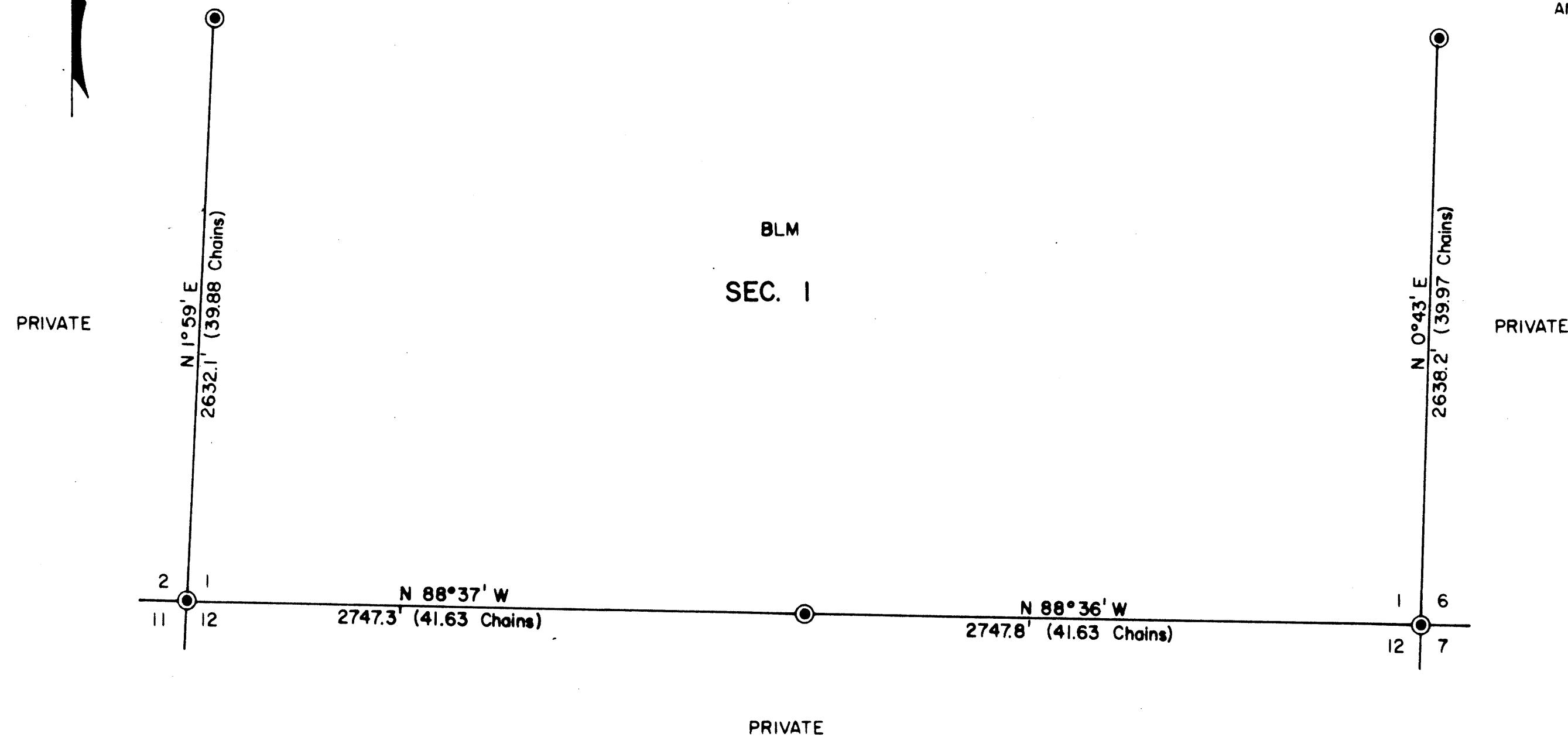
TOWNSHIP 31 SOUTH, RANGE 7 WEST, OF THE WILLAMETTE MERIDIAN, OREGON

ADMINISTRATIVE SURVEY

FILED *Q*
RECEIVED *JK*
NOV 26 1979
COUNTY SURVEYOR
COOS COUNTY, ORE



THIS PLAT REPRESENTS AN ADMINISTRATIVE SURVEY OF T 31 S, R 7 W, SEC. 1, WILLAMETTE MERIDIAN. BEARINGS ARE DETERMINED BY DIRECT OBSERVATION OF THE SUN AND ALL BLM PROPERTY LINES ARE TAGGED.

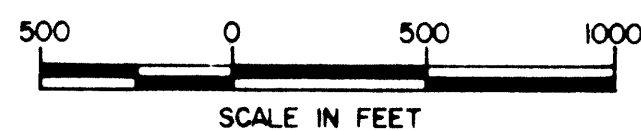


This reproduction made on an Oce' 7100. 10/15/93

COUNTY SURVEYORS FILE DATA
DO NOT REMOVE FROM OFFICE

LEGEND

● CORNERS FOUND—ALL CADASTRAL BRASS CAPS



UNAPPROVED
SUBJECT TO CHANGE

U.S. BUREAU OF LAND MANAGEMENT
ROSEBURG DISTRICT OREGON
DRAWN BY KURT DONNELLY DATE 9-14-78
SURVEYED BY ALEX TUPYI DATE JULY 1978
APPROVED BY *James P. Chamber* DATE SEPTEMBER 1978
DISTRICT ENGINEER

MAP FILE *MBL-19*

MAP FILE *MBL-19*