

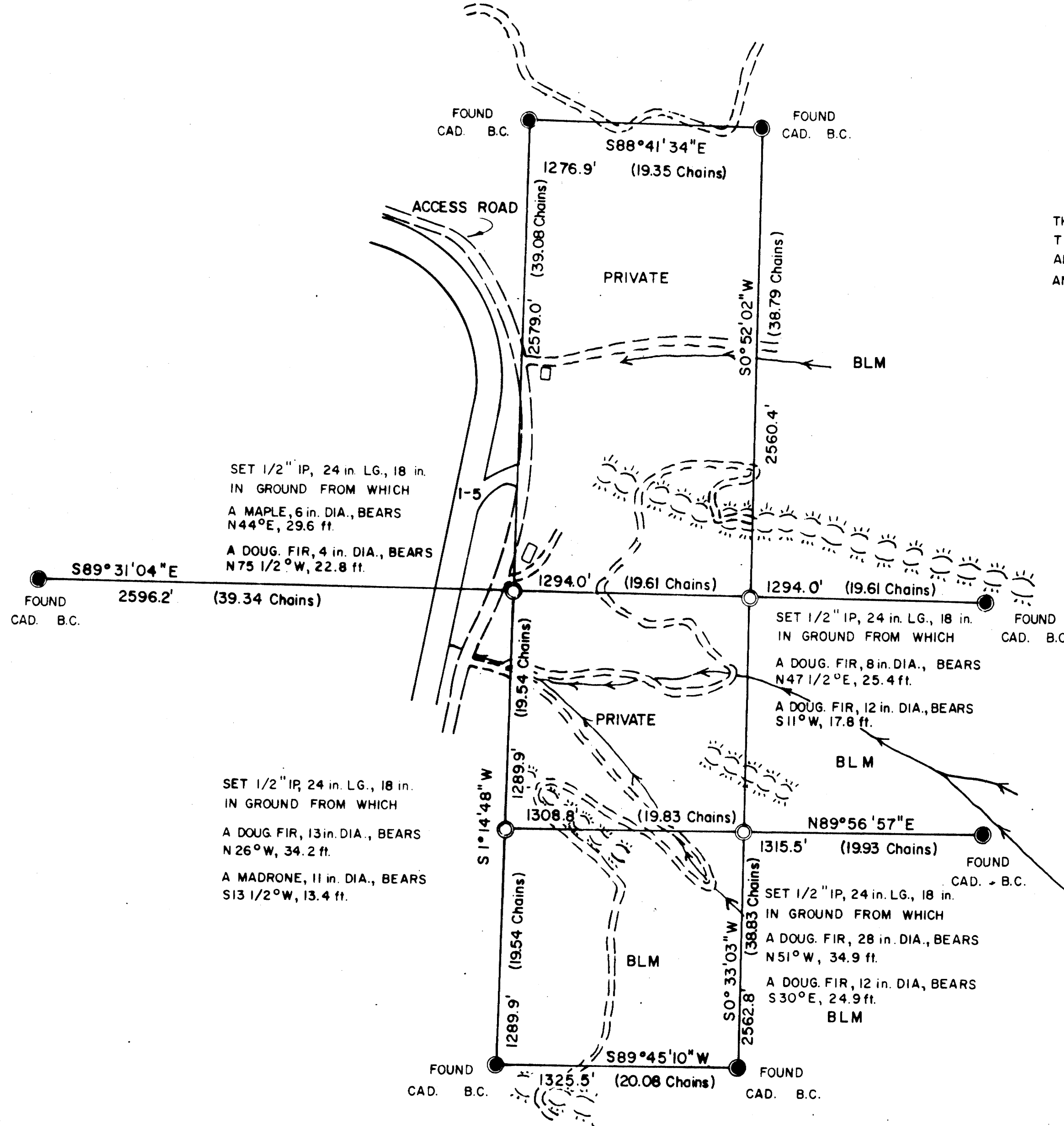
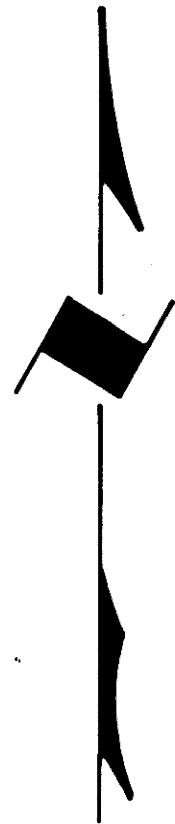
TOWNSHIP 31 SOUTH, RANGE 5 WEST, OF THE WILLAMETTE MERIDIAN, OREGON

ADMINISTRATIVE SURVEY

FILED *dh*  
RECEIVED *dh*

NOV 26 1979

COUNTY SURVEYOR  
DOUGLAS COUNTY, ORE.



THIS PLAT REPRESENTS AN ADMINISTRATIVE SURVEY OF T 31 S, R5W, SEC. 12, WILLAMETTE MERIDIAN. BEARINGS ARE DETERMINED BY DIRECT OBSERVATION OF THE SUN AND ALL BLM PROPERTY LINES ARE TAGGED.

This reproduction made on an Oce' 7100. 10/15/93

COUNTY SURVEYORS FILE DATA  
DO NOT REMOVE FROM OFFICE

LEGEND

- CORNERS FOUND
- CORNERS SET
- ~ CREEKS
- == ROADS
- ⌘ RIDGES



**UNAPPROVED**  
**SUBJECT TO CHANGE**

U.S. BUREAU OF LAND MANAGEMENT  
ROSEBURG DISTRICT OREGON  
DRAWN BY PAUL BENTLEY DATE 6-6-79  
SURVEYED BY WILLIAM R. MAY DATE APRIL 1979  
APPROVED BY *Bruce P. Chamber* DATE 7-2-79  
DISTRICT ENGINEER