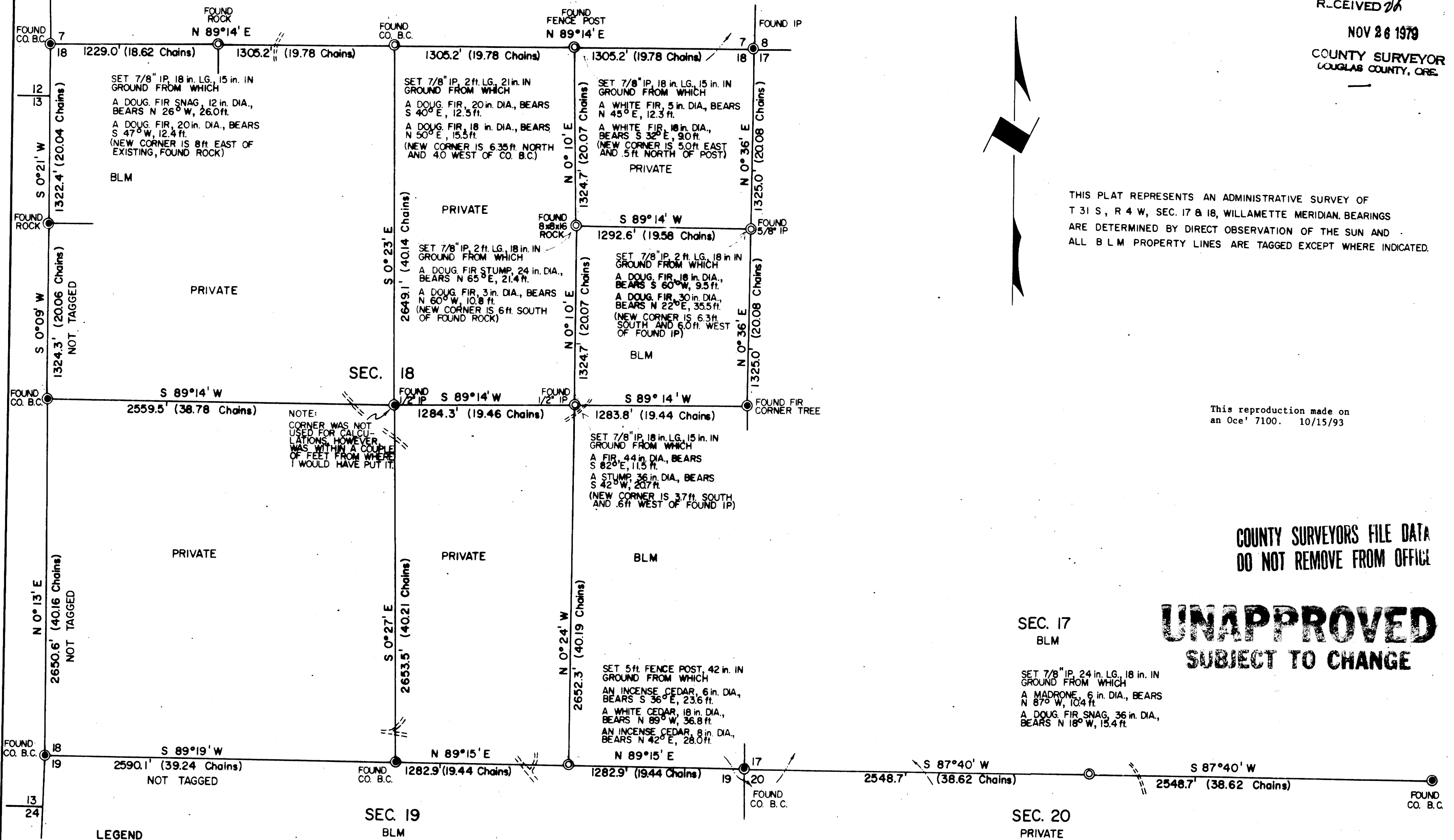


TOWNSHIP 31 SOUTH, RANGE 4 WEST, OF THE WILLAMETTE MERIDIAN, OREGON

ADMINISTRATIVE SURVEY

FILED &  
R-CEIVED *th*  
NOV 26 1979  
COUNTY SURVEYOR  
DOUGLAS COUNTY, ORE.



THIS PLAT REPRESENTS AN ADMINISTRATIVE SURVEY OF T 31 S, R 4 W, SEC. 17 & 18, WILLAMETTE MERIDIAN. BEARINGS ARE DETERMINED BY DIRECT OBSERVATION OF THE SUN AND ALL BLM PROPERTY LINES ARE TAGGED EXCEPT WHERE INDICATED.

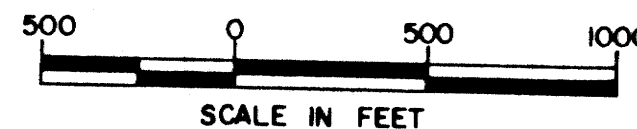
This reproduction made on an Oce' 7100. 10/15/93

COUNTY SURVEYORS FILE DATA  
DO NOT REMOVE FROM OFFICE

**UNAPPROVED**  
SUBJECT TO CHANGE

LEGEND

- CORNERS FOUND
- CORNERS SET
- INTERMITTENT STREAM
- - - DIRT ROAD



U.S. BUREAU OF LAND MANAGEMENT  
ROSEBURG DISTRICT OREGON  
DRAWN BY KURT DONNELLY DATE 6-27-79  
SURVEYED BY ALEX TUPYI DATE OCTOBER 1977  
APPROVED BY *Peter P. Chamber* DATE 7-19-79  
DISTRICT ENGINEER

MAP FILE: MBL-17

MAP FILE: MBL-17