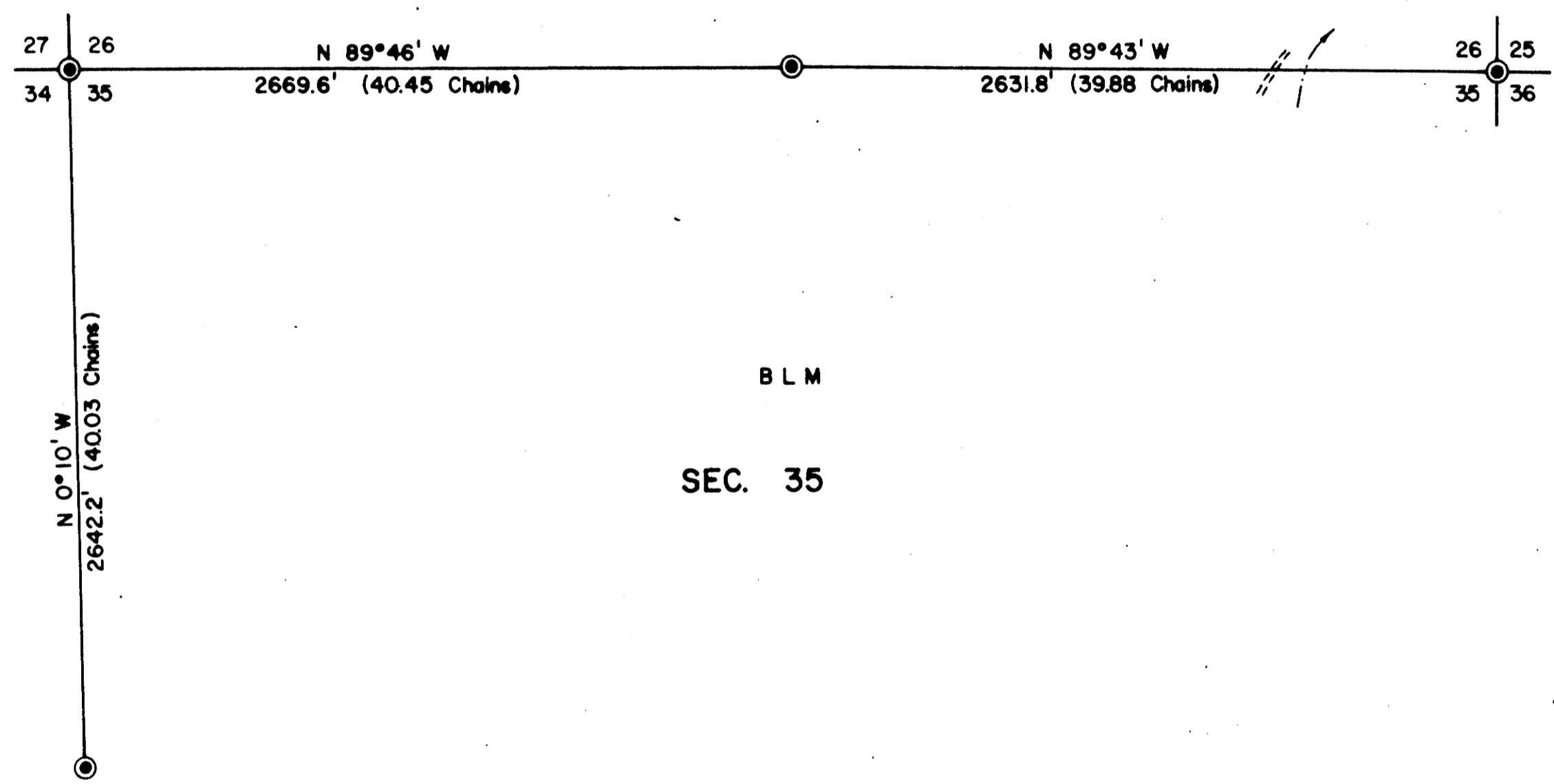


TOWNSHIP 30 SOUTH, RANGE 9 WEST, OF THE WILLAMETTE MERIDIAN, OREGON
 ADMINISTRATIVE SURVEY

FILED *th*
 RECEIVED *th*
 NOV 26 1978
 COUNTY SURVEYOR
 CLATSOP COUNTY, ORE.

THIS PLAT REPRESENTS AN ADMINISTRATIVE SURVEY OF
 T 30 S, R 9 W, SEC. 35, WILLAMETTE MERIDIAN. BEARINGS
 ARE DETERMINED BY DIRECT OBSERVATION OF THE SUN
 AND ALL BLM PROPERTY LINES ARE TAGGED.



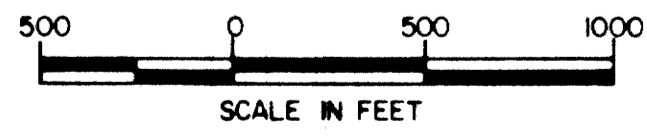
BLM
 SEC. 35

This reproduction made on
 an Oce' 7100. 10/15/93

COUNTY SURVEYORS FILE DATA
 DO NOT REMOVE FROM OFFICE

LEGEND

- CORNERS FOUND-ALL COUNTY BRASS CAPS
- INTERMITTENT STREAM
- ROADS



UNAPPROVED
SUBJECT TO CHANGE

U.S. BUREAU OF LAND MANAGEMENT
 ROSEBURG DISTRICT OREGON
 DRAWN BY KURT DONNELLY DATE 9-13-78
 SURVEYED BY ALEX TUPYI DATE JUNE 1978
 APPROVED BY *James P. Chamberlain* DATE 9-15-78
 DISTRICT ENGINEER

MAP FILE M81-16

MAP FILE M81-16