

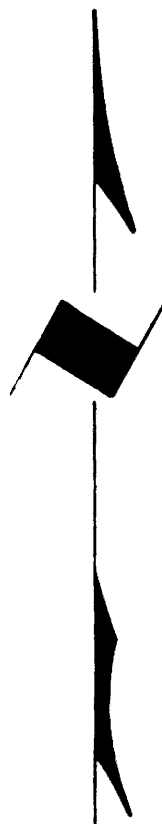
TOWNSHIP 30 SOUTH, RANGE 4 WEST, OF THE WILLAMETTE MERIDIAN, OREGON

ADMINISTRATIVE SURVEY

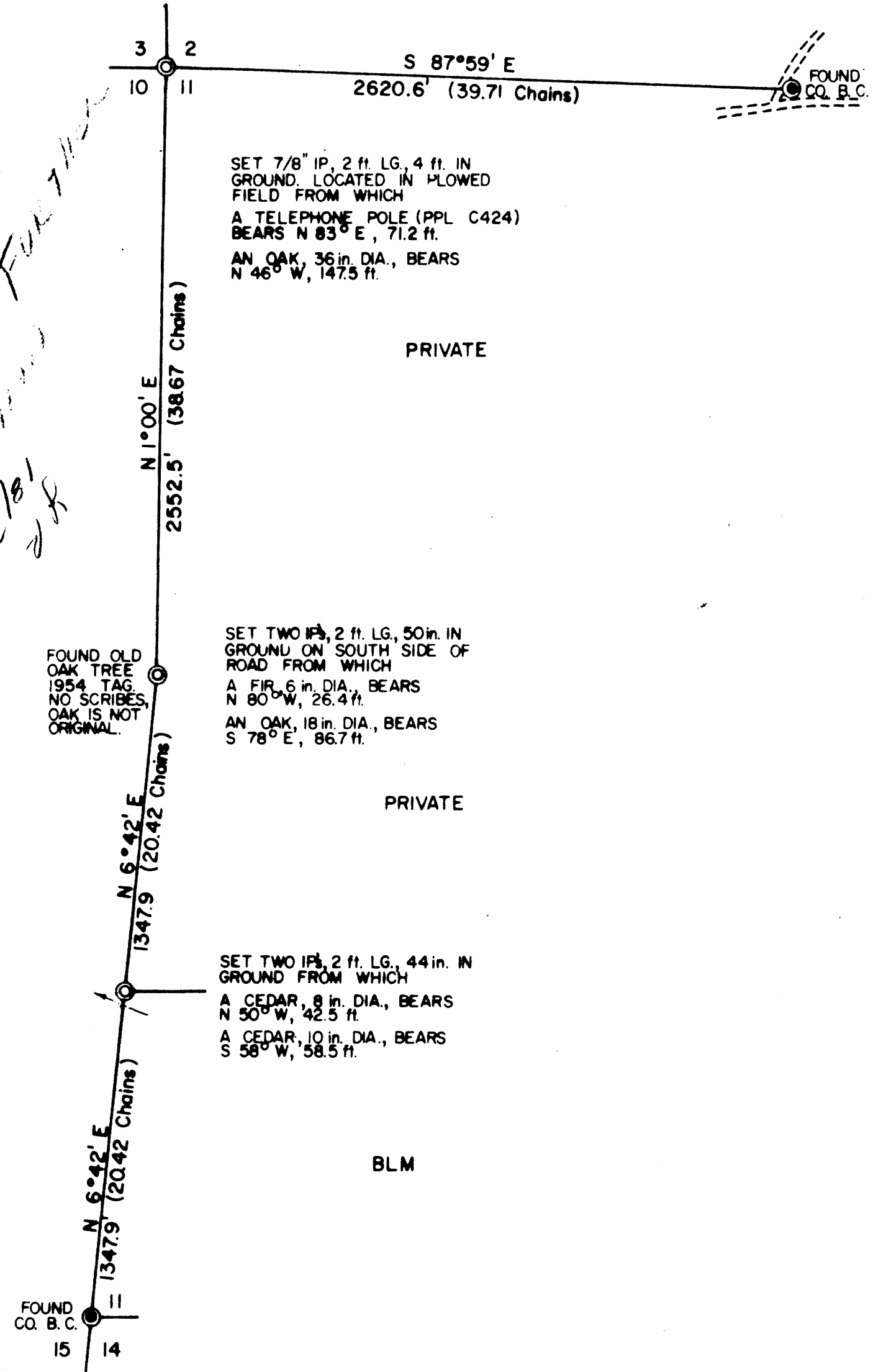
FILED &  
RECEIVED *dh*

NOV 26 1978

COUNTY SURVEYOR  
WAGGLAS COUNTY, ORE.



*SURVEY BEING  
REVIEWED BY  
D.L.M. FOR  
INTERMITTENT  
11/2/81  
dh*



THIS PLAT REPRESENTS AN ADMINISTRATIVE SURVEY OF T 30 S, R 4 W, SEC. 11, WILLAMETTE MERIDIAN. BEARINGS ARE DETERMINED BY DIRECT OBSERVATION OF THE SUN AND ALL BLM PROPERTY LINES ARE TAGGED. REFERENCE TREE DISTANCE IS TO FACE OF TREE.

This reproduction made on an Oce' 7100. 10/15/93

**COUNTY SURVEYORS FILE DATA  
DO NOT REMOVE FROM OFFICE**

LEGEND

- CORNERS FOUND
- CORNERS SET
- - - DIRT ROAD
- ~ INTERMITTENT STREAM



**UNAPPROVED  
SUBJECT TO CHANGE**

U.S. BUREAU OF LAND MANAGEMENT  
ROSEBURG DISTRICT OREGON  
DRAWN BY K.D. & P.B. DATE 6-29-79  
SURVEYED BY ALEX TUPYI DATE NOV. 1978  
APPROVED BY *D. P. Chamberlain* DATE 7-19-79  
DISTRICT ENGINEER

MAP FILE MB1-15

MAP FILE MB1-15