

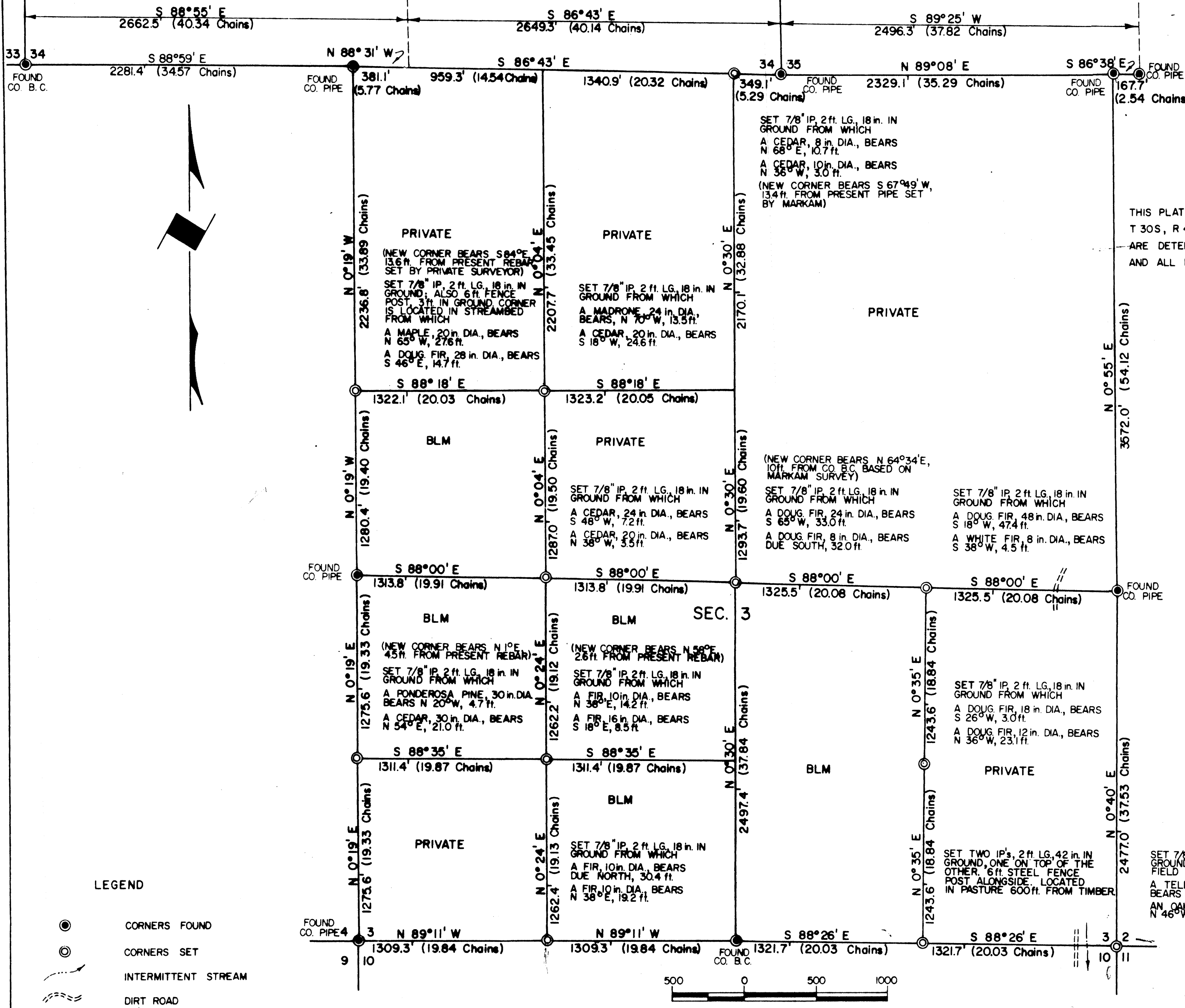
TOWNSHIP 30 SOUTH, RANGE 4 WEST, OF THE WILLAMETTE MERIDIAN, OREGON

ADMINISTRATIVE SURVEY

FILED &
RECEIVED

NOV 26 1979

COUNTY SURVEYOR
CLUGLAS COUNTY, ORE.



THIS PLAT REPRESENTS AN ADMINISTRATIVE SURVEY OF T 30S, R 4 W, SEC. 3, WILLAMETTE MERIDIAN. BEARINGS ARE DETERMINED BY DIRECT OBSERVATION OF THE SUN AND ALL BLM PROPERTY LINES ARE TAGGED.

This reproduction made on an Oce' 7100. 10/15/93

COUNTY SURVEYORS FILE DATA
DO NOT REMOVE FROM OFFICE

UNAPPROVED
SUBJECT TO CHANGE

SURVEY BEING REVISED - SEE B.L.M. FOR FURTHER INFORMATION. 11/15/81 d.R.

LEGEND

- CORNERS FOUND
- CORNERS SET
- ~ INTERMITTENT STREAM
- - - DIRT ROAD



U.S. BUREAU OF LAND MANAGEMENT
ROSEBURG DISTRICT OREGON
DRAWN BY KURT DONNELLY DATE 6-28-79
SURVEYED BY ALEX TUPYI DATE OCT. 1978
APPROVED BY *Bruce P. Chamberlain* DATE 7-19-79
DISTRICT ENGINEER

MAP FILE MBL-17

MAP FILE MBL-17