

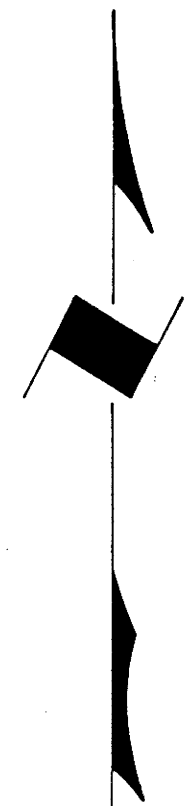
TOWNSHIP 29 SOUTH, RANGE 9 WEST, OF THE WILLAMETTE MERIDIAN, OREGON

ADMINISTRATIVE SURVEY

FILED *th*
RECEIVED *th*

NOV 26 1979

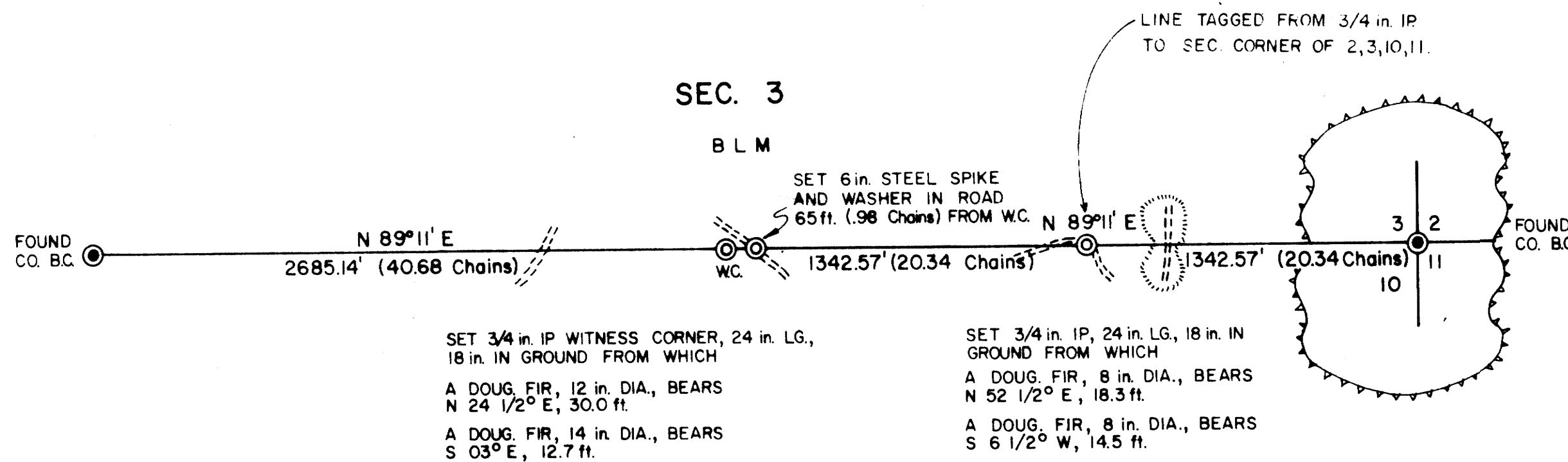
COUNTY SURVEYOR
DOUGLAS COUNTY, ORE.



THIS PLAT REPRESENTS AN ADMINISTRATIVE SURVEY OF T 29 S, R 9 W, SEC. 3, WILLAMETTE MERIDIAN. BEARINGS ARE DETERMINED BY DIRECT OBSERVATION OF THE SUN AND BLM PROPERTY LINES ARE BLAZED AND TAGGED AS NOTED.

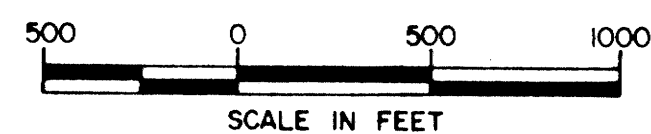
This reproduction made on an Oce' 7100. 10/15/93

COUNTY SURVEYORS FILE DATA
DO NOT REMOVE FROM OFFICE



LEGEND

- CORNERS FOUND
- CORNERS SET
- ⋯ RIDGE
- - - ROADS
- ⚡ BLUFF



UNAPPROVED
SUBJECT TO CHANGE

U.S. BUREAU OF LAND MANAGEMENT
ROSEBURG DISTRICT OREGON
DRAWN BY KURT DONNELLY DATE 8-2-78
SURVEYED BY FLOYD MEYER DATE JUNE 1978
APPROVED BY *James P. Chamber* DATE 8-28-78
DISTRICT ENGINEER

MAP FILE M81-13

MAP FILE M81-13