

TOWNSHIP 29 SOUTH, RANGE 9 WEST, OF THE WILLAMETTE MERIDIAN, OREGON

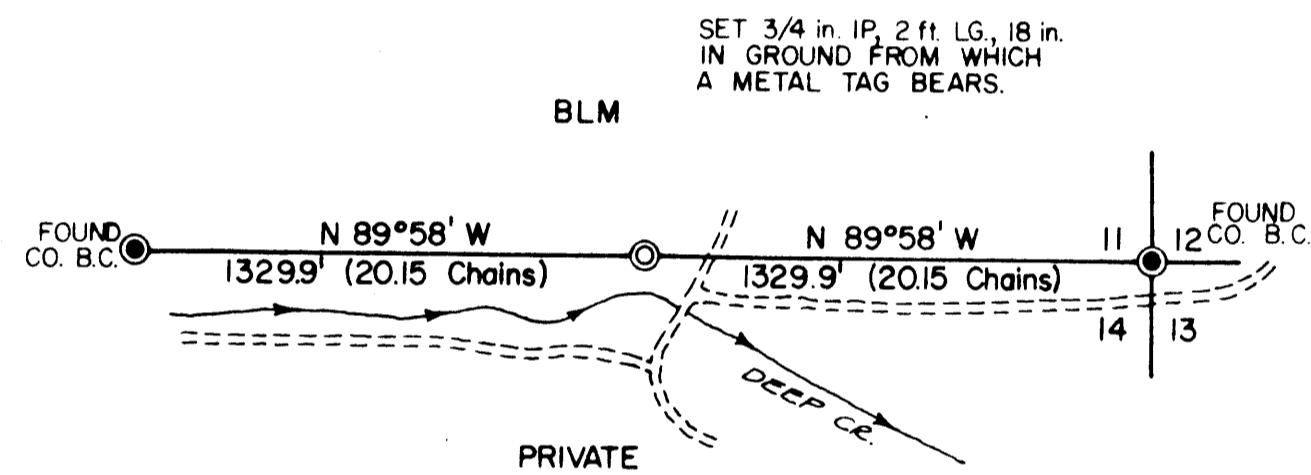
ADMINISTRATIVE SURVEY

FILED *R*  
RECEIVED *R*

NOV 26 1979

COUNTY SURVEYOR  
WUJGLAS COUNTY, ORE.

THIS PLAT REPRESENTS AN ADMINISTRATIVE SURVEY OF  
T 29 S, R 9 W, SEC. 11, WILLAMETTE MERIDIAN. BEARINGS  
ARE DETERMINED BY DIRECT OBSERVATION OF THE SUN  
AND ALL BLM PROPERTY LINES ARE TAGGED.

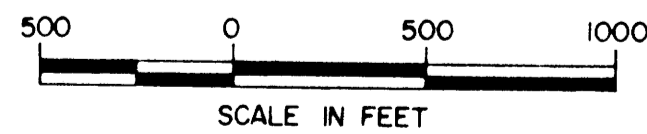


This reproduction made on  
an Oce' 7100. 10/15/93

COUNTY SURVEYORS FILE DATA  
DO NOT REMOVE FROM OFFICE

LEGEND

- CORNERS FOUND
- CORNERS SET
- ~ STREAM
- - - DIRT ROAD



U.S. BUREAU OF LAND MANAGEMENT

ROSEBURG DISTRICT OREGON

DRAWN BY KURT DONNELLY DATE 6-27-79

SURVEYED BY FLOYD MEYER DATE 1-17-78

APPROVED BY \_\_\_\_\_ DATE

DISTRICT ENGINEER

MAP FILE MBL-12

MAP FILE MBL-12