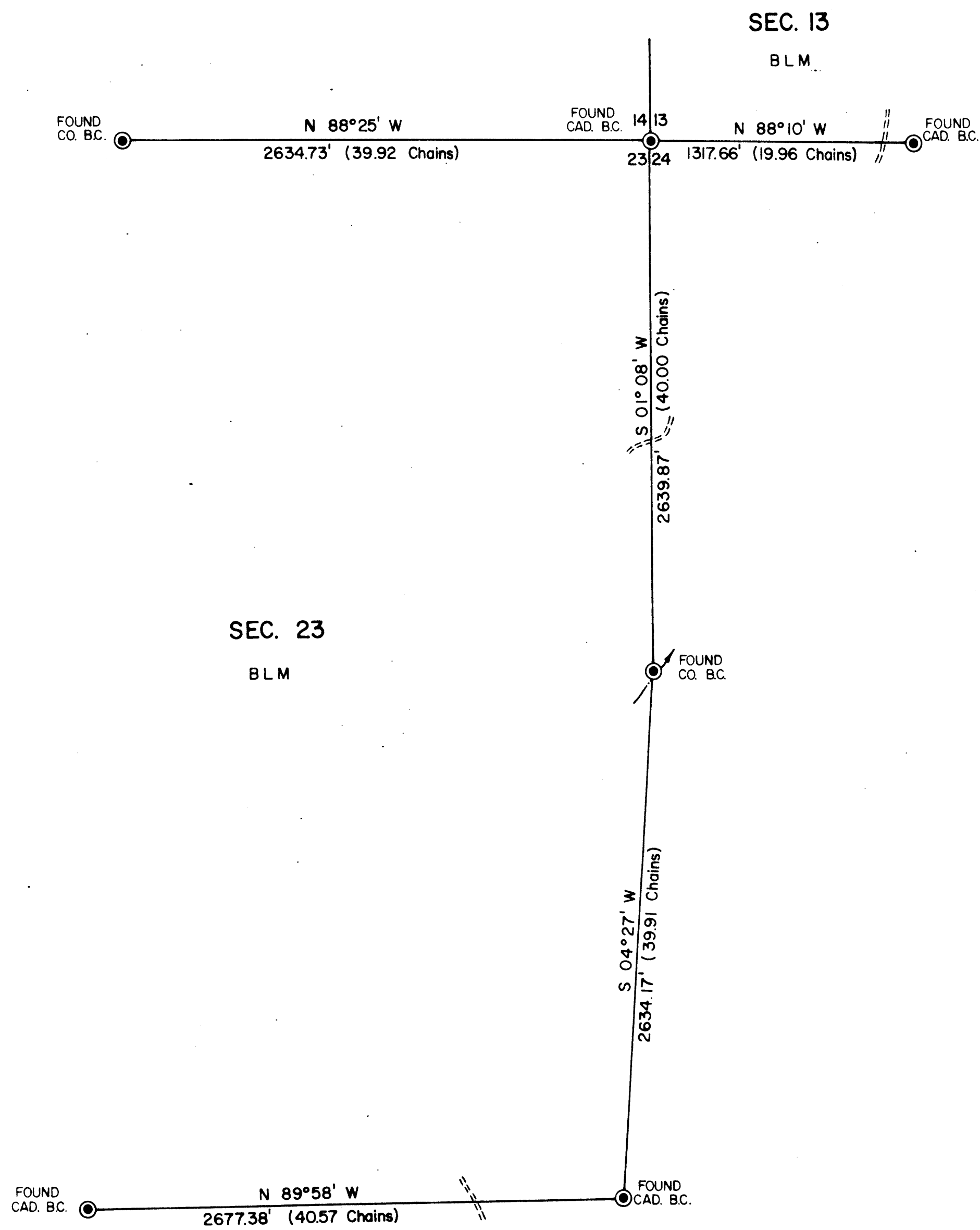


TOWNSHIP 29 SOUTH, RANGE 8 WEST, OF THE WILLAMETTE MERIDIAN, OREGON  
ADMINISTRATIVE SURVEY

FILED &  
RECEIVED *sh*  
NOV 26 1979  
COUNTY SURVEYOR  
WUJGLAS COUNTY, ORE.

MAP FILE MB1-11



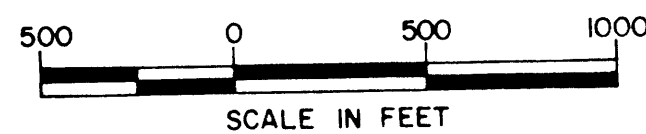
THIS PLAT REPRESENTS AN ADMINISTRATIVE SURVEY OF T 29 S, R 8 W, SEC. 13 & 23, WILLAMETTE MERIDIAN. BEARINGS ARE MAGNETIC. ALL B L M PROPERTY LINES ARE BLAZED AND TAGGED.

This reproduction made on an Oce' 7100. 10/15/93

COUNTY SURVEYOR'S DATA  
DO NOT RESOLVE FROM BLM

LEGEND

- CORNERS FOUND
- INTERMITTENT STREAM
- ROADS



U.S. BUREAU OF LAND MANAGEMENT  
ROSEBURG DISTRICT OREGON  
DRAWN BY KURT DONNELLY DATE 8-21-78  
SURVEYED BY BOB GILSTER DATE AUGUST 1978  
APPROVED BY *Steve P. Chamberlain* DATE 8-28-78  
DISTRICT ENGINEER

MAP FILE MB1-11