

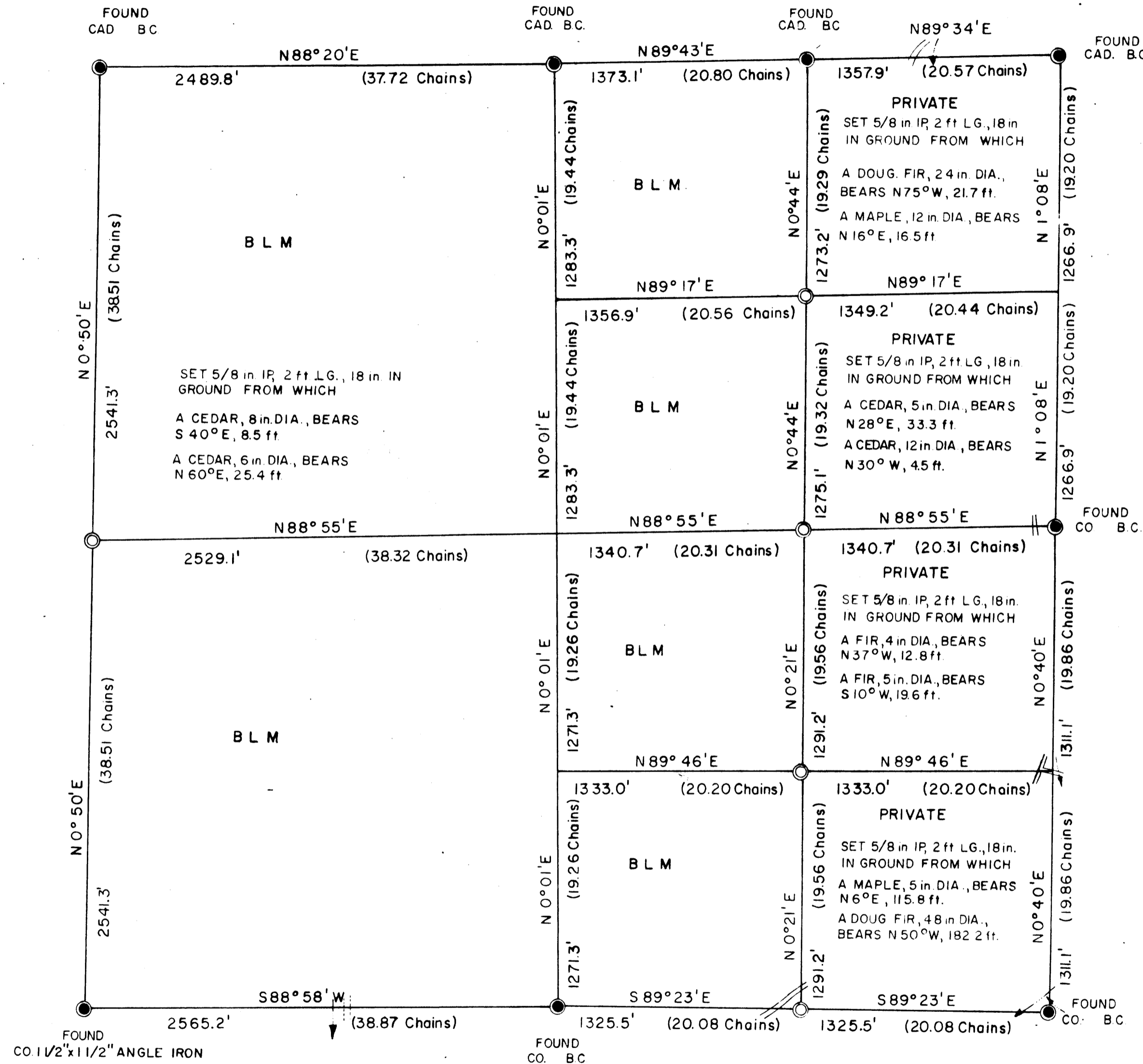
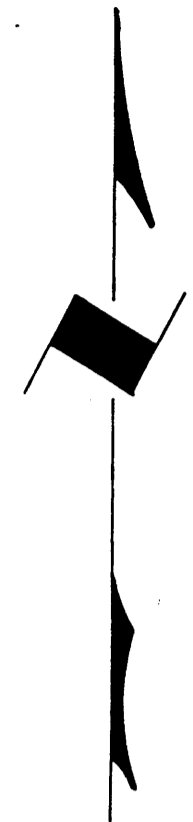
# TOWNSHIP 28 SOUTH, RANGE 4 WEST, OF THE WILLAMETTE MERIDIAN, OREGON

## ADMINISTRATIVE SURVEY

FILED *dh*  
RECEIVED *dh*

NOV 26 1979

COUNTY SURVEYOR  
WAGLAS COUNTY, ORE.



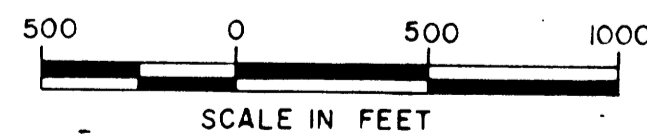
THIS PLAT REPRESENTS AN ADMINISTRATIVE SURVEY OF T 28 S, R 4 W, SEC. 33, WILLAMETTE MERIDIAN. BEARINGS ARE DETERMINED BY DIRECT OBSERVATION OF THE SUN AND ALL BLM PROPERTY LINES ARE TAGGED. REFERENCE TREE DISTANCE IS TO FACE OF TREE.

**COUNTY SURVEYORS FILE DATA  
DO NOT REMOVE FROM OFFICE**

This reproduction made on  
an Oce' 7100. 10/15/93

### LEGEND

- CORNERS FOUND
- CORNERS SET
- INTERMITTENT STREAM
- - - DIRT ROAD



U.S. BUREAU OF LAND MANAGEMENT

ROSEBURG DISTRICT

OREGON

DRAWN BY PAUL BENTLEY

DATE 11-9-78

SURVEYED BY ALEX TUPYI

DATE SEPTEMBER 1978

APPROVED BY *Bruce P. Chamber* DATE 7-2-79  
DISTRICT ENGINEER

MAP FILE M81-1

MAP FILE M81-1