

TOWNSHIP 26 SOUTH, RANGE 7 WEST, OF THE WILLAMETTE MERIDIAN, OREGON

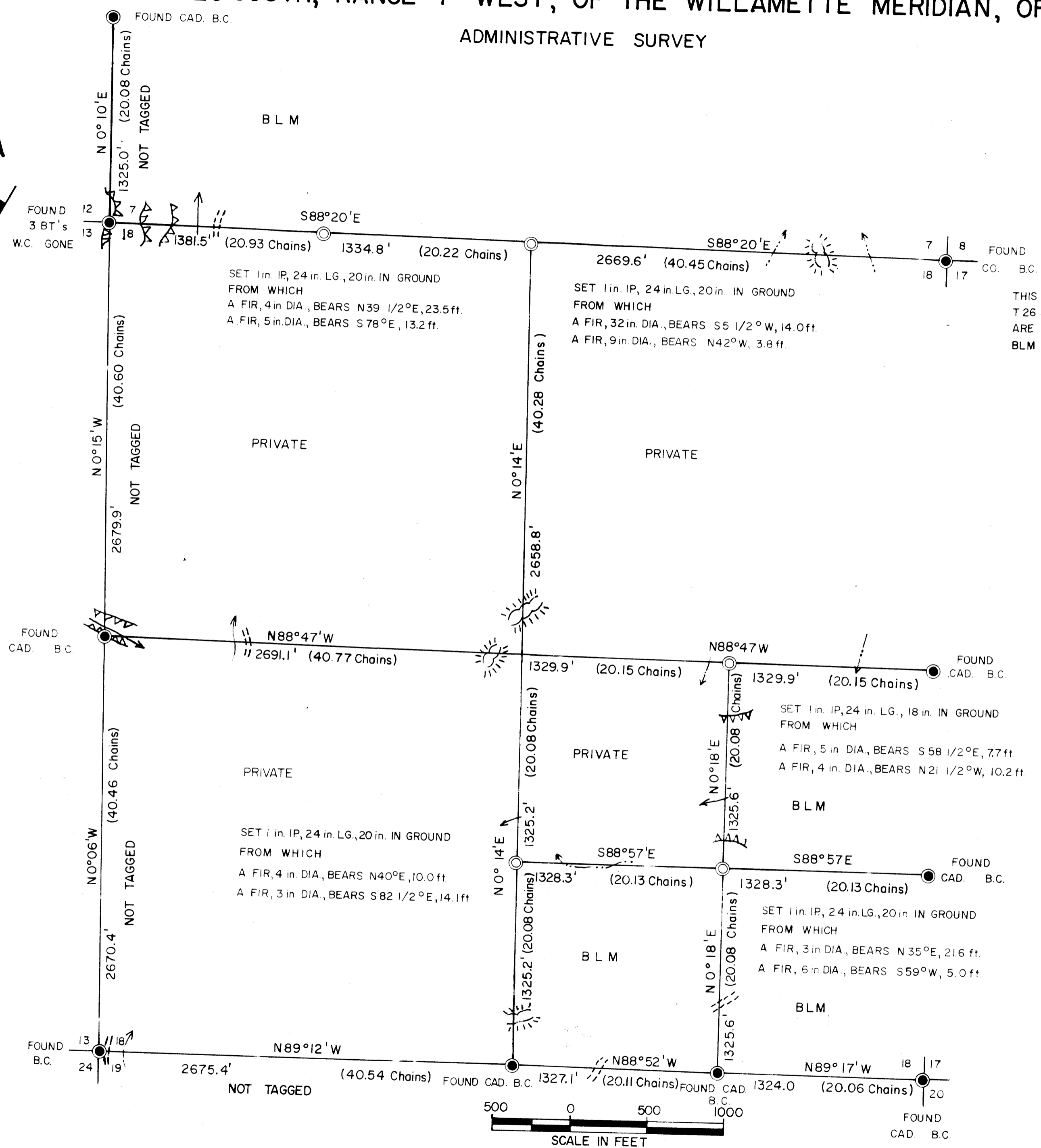
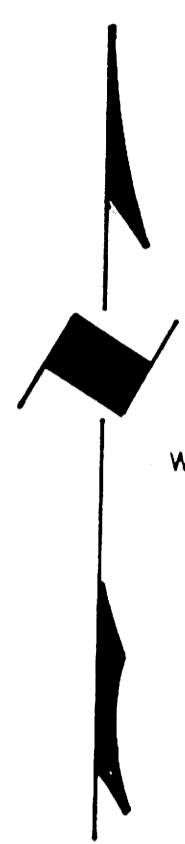
ADMINISTRATIVE SURVEY

FILED *th*
RECEIVED *th*

NOV 26 1979

COUNTY SURVEYOR
DOUGLAS COUNTY, ORE.

MAP FILE 1280-80



COUNTY SURVEYORS FILE DATA
DO NOT REMOVE FROM OFFICE

LEGEND

- CORNERS FOUND
- CORNERS SET
- ROADS
- ~ CREEK
- ~ INTERMITTENT STREAM
- ~ RIDGES
- ~ BLUFFS

U.S. BUREAU OF LAND MANAGEMENT
ROSEBURG DISTRICT OREGON
DRAWN BY PAUL BENTLEY DATE 5-17-79
SURVEYED BY LEONARD HERESTEIN DATE DECEMBER 1978
APPROVED BY *George P. Chamber* DATE 7-2-79
DISTRICT ENGINEER

MAP FILE 1280-80