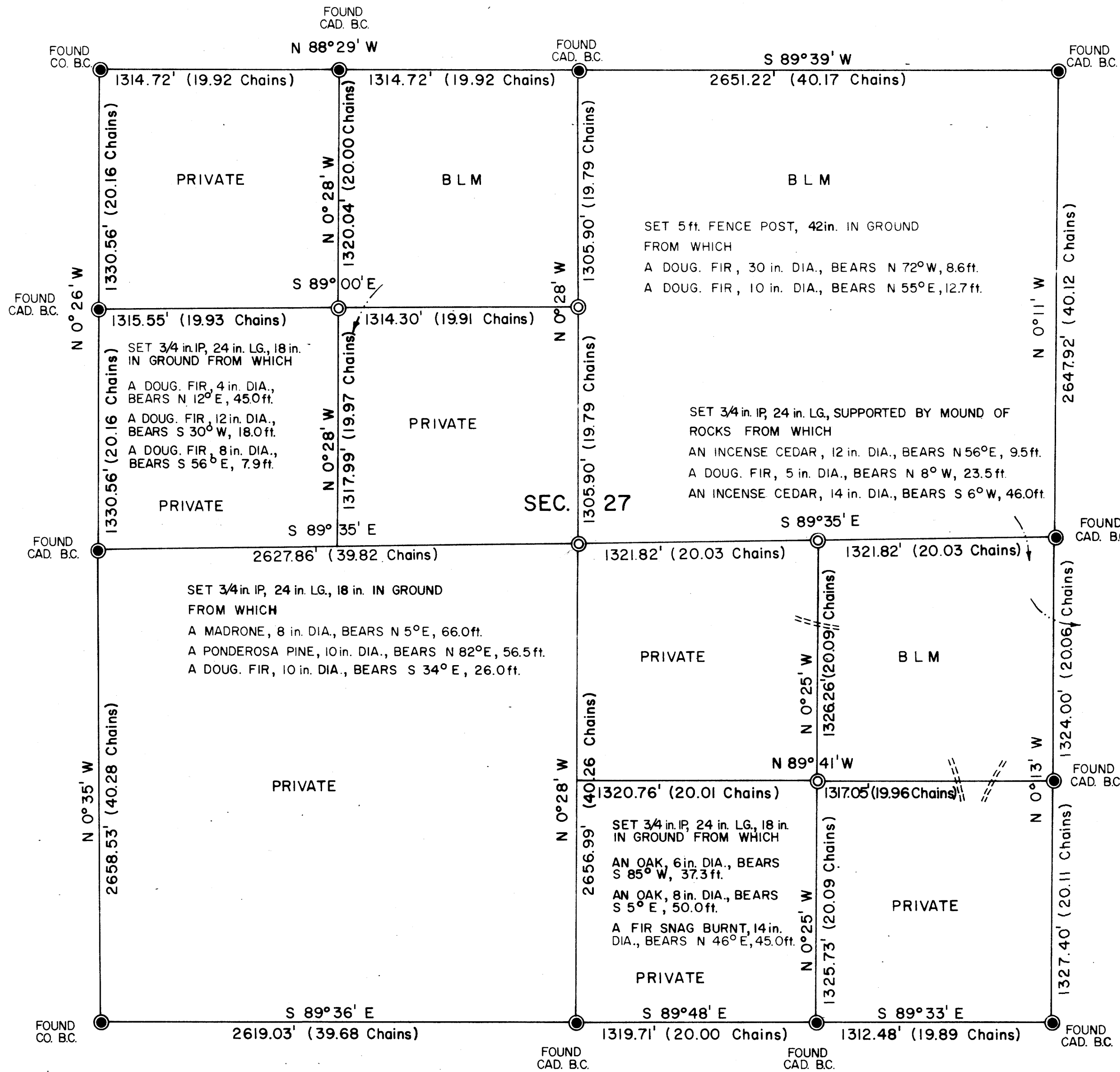
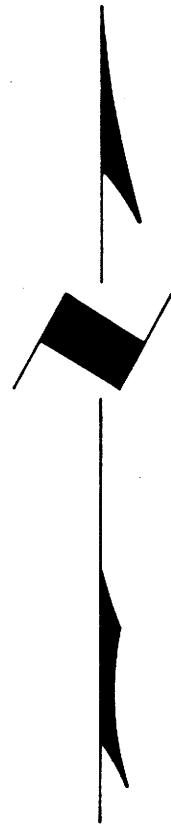


TOWNSHIP 26 SOUTH, RANGE 3 WEST, OF THE WILLAMETTE MERIDIAN, OREGON
ADMINISTRATIVE SURVEY

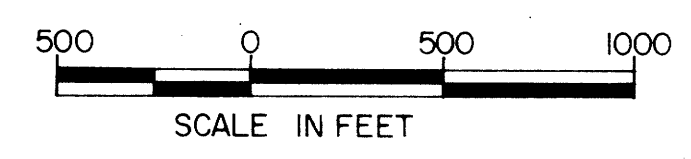
FILED &
RECEIVED *dh*
NOV 26 1979
COUNTY SURVEYOR
DOUGLAS COUNTY, ORE.



THIS PLAT REPRESENTS AN ADMINISTRATIVE SURVEY OF T 26 S, R 3 W, SEC. 27, WILLAMETTE MERIDIAN. BEARINGS ARE DETERMINED BY DIRECT OBSERVATION OF THE SUN AND ALL BLM PROPERTY LINES ARE TAGGED. REFERENCE TREE DISTANCE IS TO FACE OF TREE.

**COUNTY SURVEYORS FILE DATA
DO NOT REMOVE FROM OFFICE**

- LEGEND
- CORNERS FOUND
 - CORNERS SET
 - INTERMITTENT STREAM
 - ROADS



U.S. BUREAU OF LAND MANAGEMENT
ROSEBURG DISTRICT OREGON
DRAWN BY KURT DONNELLY DATE 7-21-78
SURVEYED BY ALEX TUPYI DATE AUGUST 1977
APPROVED BY *David P. Chamberlain* DATE 8-28-78
DISTRICT ENGINEER

MAP FILE M80-79

MAP FILE M80-79