

TOWNSHIP 26 SOUTH, RANGE 3 WEST, OF THE WILLAMETTE MERIDIAN, OREGON

ADMINISTRATIVE SURVEY

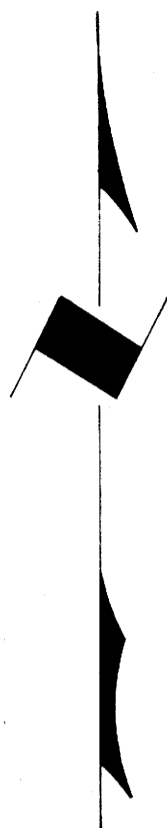
FILED &
RECEIVED *JK*

NOV 26 1979

COUNTY SURVEYOR
DOUGLAS COUNTY, ORE.

v

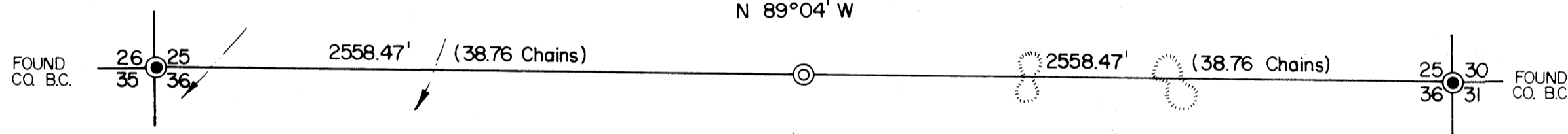
THIS PLAT REPRESENTS AN ADMINISTRATIVE SURVEY OF T 26 S, R 3 W, SEC. 25, WILLAMETTE MERIDIAN. BEARINGS ARE DETERMINED BY DIRECT OBSERVATION OF THE SUN AND ALL BLM PROPERTY LINES ARE TAGGED. REFERENCE TREE DISTANCE IS TO FACE OF TREE.



SEC. 25

BLM

N 89°04' W

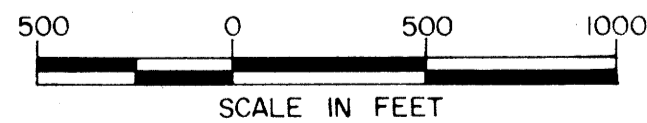


SET 1 in. IP, 24 in. LG, 20 in. IN GROUND FROM WHICH
A FIR, 15 in. DIA., BEARS S 25 3/4° W, 17.1 ft.
A FIR, 38 in. DIA., BEARS N 51 3/4° W, 10.5 ft.

**COUNTY SURVEYORS FILE DATA
DO NOT REMOVE FROM OFFICE**

LEGEND

- CORNERS FOUND
- CORNERS SET
- INTERMITTENT STREAM
- RIDGE



U.S. BUREAU OF LAND MANAGEMENT

ROSEBURG DISTRICT OREGON

DRAWN BY KURT DONNELLY DATE 8-25-78

SURVEYED BY LEONARD HERZSTEIN DATE 8-23-78

APPROVED BY *Paul R. Chamberlain* DATE 9-8-78
DISTRICT ENGINEER

MAP FILE M80-78

MAP FILE M80-78