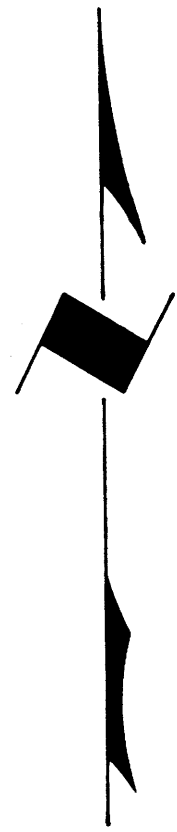


TOWNSHIP 24 SOUTH, RANGE 7 WEST, OF THE WILLAMETTE MERIDIAN, OREGON

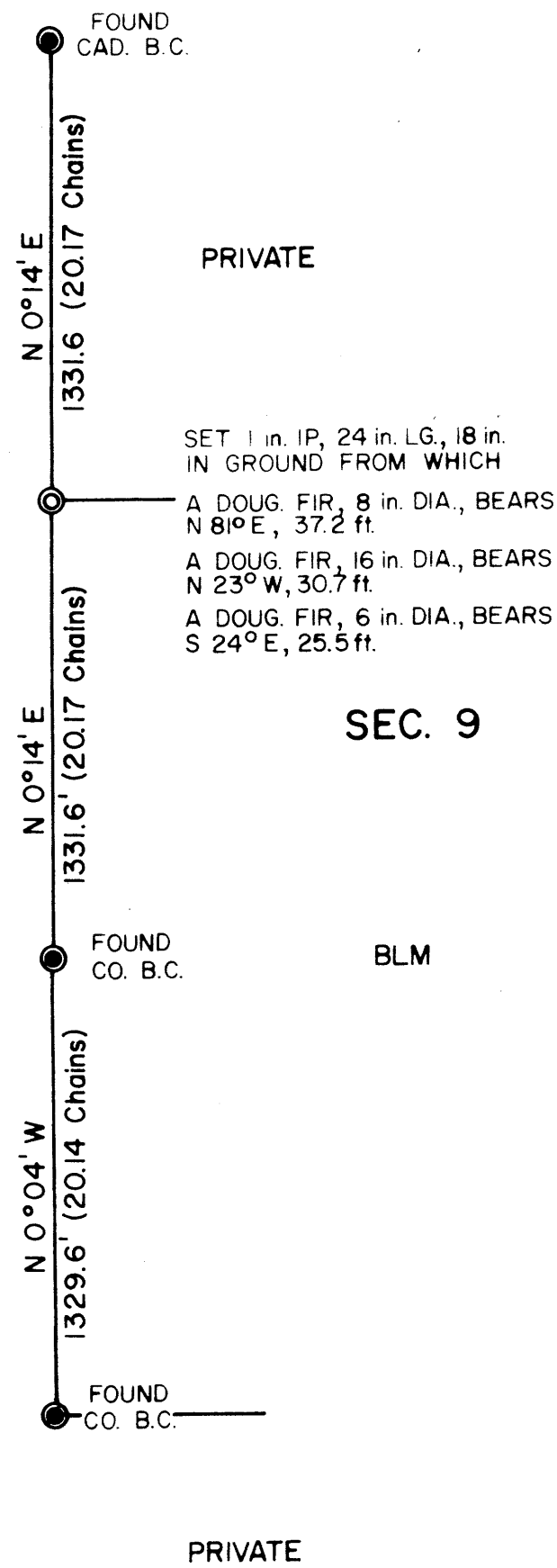
ADMINISTRATIVE SURVEY

FILED *dh*
 RECEIVED *dh*
 NOV 26 1979
 COUNTY SURVEYOR
 DOUGLAS COUNTY, ORE.



THIS PLAT REPRESENTS AN ADMINISTRATIVE SURVEY OF T 24 S, R 7 W, SEC. 9, WILLAMETTE MERIDIAN. BEARINGS ARE DETERMINED BY DIRECT OBSERVATION OF THE SUN AND ALL BLM PROPERTY LINES ARE TAGGED.

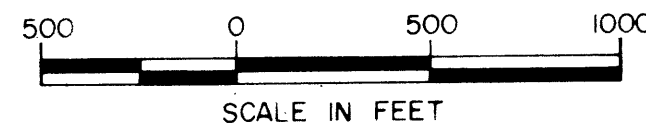
SEC. 8
 PRIVATE



COUNTY SURVEYORS FILE DATA
 DO NOT REMOVE FROM OFFICE

LEGEND

- CORNERS FOUND
- CORNERS SET



U.S. BUREAU OF LAND MANAGEMENT
 ROSEBURG DISTRICT OREGON
 DRAWN BY KURT DONNELLY DATE 6-23-79
 SURVEYED BY CARSON & BYERS DATE MARCH 1979
 APPROVED BY *Bruce P. Chamber* DATE 7-19-79
DISTRICT ENGINEER