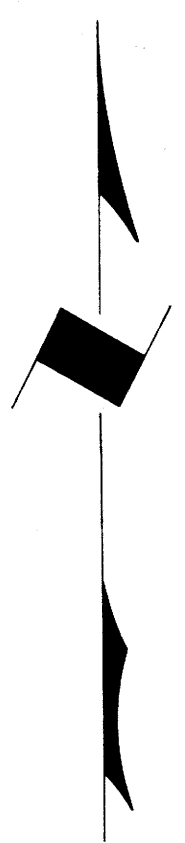


TOWNSHIP 24 SOUTH, RANGE 4 WEST, OF THE WILLAMETTE MERIDIAN, OREGON  
ADMINISTRATIVE SURVEY

FILED &  
RECEIVED *jh*  
NOV 26 1979  
COUNTY SURVEYOR  
DOUGLAS COUNTY, ORE.

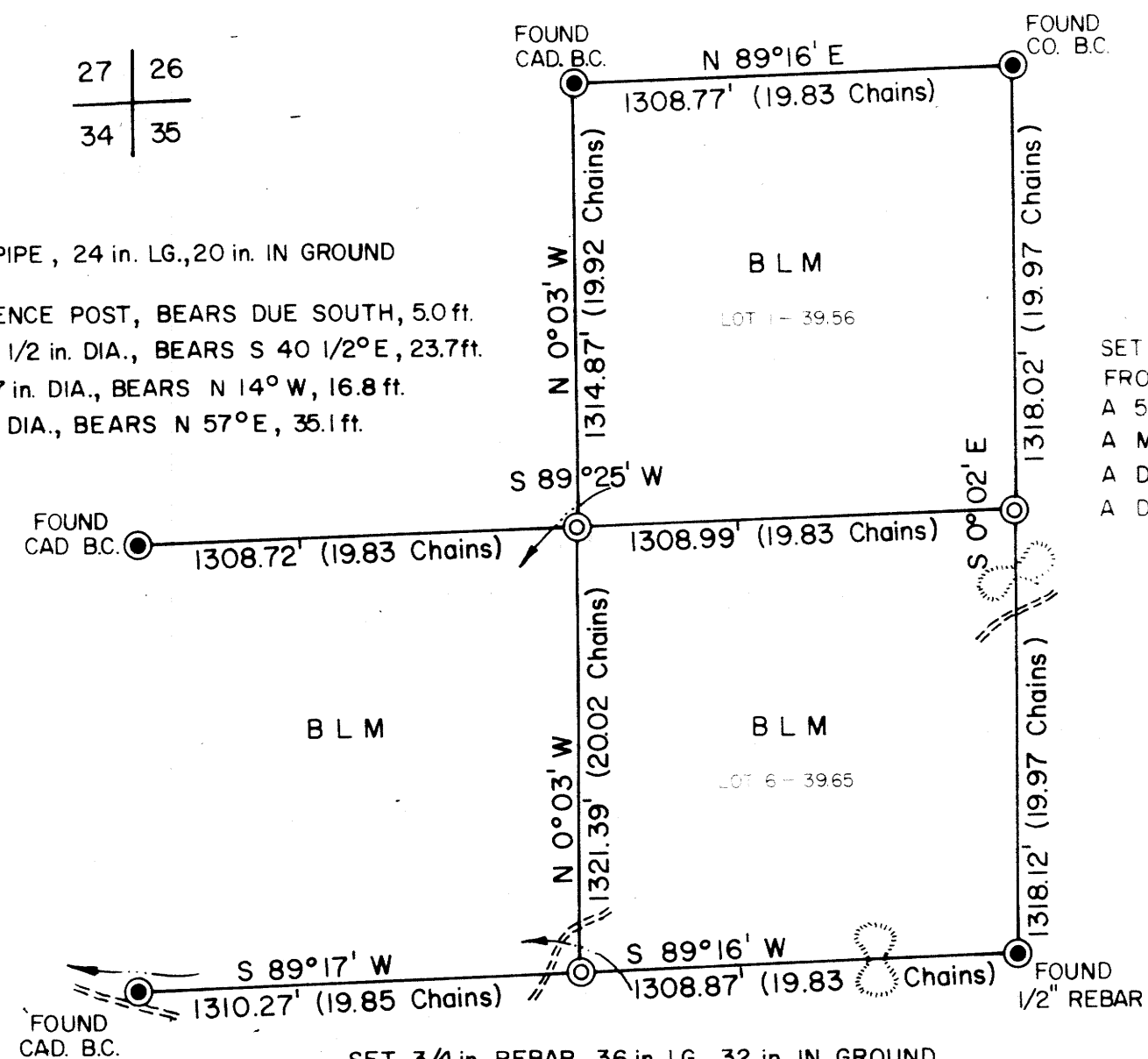


THIS PLAT REPRESENTS AN ADMINISTRATIVE SURVEY OF  
T 24 S, R 4 W, SEC. 35, WILLAMETTE MERIDIAN. BEARINGS  
ARE MAGNETIC. ALL BLM PROPERTY LINES ARE TAGGED.

27	26
34	35

SET 2 in. GALV. PIPE, 24 in. LG., 20 in. IN GROUND  
FROM WHICH  
A 5 ft. STEEL FENCE POST, BEARS DUE SOUTH, 5.0 ft.  
A DOUG. FIR, 31 1/2 in. DIA., BEARS S 40 1/2° E, 23.7 ft.  
A DOUG. FIR, 27 in. DIA., BEARS N 14° W, 16.8 ft.  
A MAPLE 20 in. DIA., BEARS N 57° E, 35.1 ft.

SET 3/4 in. REBAR, 36 in. LG., 32 in. IN GROUND  
FROM WHICH  
A 5 ft. STEEL FENCE POST, BEARS DUE WEST, 5.0 ft.  
A MADRONE, 13 in. DIA., BEARS S 8° W, 15.6 ft.  
A DOUG. FIR, 26 in. DIA., BEARS N 59 1/2° E, 34.3 ft.  
A DOUG. FIR, 30 in. DIA., BEARS N 18° E, 28.9 ft.

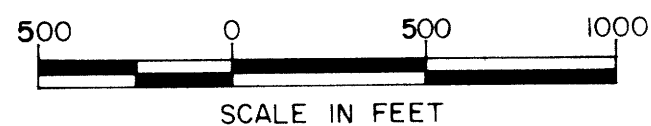


SET 3/4 in. REBAR, 36 in. LG., 32 in. IN GROUND  
FROM WHICH  
A 5 ft. STEEL FENCE POST, BEARS DUE EAST, 4.0 ft.  
A DOUG. FIR STUMP, 32 in. DIA., BEARS N 7 1/2° E, 19.1 ft.  
A DOUG. FIR, 14 1/2 in. DIA., BEARS N 69 1/2° E, 19.0 ft.  
A DOUG. FIR, 40 in. DIA., BEARS S 21° W, 17.2 ft.

COUNTY SURVEYORS FILE DATA  
DO NOT REMOVE FROM OFFICE

LEGEND

- CORNERS FOUND
- CORNERS SET
- INTERMITTENT STREAM
- ROADS
- RIDGE



U.S. BUREAU OF LAND MANAGEMENT  
ROSEBURG DISTRICT OREGON

DRAWN BY KURT DONNELLY DATE 8-9-78  
SURVEYED BY JAMES S. LUSE DATE OCTOBER 1977  
APPROVED BY *James P. Chamberlain* DATE 8-28-78  
DISTRICT ENGINEER