

TOWNSHIP 22 SOUTH, RANGE 4 WEST, OF THE WILLAMETTE MERIDIAN, OREGON

ADMINISTRATIVE SURVEY

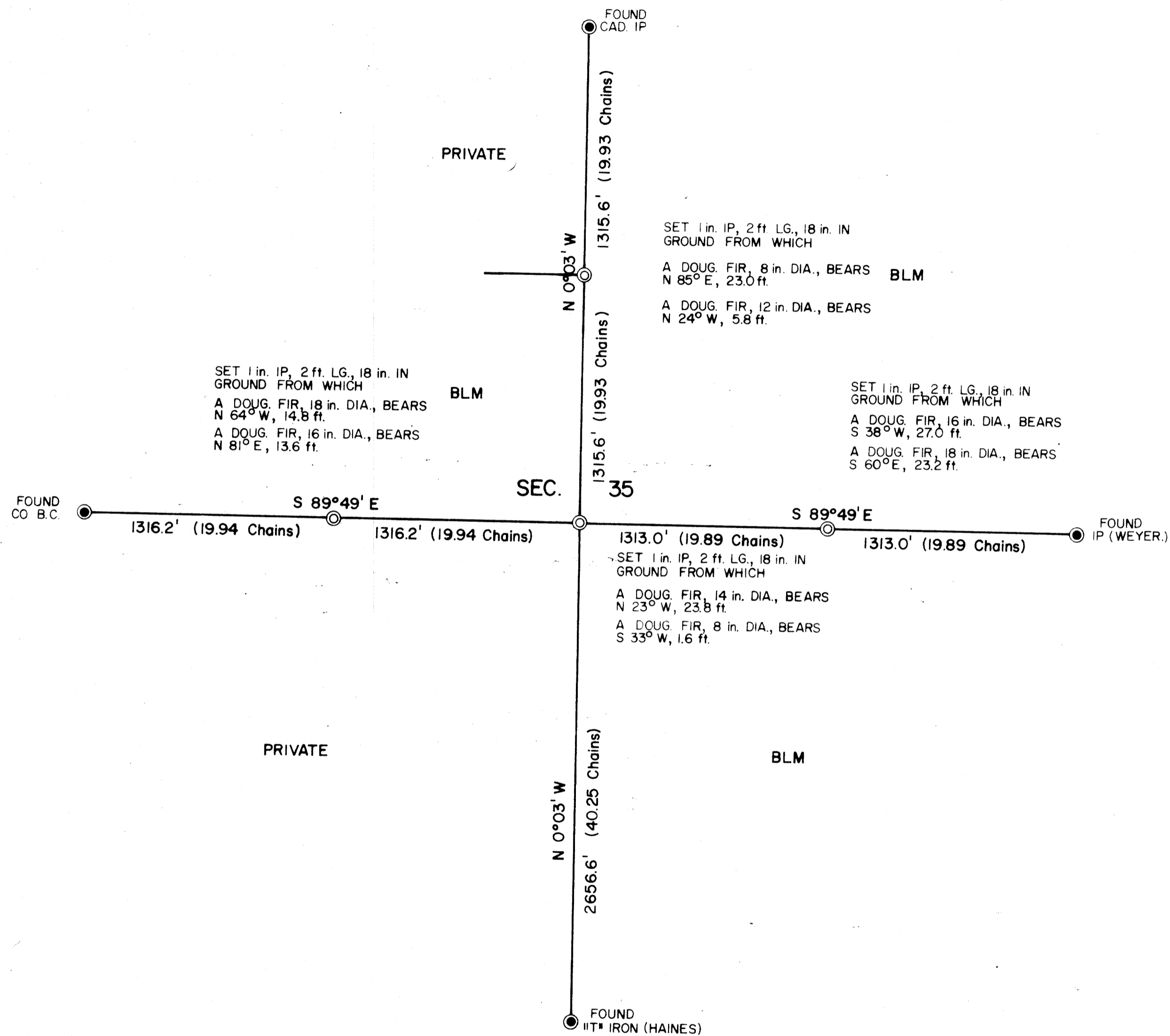
FILED ϕ
RECEIVED *1/8*

NOV 26 1979

COUNTY SURVEYOR
DOUGLAS COUNTY, ORE.

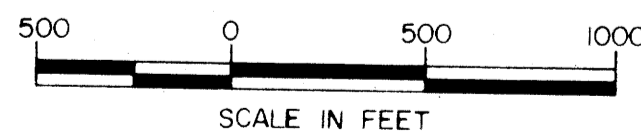
1

THIS PLAT REPRESENTS AN ADMINISTRATIVE SURVEY OF
T 22 S, R 4 W, SEC. 35, WILLAMETTE MERIDIAN. BEARINGS
ARE DETERMINED BY DIRECT OBSERVATION OF THE SUN
AND ALL BLM PROPERTY LINES ARE TAGGED.



LEGEND

- CORNERS FOUND
- CORNERS SET



**COUNTY SURVEYORS FILE DATA
DO NOT REMOVE FROM OFFICE**

U.S. BUREAU OF LAND MANAGEMENT
ROSEBURG DISTRICT OREGON
DRAWN BY KURT DONNELLY DATE 6-25-79
SURVEYED BY CARSON & BYERS DATE FEB. 1979
APPROVED BY *Bruce P. Chambers* DATE 7-19-79
DISTRICT ENGINEER

MAP FILE 1184 - 73

MAP FILE 1184 - 73