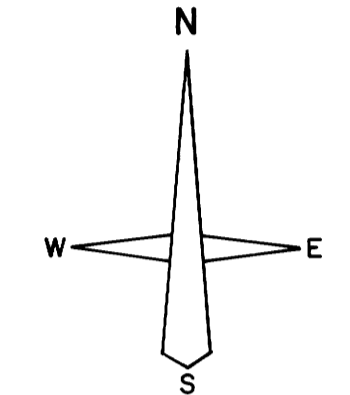


PRELIMINARY ADMINISTRATIVE SURVEY
 FOR FOREST MANAGEMENT PURPOSES OF THE
 MEDFORD DISTRICT
 BUREAU OF LAND MANAGEMENT
 T.32 S., R.3 W., SEC. 6, W.M.
 DOUGLAS COUNTY

SURVEYED BY: T. Nickerson DATE: Oct. 15, 1979



FILED ϕ
 RECEIVED *dh*
 NOV 21 1979
 COUNTY SURVEYOR
 DOUGLAS COUNTY, ORE.
 ϕ

Bearings of reference trees are to the head of a spike driven into the bottom of a blaze near the base of the tree.
 Distances are to side-center of the tree.
 Lines between U.S. and Pvt. were blazed and yellow metal boundary tags were posted.
 Bearings are based on Solar Observations.

LEGEND

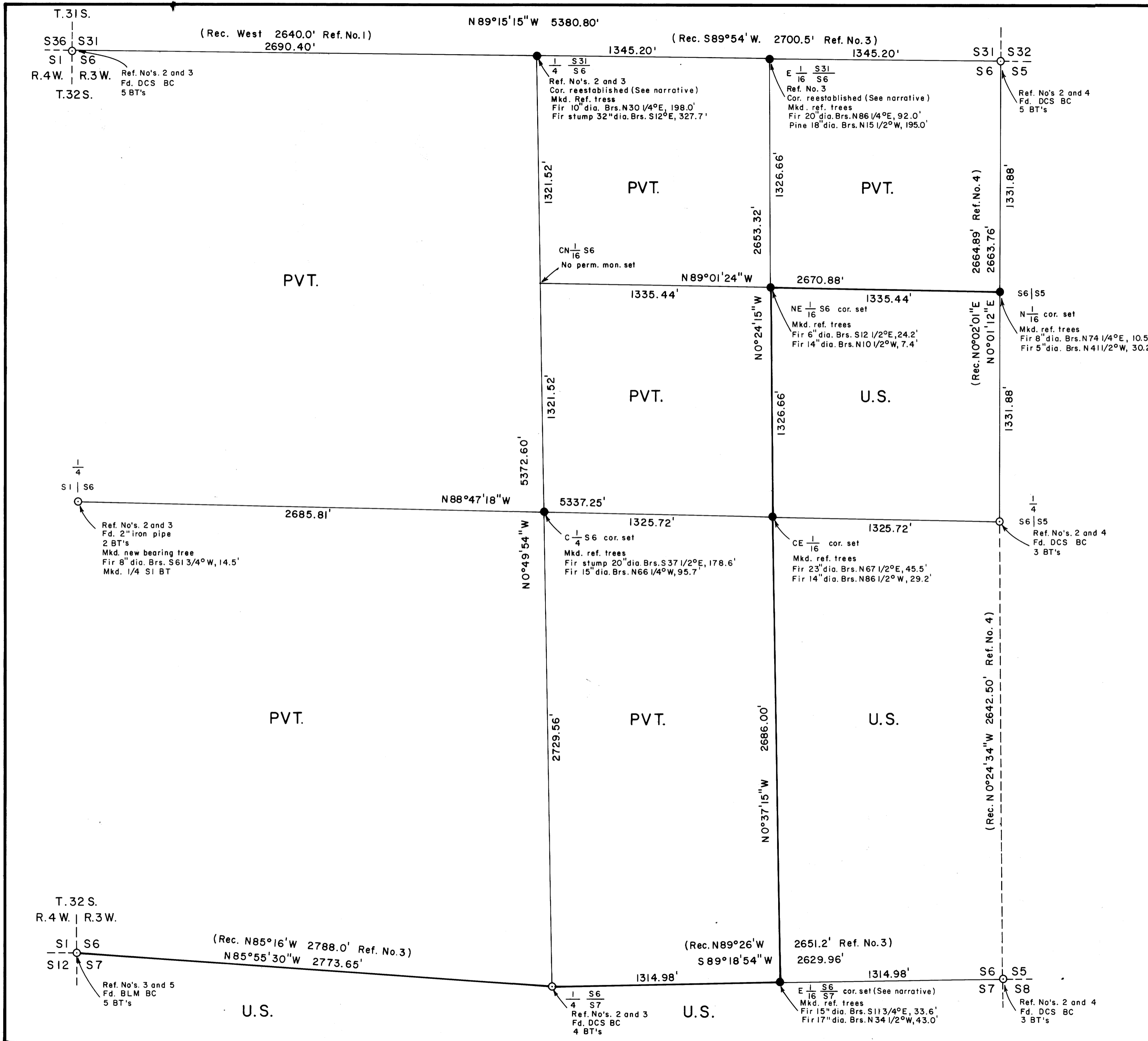
- \circ Monument found.
- \bullet Monument set, (5/8" x 24" rebar).
- Line surveyed.
- True line blazed and posted.

REFERENCES

- Ref. No. 1
 William Byars, U.S. Deputy Surveyor, approved April 26, 1872.
- Ref. No. 2
 Douglas County Surveyor's Record of Government Corners Renewed.
- Ref. No. 3
 Survey by G.J. Wenderoth, C.S. File 40/251, Map File M 27/15.
- Ref. No. 4
 Survey by Don E. Garrett, R.L.S. No. 544, C.S. File 55/224, Map File M 44-8.
- Ref. No. 5
 Group 350 Remonumentation by Hans W. Theilsen, Cadastral Surveyor, 1959.

REGISTERED
 PROFESSIONAL
 LAND SURVEYOR

Terrence O. Nickerson
 T. O. NICKERSON
 JULY 14, 1979
 TERRANCE O. NICKERSON
 1640



U.S. File 58/286(N)
 Map File M 80-7-71

C.S. File 58/286(N)
 Map File M 80-7-71

M 80 - 71

FILED
RECEIVED *JH*

NOV 81 1979

COUNTY SURVEYOR
DOUGLAS COUNTY, ORE.

SURVEY NARRATIVE TO COMPLY WITH O.R.S. 209.250

SURVEY OF: T. 32 S., R. 3 W., Sec. 6, W.M.
Douglas County, Oregon

SURVEY FOR: U. S. Bureau of Land Management
Medford District Office
3040 Biddle Road
Medford, Oregon 97501

PURPOSE: To deliniate Federal lands from private land.

SURVEY BY: Terrence O. Nickerson

DATE: October 15, 1979

PROCEDURE

Beginning at the $\frac{1}{4}$ sec. cor. of secs. 5 and 6, re-monumented by the Douglas County Surveyor, in 1957, monumented with an iron pipe, $1\frac{1}{2}$ ins. diam., firmly set, protruding 6 ins. above the ground, with brass cap mkd.

T 32 S R 3 W
 $\frac{1}{4}$
S 6 | S 5
1957

from which original bearing trees

A fir, 50 ins. diam., bears S. 80° E.,
5.3 ft. dist., to face, with bark scribe
mks $\frac{1}{4}$ S5 CS BT visible.

A fir, 16 ins. diam., bears S. 35° W.,
23.1 ft. dist., with scribe mks. B visible
on open blaze.

and a bearing tree mkd. in 1957

A pine, 13 ins. diam., bears N. 23° W.,
22.2 ft. dist., with healed blaze.

Thence, N. $0^\circ 01' 12''$ E., bet. secs. 5 and 6, intersecting steel fence posts set by Don E. Garret, O.R.L.S. No. 544.

1331.88

Point for the N $\frac{1}{16}$ sec. cor. of secs. 5 and 6.

Set an iron rod, $\frac{5}{8}$ in. diam., 24 ins. long, 20 ins. in the ground.

from which

A fir, 8 ins. diam., bears N. $74\frac{1}{4}^\circ$ E.,
10.5 ft. dist., with spike at base.

A fir, 5 ins. diam., bears N. $41\frac{1}{2}^\circ$ W.,
30.2 ft. dist., with spike at base.

2663.76

The corner of secs. 5, 6, 31, and 32, Tps. 31 and 32 S., R. 3 W., monumented with an iron post, 2 ins. diam., firmly set, protruding 8 ins. above the ground, with brass cap mkd.

T 31 S		
S 31	S 32	R
		3
S 6	S 5	W
T 32 S		
1966		

from which the remaining original bearing tree.

A fir, 36 ins. diam., bears S. 22° E.,
59.4 ft. dist., with faint bark scribing visible.

and bearing trees mkd. in 1966 by the Douglas County Surveyor

A fir, 18 ins. diam., bears S. 12° E.,
31.2 ft. dist., with healed blaze.

A pine, 8 ins. diam., bears S. 35° W.,
24.6 ft. dist., with healed blaze.

A pine, 13 ins. diam., bears N. 38° W.,
17.0 ft. dist., with healed blaze.

A fir stump, 34 ins. diam., bears N. 16° W.,
94.0 ft. dist., with blaze part of tree gone.

Alongside of iron post there is an iron pipe, 2 ins. diam., firmly set, protruding 5 ins. above the ground.

A steel fence post, firmly set, protruding 4½ ft. above the ground, bears approximately east, 6 ft.

From the cor. of secs. 5, 6, 7, and 8, monumented with an iron pipe, 1½ ins. diam., firmly set, protruding 6 ins. above the ground, with brass cap mkd.

T 32 S R 3 W
S 6 S 5
S 7 S 8
1969

from which

A hemlock, 17 ins. diam., bears N. 36½° E.,
12.4 ft. dist., with fragmentary scribing visible on partially healed blaze.

A fir, 38 ins. diam., bears S. 22½° E.,
27.0 ft. dist., with healed blaze.

A fir, 30 ins. diam., bears S. 10° W.,
27.7 ft. dist., with healed blaze.

Thence, S. 89° 18' 54" W., bet. secs. 6 and 7.

1309.70

Point established by G. Wenderoth as the E 1/16 sec. cor. of secs. 6 and 7. This position is not accepted as the E 1/16 sec. cor. because it is not at midpoint bet. the sec. cor. and $\frac{1}{4}$ sec. cor. within the 1947 Manual of Surveying Instructions limits of error, (the manual that Wenderoth should have been using as a guide), monumented with an iron pipe, 1 in. diam., firmly set, protruding 6 ins. above the ground.

from which

A fir, 24 ins. diam., bears S. 38° E.,
12.5 ft. dist., with healed blaze.

A fir, 30 ins. diam., bears S. 30° W.,
23.0 ft. dist., with healed blaze.

1314.98

Point for the E 1/16 sec. cor. of secs. 6 and 7.

Set an iron rod, 5/8 in. diam., 24 ins. long, 20 ins. in the ground.

from which

A fir, 15 ins. diam., bears S. 11 3/4° E.,
33.6 ft. dist., with spike at base.

A fir, 17 ins. diam., bears N. 34 1/2° W.,
43.0 ft. dist., with spike at base.

Begin blazing and posting the true line.

2629.96

The $\frac{1}{4}$ sec. cor. of secs. 6 and 7, monumented with an iron pipe, 1 1/2 ins. diam., firmly set, protruding 6 ins. above the ground, with brass cap mkd.

T 32 S R 3 W

$\frac{1}{4}$ $\frac{S 6}{S 7}$

1969

from which the original bearing trees

A fir, 36 ins. diam., bears N. 80° W.,
9.9 ft. dist., with fragmentary scribe mks.
visible on open blaze.

A fir, 20 ins. diam., bears S. 70° E.,
16.5 ft. dist., with fragmentary scribe mks.
visible on partially healed, previously opened
blaze.

and a bearing tree mkd. in 1950 by G. Wenderoth

A yew, 13 ins. diam., bears S. 26 3/4° E.,
31.8 ft. dist., with fragmentary scribe mks.
visible on mostly healed blaze.

and a bearing tree mkd. by the Douglas County Surveyor
in 1969

A hemlock, 10 ins. diam., bears N. 5° W.,
10.4 ft. dist., mkd. $\frac{1}{4}$ S6 CS BT on partially
healed blaze.

Found bent over iron pipe, 1 in. diam., 2 ft. North of
cor. point. This pipe has obviously been hit by some
sort of blade work and it is not accepted as the cor.
point.

Thence, N. 85° 55' 30" W., bet. secs. 6 and 7, blazing and posting the true line.

2773.65

The cor. of secs. 1, 6, 7, and 12, monumented with an iron post, 2½ ins. diam., firmly set protruding 8 ins. above the ground, with brass cap mkd.

T 32 S	
R 4 W	R 3 W
S 1	S 6
S 12	S 7
1959	

from which bearing trees mkd. in 1897 by Nicklin

A fir, 38 ins. diam., bears S. 8° E.,
141.2 ft. dist., with fragmentary scribe mks.
visible on previously opened blaze.

A fir, 46 ins. diam., bears S. 8½° W.,
109.5 ft. dist., with scribe mks. 4W visible
on previously opened blaze.

A fir, 40 ins. diam., bears N. 18° W.,
71.3 ft. dist., with scribe mk. T visible
on previously opened blaze.

and a bearing tree mkd. in 1959

A fir, 12 ins. diam., bears N. 36° E.,
29.0 ft. dist., with healed blaze.

and a bearing tree called for by Wenderoth in 1950

A fir, 40 ins. diam., bears N. 22° E.,
13.2 ft. dist., with no visible blaze.

From the cor. of secs. 5, 6, 31, and 32, Tps. 31 and
32 S., R. 3 W.

Thence, N. 89° 15' 15" W., bet. secs. 6 and 31.

1345.20

Point for the E 1/16 sec. cor. of secs. 6 and 31.

Set an iron rod, 5/8 in. diam., 24 ins. long, 20 ins. in
the ground.

from which

A fir, 20 ins. diam., bears N. 86¼° E.,
92.0 ft. dist., with spike at base.

A pine, 18 ins. diam., bears N. 15½° W.,
195.0 ft. dist., with spike at base.

1350.2

After diligent search, find no evidence of E 1/16 sec.
cor. established by Wenderoth.

2690.40

Point for the ¼ sec. cor. of secs. 6 and 31, at pro-
portionate distance, there is no remaining evidence of
the original cor. or the perpetuation by Wenderoth and
the Douglas County Surveyor's Office.

Set an iron rod, 5/8 in. diam., 24 ins. long, 20 ins. in the ground.

from which

A fir, 10 ins. diam., bears N. 30¼° E.,
198.0 ft. dist., with spike at base.

A fir stump, 32 ins. diam., bears S. 12° E.,
327.7 ft. dist., with spike at base.

Diligent search was made for evidence of this cor. None could be found. This area is now a cultivated field with all trees and stump removed.

5380.80

The cor. of secs. 1, 6, 31, and 36, Tps. 31 and 32 S., Rs. 3 and 4 W., monumented with an iron pipe, 1½ ins. diam., firmly set, protruding 8 ins. above the ground, with brass cap mkd.

		T 31 S		
R	S 36	S 31	R	
4	S 1	S 6	3	
W		T 32 S	W	
		1966		

from which

A fir, 9 ins. diam., bears N. 2° E.,
120.3 ft. dist., with healed blaze.

A hemlock snag, 13 ins. diam., bears S. 75° E.,
62.9 ft. dist., with scribe mks. visible on open blaze.

A thorn, 8 ins. diam., bears S. 77° E.,
48.8 ft. dist., with fragmentary scribe mks. visible on rotting face.

A hemlock, 14 ins. diam., bears S. 33½° W.,
185.5 ft. dist., with fragmentary scribe mks. visible on mostly healed blaze.

A fir stump, 24 ins. diam., bears N. 12° W.,
142.0 ft. dist.

From the ¼ sec. cor. of secs. 6 and 7.

Thence N. 0° 49' 54" W., along the N. and S. centerline of sec. 6.

2729.56

Point for the center ¼ sec. cor. of sec. 6, at intersection with the E. and W. centerline of sec. 6.

Set an iron rod, 5/8 in. diam., 24 ins. long, 20 ins. in the ground.

from which

A fir stump, 20 ins. diam., bears S. 37½° E.,
178.6 ft. dist., with spike at base.

A fir, 15 ins. diam., bears N. 66¼° W.,
95.7 ft. dist., with spike at base.

4051.08	Point for the CN 1/16 sec. cor. of sec. 6, no permanent monument set.
5372.60	The $\frac{1}{4}$ sec. cor. of secs. 6 and 31.
	<hr/> <p>From the $\frac{1}{4}$ sec. cor. of secs. 5 and 6.</p> <p>Thence N. 88° 47' 18" W., along the E. and W. centerline.</p>
1325.72	Point for the center E 1/16 sec. cor. of sec. 6.
	<p>Set an iron rod, 5/8 in. diam., 24 ins. long, 20 ins. in the ground.</p> <p>from which</p> <p style="padding-left: 40px;">A fir, 23 ins. diam., bears N. 67$\frac{1}{2}$° E., 45.5 ft. dist., with spike at base.</p> <p style="padding-left: 40px;">A fir, 14 ins. diam., bears N. 86$\frac{1}{2}$° W., 29.2 ft. dist., with spike at base.</p>
2651.44	The center $\frac{1}{4}$ sec. cor. of sec. 6.
5337.25	The $\frac{1}{4}$ sec. cor. of secs. 1 and 6, T. 32 S., Rs. 3 and 4 W., monumented with an iron pipe, 2 ins. diam., firmly set, protruding 6 ins. above the ground.
	<p>from which the remains of the remaining original bearing tree</p> <p style="padding-left: 40px;">A sawed fir stump, 21 ins. diam., bears N. 68° E., 5.3 ft. dist., with no mks. visible on rotted, opened blaze.</p> <p>and a bearing tree mkd. by Wenderoth</p> <p style="padding-left: 40px;">A fir snag, 24 ins. diam., bears N. 48° W., 12.0 ft. dist., with bark scribe mks. $\frac{1}{4}$S T32S R4W visible. (Measured to face.)</p> <p>and a new bearing tree</p> <p style="padding-left: 40px;">A fir, 8 ins. diam., bears S. 61 $\frac{3}{4}$° W., 14.5 ft. dist., mkd. $\frac{1}{4}$ S1 BT.</p>
1326.66	<hr/> <p>From the center E 1/16 sec. cor. of sec. 6.</p> <p>Thence, N. 0° 24' 15" W., along the N. and S. centerline of the NE$\frac{1}{4}$ of sec. 6, blazing and posting the true line.</p> <p>Point for the NE 1/16 sec. cor. of sec. 6, at intersection with the E. and W. centerline of the NE$\frac{1}{4}$ of sec. 6.</p> <p>Set an iron rod, 5/8 ins. diam., 24 ins. long, 20 ins. in the ground.</p> <p>from which</p>

A fir, 6 ins. diam., bears S. $12\frac{1}{2}^{\circ}$ E.,
24.2 ft. dist., with spike at base.

A fir, 14 ins. diam., bears N. $10\frac{1}{2}^{\circ}$ W.,
7.4 ft. dist., with spike at base.

No longer blazing and posting the true line.

2653.32

The E 1/16 sec. cor. of secs. 6 and 31.

From the N 1/16 sec. cor. of secs. 5 and 6.

Thence, N. $89^{\circ} 01' 24''$ W., along the E. and W. center-
line of the NE $\frac{1}{4}$ of sec. 6, blazing and posting the
true line.

1335.44

The NE 1/16 sec. cor. of sec. 6.

No longer blazing and posting the true line.

2670.88

Point for the center N 1/16 sec. cor. of sec. 6.

From the E 1/16 sec. cor. of secs. 6 and 7.

Thence, N. $0^{\circ} 37' 15''$ W., along the N. and S. center-
line of the SE $\frac{1}{4}$ of sec. 6, blazing and posting the true
line.

2686.00

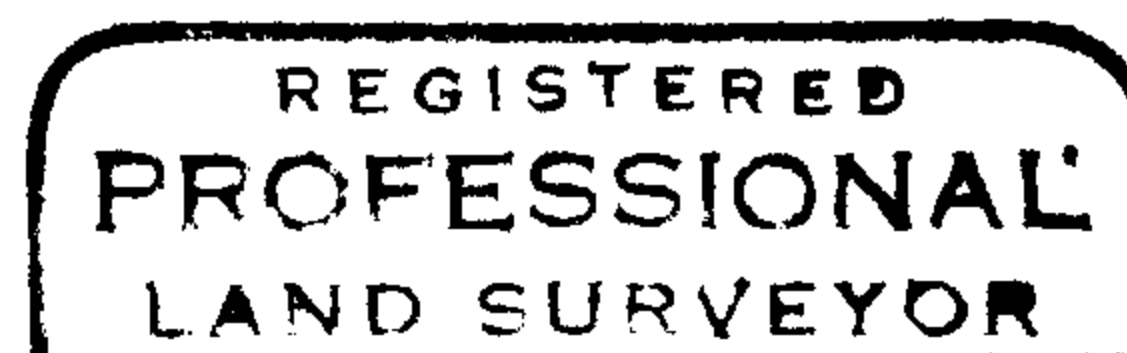
The center E 1/16 sec. cor. of sec. 6.

Bearings of reference trees are to the head of a spike
driven into the bottom of a blaze at the base of the
tree. Distances to bearing trees and reference trees
are to the side center of the tree, unless otherwise
noted. Posting of yellow metal boundary tags was done
along lines bet. U.S. land and private land. Bearings
are based on solar observations obtained at the cor.
of secs. 5, 6, 31, and 32, the $\frac{1}{4}$ cor. of secs. 1 and
6, and at a point near the cor. of secs. 1, 6, 7, and 12.

All lines not forming a closure were measured twice to
preclude error. This survey was executed with a Wilde
T16E Theodolite, an HP-3805A electronic measuring
device, and 66 ft. steel tape.

FIELD ASSISTANTS

Dale Cummins
Ken Jephcott
Kathy Thayer



Terrence O. Nickerson

