

SURVEY FOR ROBERT OSLAR

in Sections 17 & 20, T30S, R4W, W.M.

ORIGINAL SURVEYORS FILE OR
DO NOT REMOVE FROM OFFICE

By: BHW Engineering & Surveying
1205 S. E. Court
Roseburg, Oregon

NARRATIVE:

FIELD CREW: R. QUIMBY, G. LANG, D. DELATTE
OFFICE COMPUTATIONS: R. QUIMBY
DRAFTING: D. HOPKINS
EQUIPMENT: T-1 (WILD) & RED-1 DIST. METER

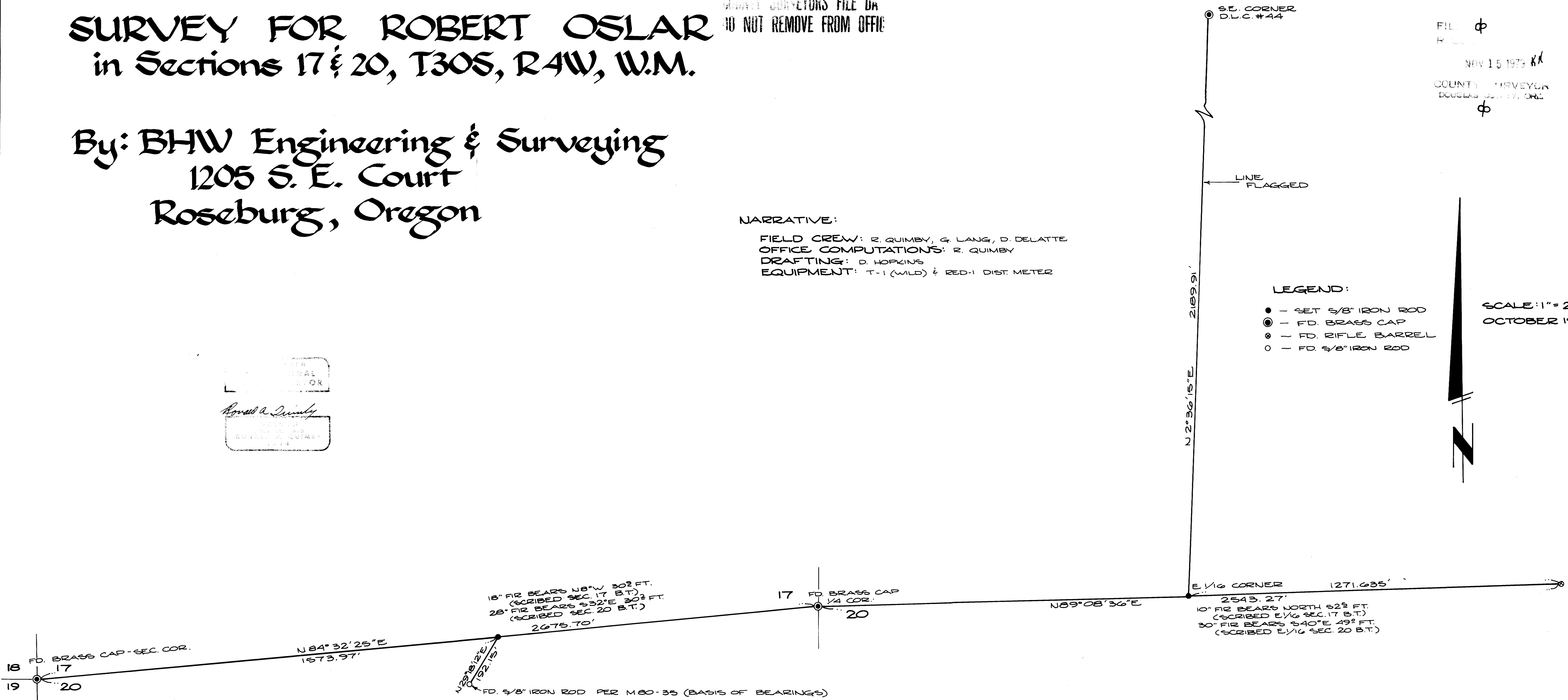
Professional Engineer
Ronald A. Quimby
1974

FILE #
NOV 15 1979
COUNTY SURVEYOR
DOUGLAS COUNTY, ORE.
#

LEGEND:

- - SET 5/8" IRON ROD
- ⊙ - FD. BRASS CAP
- ⊗ - FD. RIFLE BARREL
- - FD. 5/8" IRON ROD

SCALE: 1" = 200'
OCTOBER 1979



MAP FILE: M.80-63

MAP FILE: M.80-63