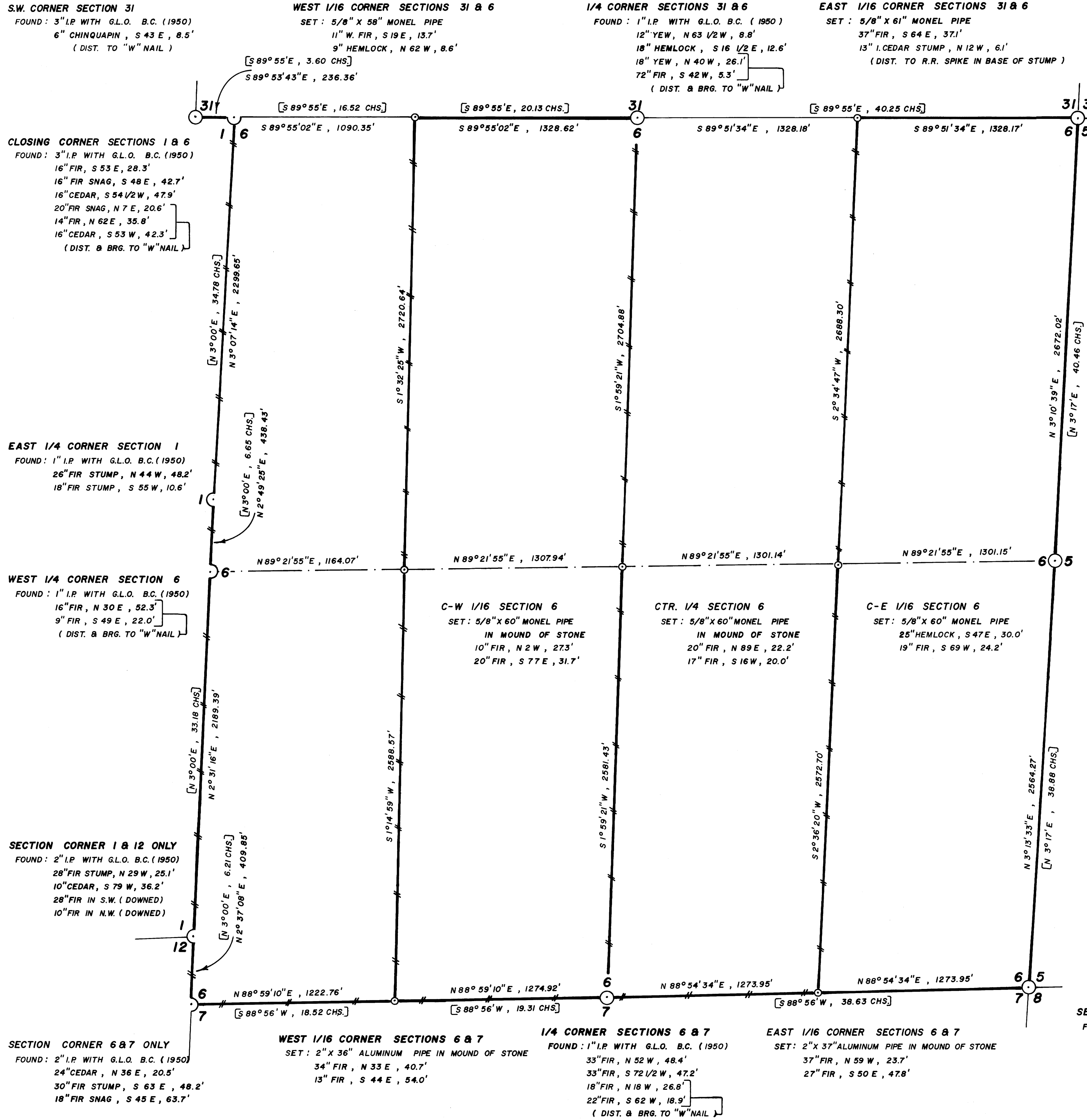


MAP FILE 1180 - 57



SECTION CORNER 31, 32, 5 & 6
 FOUND: 2" I.P. WITH G.L.O. B.C. (1950)
 18" YEW SNAG, N 41 E, 31.9'
 60" FIR STUMP, S 70 W, 53.8' (brq. & dist. to "W" nail)
 SET: 8" FIR, N 53 E, 15.4'

1/4 CORNER SECTIONS 5 & 6
 FOUND: 1" I.P. WITH G.L.O. B.C. (1950)
 18" FIR, N 80 E, 4.8'
 11" FIR, N 31 W, 22.1'
 21" FIR, N 24 W, 18.9'
 14" FIR, S 36 E, 16.2'
 (DIST. & BRG. TO "W" NAIL)

LEGEND
 ○ CORNERS FOUND AND USED FOR CONTROL
 ⊙ CORNERS SET THIS SURVEY
 ——— PROPERTY LINE BLAZED (one notch in blaze)
 - - - - - PROPERTY LINE BLAZED (two notches in blaze)
 [] G.L.O. BEARING AND DISTANCE

BASIS OF BEARING: SOLAR OBSERVATION
 SCALE: 1" = 400'

NOTE: DISTANCE TO BEARING TREES SET THIS SURVEY
 ARE CENTER MEASURE, BEARINGS MAGNETIC,
 VARIATION 20°

THIS SURVEY WAS MADE BY DONALD L. PEEL OF TRIANGLE ENGINEERING CO. DURING THE MONTHS OF SEPTEMBER & OCTOBER, 1979. THE SURVEY WAS OF SECTION 6, T24S, R3W, W.M., DOUGLAS COUNTY, OREGON. CLOSED TRANSIT TRAVERSES, WITH A MINIMUM ERROR OF CLOSURE OF 1/5000', WERE RUN FOR CONTROL. OFFSETS TO THE TRUE LINE WERE CALCULATED AND USED TO DETERMINE THE POSITION OF THE TRUE LINE. THE TRUE LINE WAS MARKED WITH 2 BLAZES (either one or two notches were cut in the center of each blaze) ON TREES ON EACH SIDE OF THE TRUE LINE. A SOLAR OBSERVATION WAS MADE TO DETERMINE BEARING.

Donald L. Peel

SURVEY OF SECTION 6, T24S, R3W, W.M. DOUGLAS COUNTY, OREGON

SECTION CORNER 5, 6, 7 & 8
 FOUND: 2" I.P. WITH G.L.O. B.C. (1950)
 30" CEDAR, N 11 W, 45.1'
 28" FIR, N 88 E, 33.0'
 52" FIR STUMP, S 48 E, 3.8' (face measure)
 24" FIR, S 58 W, 64.2'
 40" CEDAR, N 86 W, 59.9'
 (DIST. & BRG. TO "W" NAIL)

FOR
WEYERHAEUSER COMPANY
 &
CHAMPION INTERNATIONAL
 BY
TRIANGLE ENGINEERING COMPANY
 1262 LAWRENCE, SUITE 4
 EUGENE, OREGON 97401
 OCTOBER, 1979

COUNTY SURVEYORS FILE D
 DO NOT REMOVE FROM OFFICE

MAP FILE 1180 - 57