

COUNTY SURVEYOR FILE NO. 1
DO NOT REMOVE FROM OFFICE

FILED ϕ
RECEIVED ϕ

NOV 6 1979

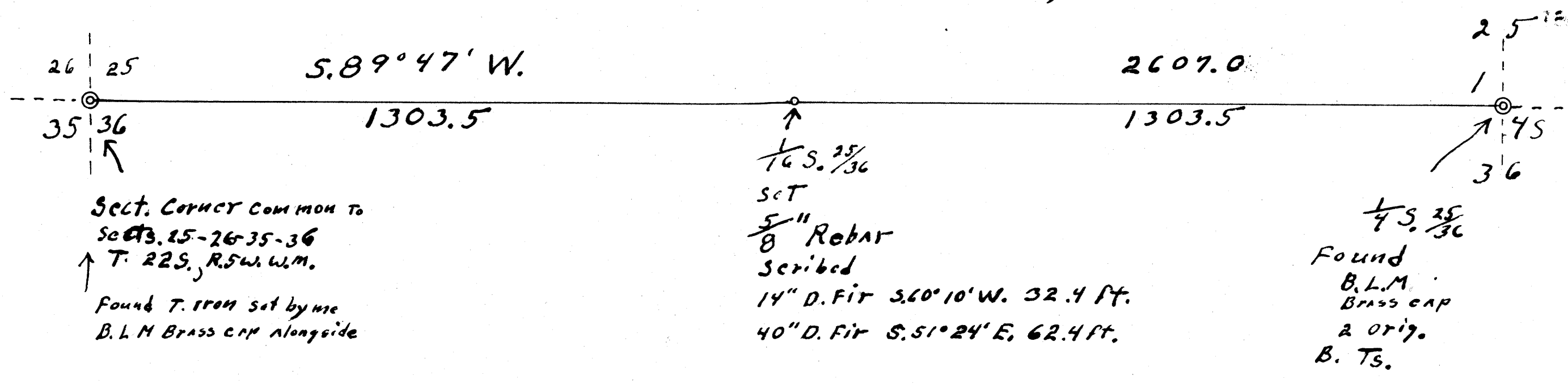
COUNTY SURVEYOR
DOUGLAS COUNTY, ORE.

W $\frac{1}{2}$ Line 25+36 T. 22S. R. 5W. W. M.

For Woolley Enterprises 14C

S
Scale 1" = 200'

Oct. 18, 1979



Sect. Corner common to
 Sects. 25-26-35-36
 T. 22S., R. 5W., W. M.
 Found T. iron set by me
 B. L. M. Brass cap alongside

1/4 S. 25/36
 set
 5/8" Rebar
 scribed
 14" D. Fir S. 60° 10' W. 32.4 ft.
 40" D. Fir S. 51° 24' E. 62.4 ft.

1/4 S. 25/36
 Found
 B. L. M.
 Brass cap
 2 orig.
 B. Ts.

The purpose of this survey was to set
 The W $\frac{1}{2}$ Corner on the Section line common to
 sections 25+36 T. 22S., R. 5W., W. M.
 I started at $\frac{1}{4}$ Sect. Corner common to said
 section and ran S. 89° 47' W. at 1303.5' midpoint
 on said line, I set $\frac{1}{4}$ corner and at 2607.0' inter-
 sect section corner common to sections 25,
 26, 35 and 36.

North
 Based on 1977
 M. 80-54
 for Sect line Sects
 25+36
 B. L. M. Platf dated
 March 29, 1977

REGISTERED
 OREGON
 LAND SURVEYOR
 Wilford N. Haines
 MAY 7, 1948
 WILFORD N. HAINES
 239