

**COUNTY SURVEYORS FILE DATA
DO NOT REMOVE FROM OFFICE**

S.R.C.T.s. 11+14 T.22 S. R 6 W W. M.

Scale 1" = 100'

WARREN T. DELA VERGNE

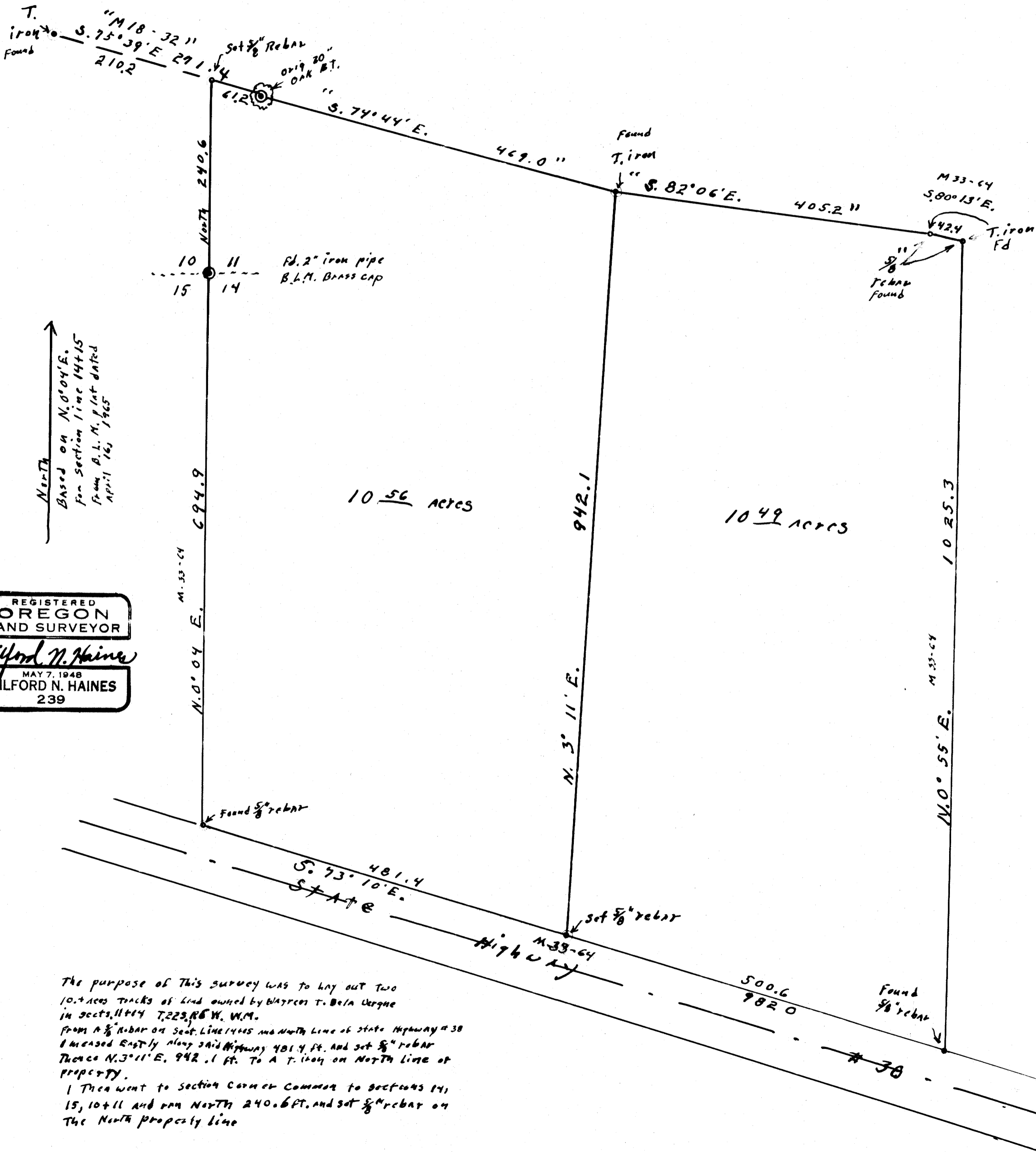
Oct. 1979

Drain, Ore.

FILED ϕ
RECEIVED ϕ

NOV 6 1979

COUNTY SURVEYOR
DOUGLAS COUNTY, ORE.



REGISTERED
OREGON
LAND SURVEYOR

Wilford N. Haines
MAY 7, 1948
WILFORD N. HAINES
239