

COUNTY SURVEYORS FILE DATA
 NOT REMOVE FROM OFFICE

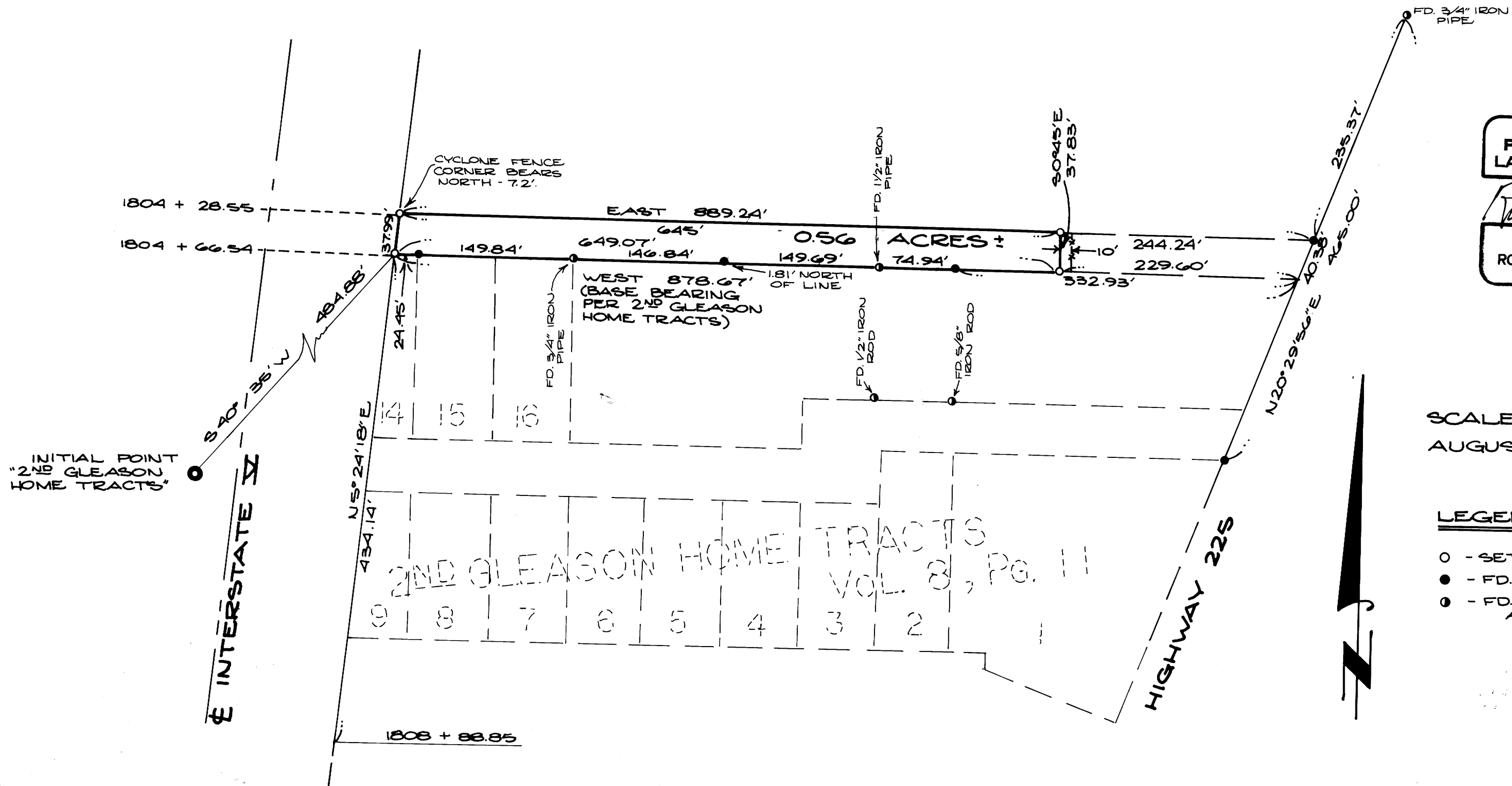
SURVEY IN LOT 3, PLAT "L," S.L. & W. CO. in Section 19, T25S, R5W, W.M.

For: Dave Hanson
 By: BHW Engineering & Surveying

FILED
 RECEIVED

SEP 21 1979

COUNTY SURVEYOR
 WASHINGTON COUNTY, ORE.



REGISTERED
 PROFESSIONAL
 LAND SURVEYOR

Romano E. Ware

OREGON
 NOV. 18, 1973
 ROMANSO E. WARE
 1005

SCALE: 1" = 100'
 AUGUST 1979

LEGEND

- - SET 5/8" IRON ROD
- - FD. 1/2" IRON PIPE
- ⊙ - FD. MONUMENT AS NOTED



MAP FILE 1780-5

MAP FILE 1780-5