

COUNTY SURVEYORS FILE DATA  
DO NOT REMOVE FROM OFFICE

COUNTY SURVEYOR  
CLATSOP COUNTY, ORE.

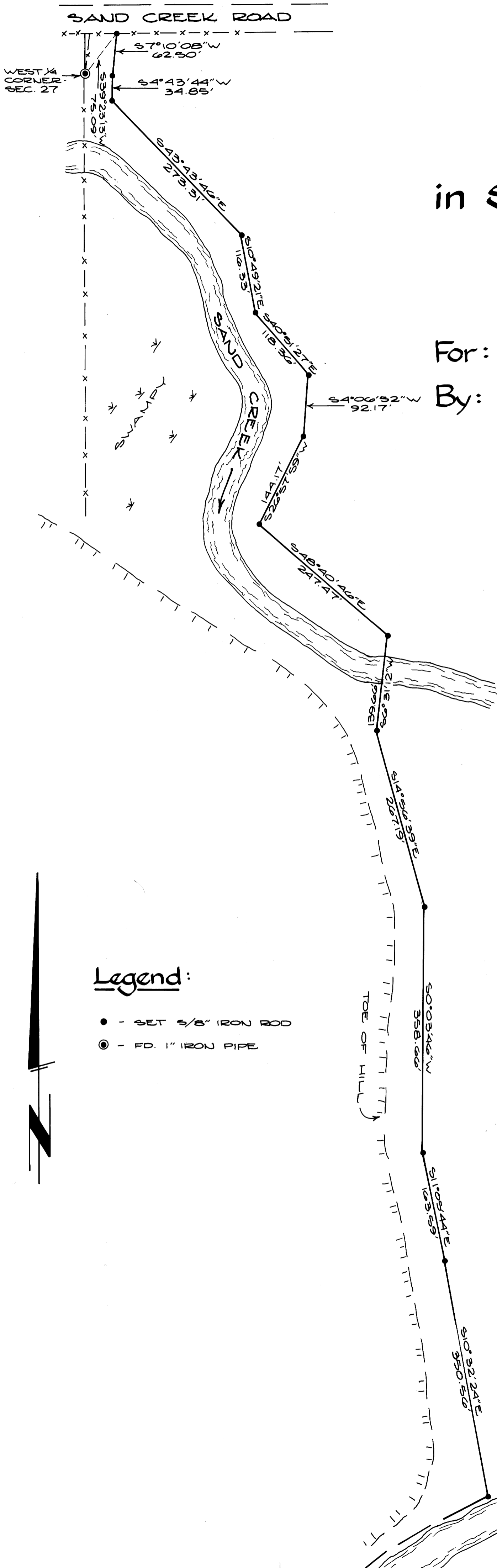
# SURVEY

## in Section 27, T21S, R5W, W.M.

For: Little River Lumber Products Co.  
By: BHW Engineering & Surveying

October 1979

Scale: 1" = 100'



### Legend:

- - SET 5/8" IRON ROD
- ⊙ - FD. 1" IRON PIPE

REGISTERED  
PROFESSIONAL  
LAND SURVEYOR

*Romanso E. Ware*

OREGON  
NOV. 16, 1975  
ROMANSO E. WARE  
1005

BEARINGS BASED ON SOLAR  
OBSERVATION - OCTOBER 11, 1979.