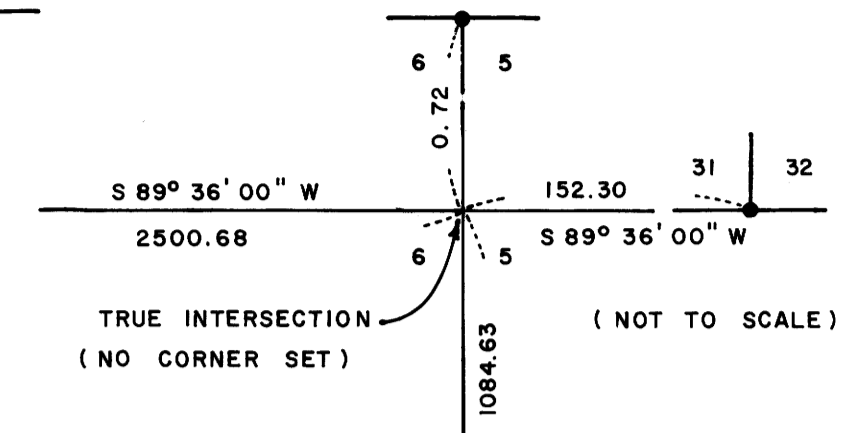
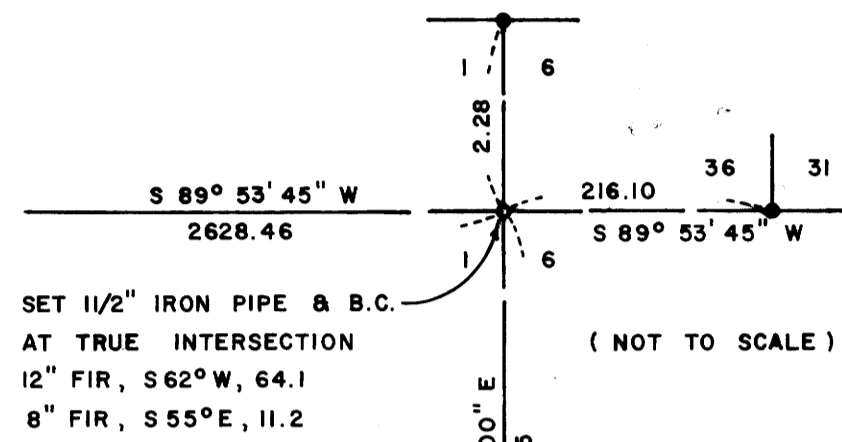
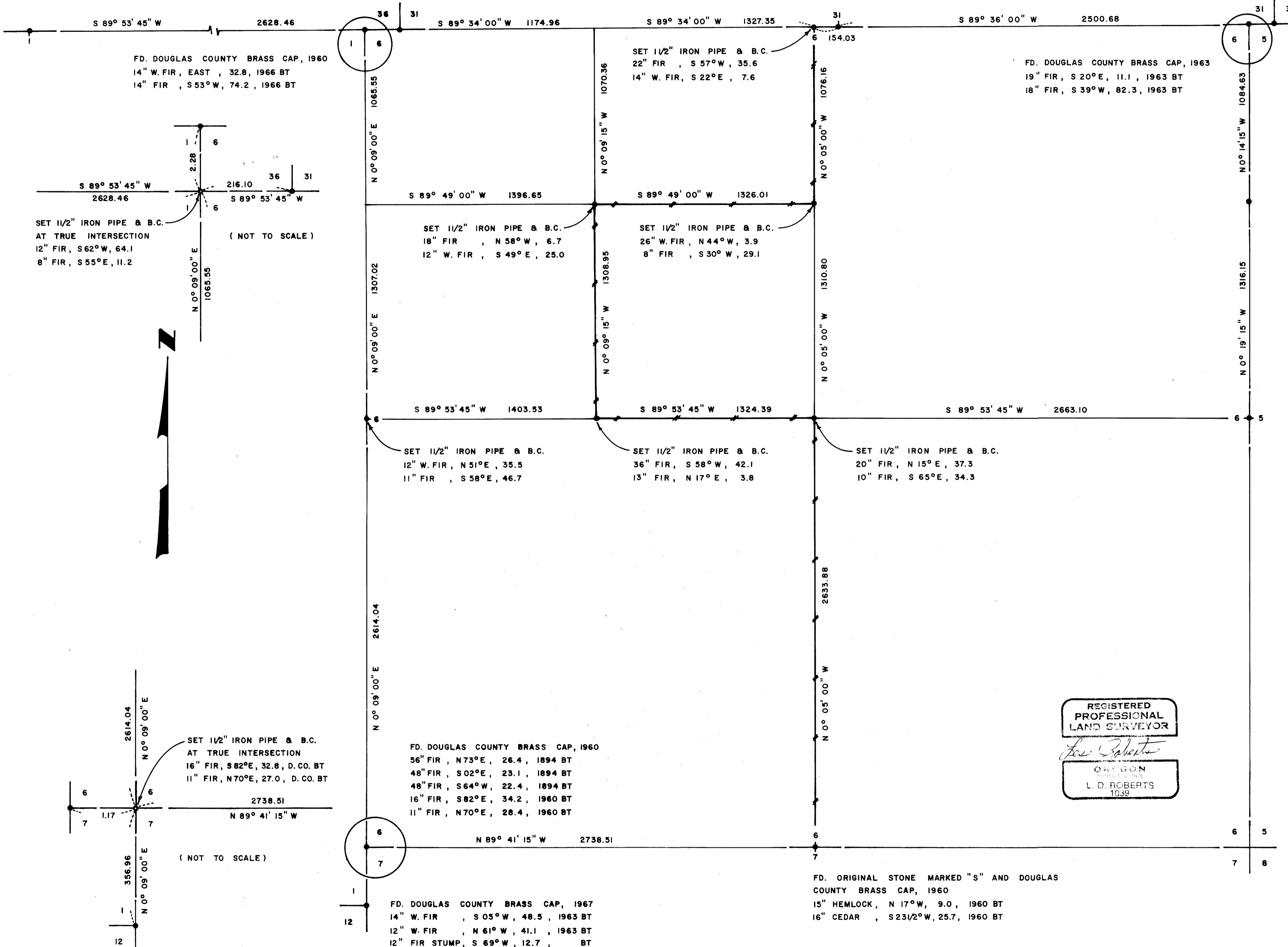


FD. DOUGLAS COUNTY BRASS CAP, 1965
 30" FIR SNAG, N 16 1/2° W, 40.3, 1894 BT
 12" FIR, S 01° E, 15.7, 1965 BT
 9" FIR, S 67° W, 18.5, 1965 BT

FD. DOUGLAS COUNTY BRASS CAP, 1960
 30" FIR, N 28° W, 72.6, 1857 BT
 18" FIR, N 72° E, 62.5, 1960 BT
 16" FIR, N 63° W, 53.6, 1960 BT

FD. B.L.M. BRASS CAP, 1963
 18" FIR, N 43° E, 39.9, 1963 BT
 14" FIR, N 53° W, 62.7, 1963 BT

FD. DOUGLAS COUNTY BRASS CAP, 1960
 52" FIR, N 13° W, 105.6, 1857 BT
 14" FIR, N 14° E, 13.0, 1960 BT
 12" W. FIR STUB, N 57 1/2° W, 37.8, 1960 BT



FD. B.L.M. BRASS CAP, 1963
 12" FIR, S 51° E, 40.9, 1963 BT
 13" FIR, S 47° W, 49.5, 1963 BT

FD. DOUGLAS COUNTY BRASS CAP, 1960
 12" W. FIR, S 48° W, 9.3, 1960 BT
 24" CEDAR, N 40° W, 46.9, 1963 BT
 14" FIR, N 06 1/4° E, 50.8, 1963 BT

SURVEY OF
 SECTION 6, T24S, R7W, W.M.
 DOUGLAS COUNTY, OREGON
 FOR
 INTERNATIONAL PAPER COMPANY
 BY
 TRIANGLE ENGINEERING COMPANY
 JULY 1979
 SCALE 1" = 400'

REGISTERED
 PROFESSIONAL
 LAND SURVEYOR
L. D. Roberts
 OREGON
 L. D. ROBERTS
 1039

- LEGEND
- CORNERS FOUND AND USED FOR CONTROL
 - CORNERS SET
 - / — LINES MARKED BY INTERNATIONAL PAPER CREW
 - BASIS OF BEARING, SOLAR OBSERVATION
 - DISTANCE TO BEARING TREES ARE CENTER MEASURE
 - ALL BEARING TREES ARE SCRIBED

COUNTY SURVEYORS FILE DATA
 DO NOT REMOVE FROM OFFICE

MAP FILE M80-47

M 80-47