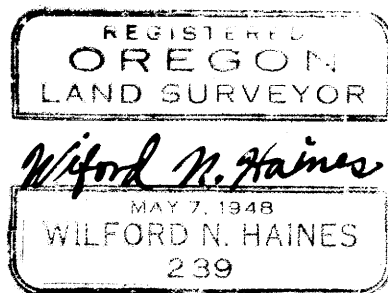


# MINOR LAND PARTIONING

SE. 1/4, Sect. 17, T.22S., R.5W. W.M.

partitioner and owner  
Edward T. Aldous  
Drain, Oregon, 97435  
phone 836-7070

Map prepared by  
Wilford N. Haines  
RT. 38 Box 2  
Drain Oreg. 97435



SE Corner  
D.L.C. #40  
Fd. 2" iron  
pipe  
Mound of stone

17x1 gone  
set 3/4" Bolt

South Line D.L.C. #40  
N.88°49'E. 1252.70

USC & GS.  
BENCHMARK  
Name F555  
year 1954  
ELEVATION 312.309

Scale: 1" = 200'

Monument Sound

Set 3/8" Rebar  
This survey

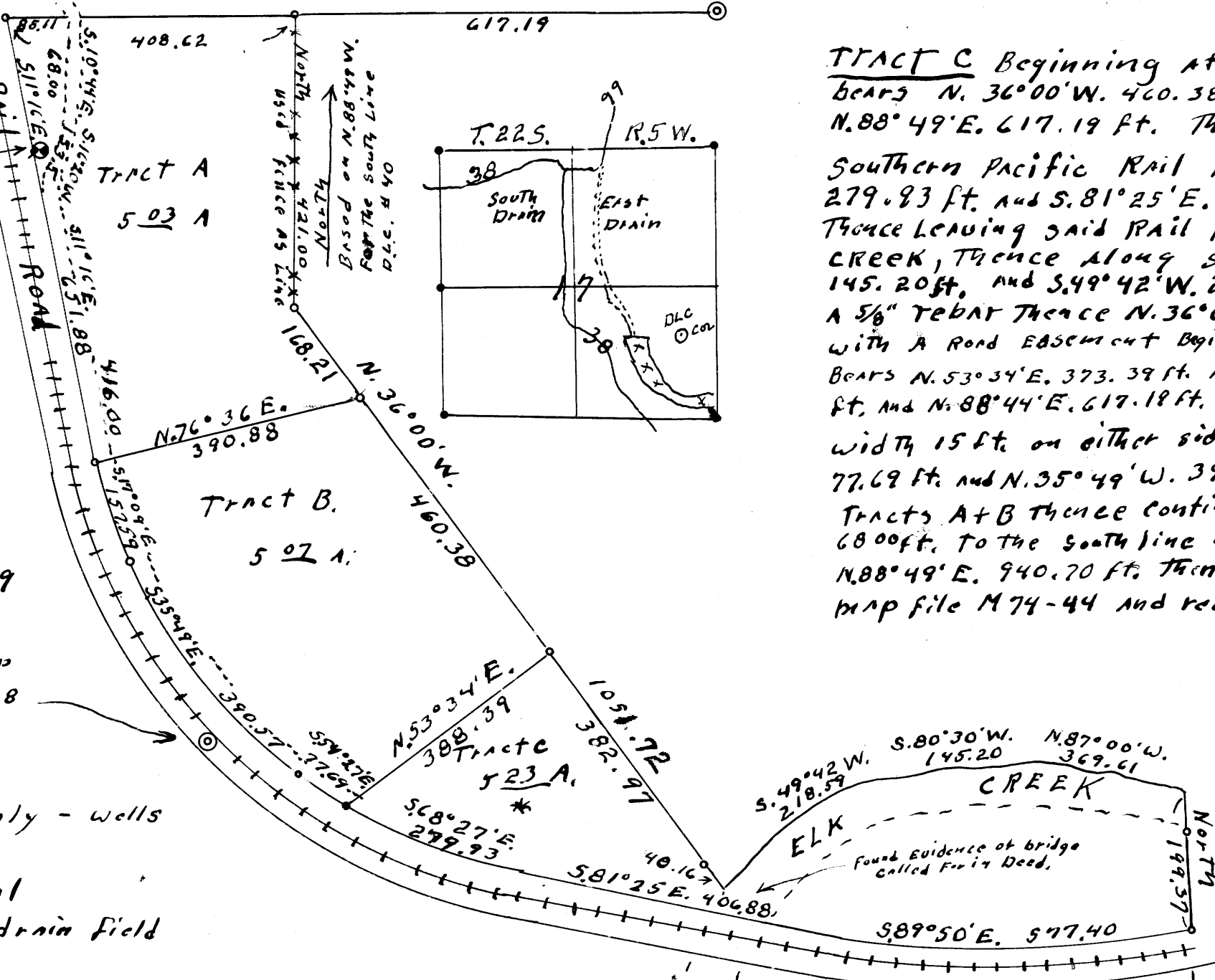
Sept. 26 1979

Found Brass cap  
County # C1-18

Water supply - wells

Sewage disposal  
septic tank & drain field

\* Tract C has no septic approval



**TRACT A** Beginning at a 3/8" rebar on the south line of D.L.C. #40 T.22S., R.5W. W.M. from which the S.E. corner of said D.L.C. bears N.88°49'E. 617.19 ft., thence S.88°49'W. 408.62 ft. to a 5/8" rebar on the east line of the Southern Pacific Rail Road, thence S.11°16'E. 651.88 ft. along said Rail Road to a 5/8" rebar, thence leaving said Rail Road N.76°36'E. 390.88 ft. to a 3/8" rebar, thence N.36°00'W. 168.21 ft. to a 3/8" rebar, thence North 421.00 ft. to the place of beginning, also the rights to use of a road shown on map file M.74-44 and recorded under #

**TRACT B** Beginning at a 5/8" rebar from which point the S.E. corner of D.L.C. #40 T.22S., R.5W. W.M. bears N.36°00'W. 168.21 ft. and North 421.00 and N.88°49'E. 617.19 ft., thence S.76°36'W. 390.88 ft. to a 5/8" rebar on Southern Pacific Rail Road, thence along said Rail Road S.17°09'E. 157.59 and S.35°49'E. 390.57 and S.54°27'E. 77.69 ft. to a 5/8" rebar, thence leaving said Rail Road N.53°34'E. 388.39 ft. to a 5/8" rebar, thence N.36°00'W. 460.38 ft. to the place of beginning together with the right to use of a road easement 30 ft. in width beginning at a point from which the southeast corner of D.L.C. #40 T.22S., R.5W. W.M. bears S.76°36'W. 150 ft. and N.11°16'W. 651.88 ft. and N.88°49'E. 1025.81 ft. thence 15.0 ft. on either side of the following center line N.11°16'W. 416.0 ft. and N.16°20'E. 153.5 ft. and N.10°44'W. 68.00 ft. to the south line of D.L.C. #40 from which point the S.E. corner said D.L.C. bears N.88°49'E. 940.70 ft., thence continue on road shown on county surveyors map file M.74-44 and recorded in Recorder's # to a street in Drain.

**TRACT C** Beginning at a 5/8" rebar from which S.E. corner of D.L.C. #40 bears N.36°00'W. 460.38 ft. and N.36°00'W. 168.21 ft. and North 421.00 ft. and N.88°49'E. 617.19 ft. thence S.53°34'W. 388.39 ft. to a 5/8" rebar on the Southern Pacific Rail Road, thence on said Rail Road boundary S.68°27'E. 279.83 ft. and S.81°25'E. 406.88 ft. and S.89°50'E. 577.40 ft. to a 5/8" rebar thence leaving said Rail Road North 199.37 ft. to the North bank of Elk Creek, thence along said North bank N.87°00'W. 369.61 ft. and S.80°30'W. 145.20 ft. and S.49°42'W. 218.59 ft. to a point, thence N.36°00'W. 40.16 ft. to a 5/8" rebar thence N.36°00'W. 460.38 ft. to the point of beginning, together with a road easement beginning at a point from which the S.E. corner of D.L.C. #40 bears N.53°34'E. 373.39 ft. and N.36°00'W. 460.38 ft. and N.36°00'W. 168.21 and North 421.00 ft. and N.88°49'E. 617.19 ft. thence Northwesterly on an easement 30.0 ft. in width 15 ft. on either side of a line 15 ft. from Rail Road which bears N.54°27'W. 77.69 ft. and N.35°49'W. 390.57 and N.17°09'W. 157.59 ft. to the line between Tracts A+B thence continue N.11°16'W. 416.0 ft. and N.16°20'E. 153.5 ft. and N.10°44'W. 68.00 ft. to the south line of D.L.C. #40 from which point the S.E. corner bears N.88°49'E. 940.70 ft. thence continue Northwesterly on road shown on county surveyors map file M.74-44 and recorded in Recorder's # to a street in Drain.

FILED  
RECEIVED JWH  
OCT 23 1979  
COUNTY SURVEYOR  
DOUGLAS COUNTY, ORE.

Approvals  
Keith L. Cubo  
Planning Commission  
County Surveyor

STATE OF OREGON )  
COUNTY OF DOUGLAS ) SS.  
I, DORIS L. WADSWORTH, COUNTY CLERK  
AND RECORDER OF CONVEYANCES, IN AND FOR  
SAID COUNTY, DO HEREBY CERTIFY THAT THE  
WITHIN INSTRUMENT WAS RECORDED THIS DAY:

BY Mary L. Seal  
DEPUTY  
NO. \_\_\_\_\_ FEE 6.00  
DOUGLAS COUNTY OFFICIAL RECORDS

Fd. Bolt 17/20 16/21

MAP FILE M80-41

MAP FILE M80-41

DO NOT REMOVE FROM OFFICE