

Legend:

- - SET 5/8" IRON ROD
- - FOUND MONUMENT AS NOTED

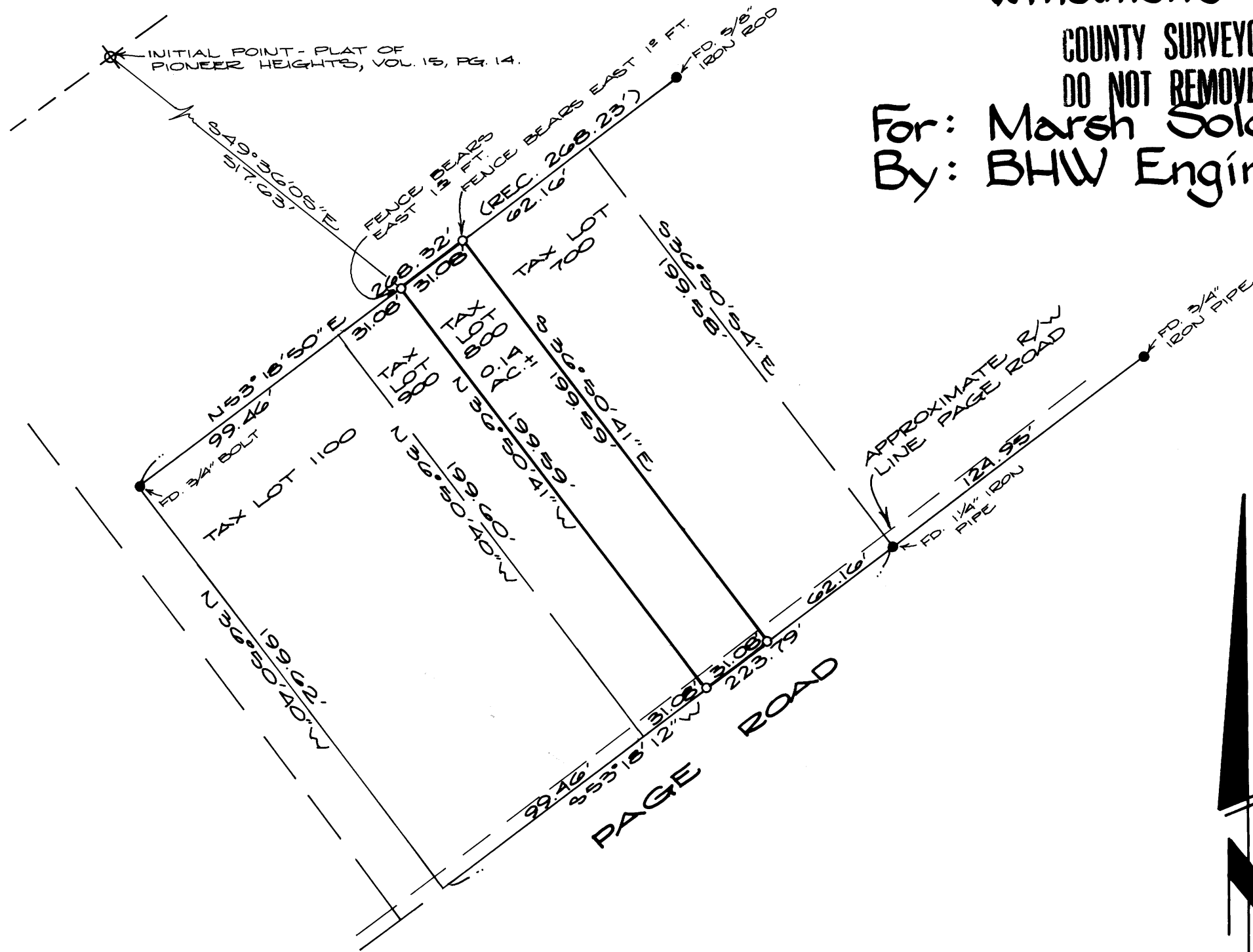
BASE BEARING PER M 74-30

FILED ✓
RECEIVED
COUNTY CLERK
TILLAMOOK COUNTY, OREGON

Survey of Tax Lot 800
in the S.E. 1/4 of the N.E. 1/4
of Section 25, T26S, R6W,
Willamette Meridian

COUNTY SURVEYORS FILE DATA
DO NOT REMOVE FROM OFFICE

For: Marsh Solomon
By: BHW Engineering &
Surveying, Inc.



Scale: 1" = 50'
October 1979

REGISTERED
PROFESSIONAL
LAND SURVEYOR

Romano E. Ware

OREGON
NOV. 16, 1973
ROMANSO E. WARE
1005

