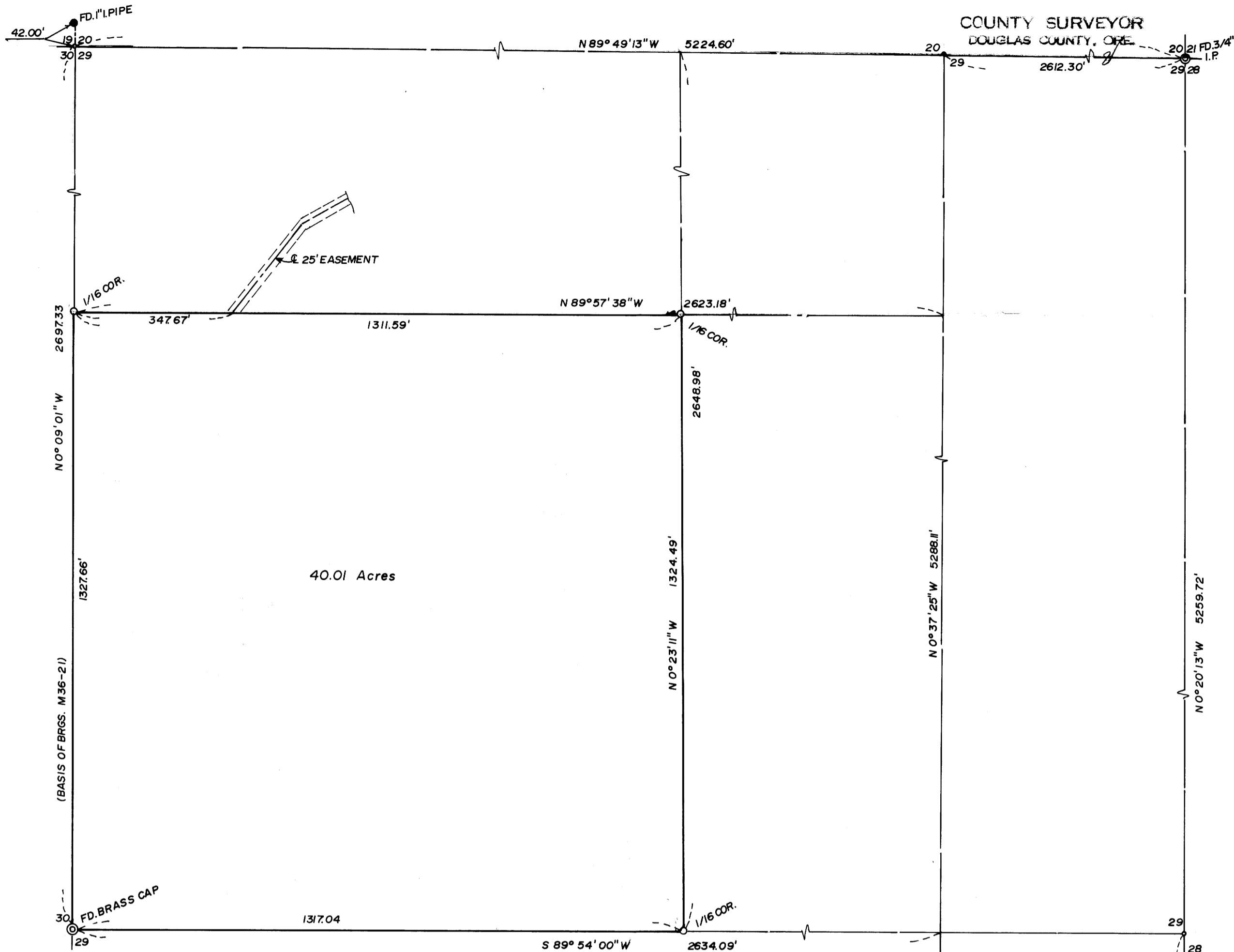


FILED
RECEIVED

OCT 4 1979

COUNTY SURVEYOR
DOUGLAS COUNTY, ORE.

MAP FILE M80-24



BOUNDARY SURVEY
for
BILLY BROCH

NW 1/4, SEC. 29, T. 21 S., R. 4 W.,
W.M., DOUGLAS COUNTY, ORE.
SEPT. 1979 SCALE: 1"=200'

COUNTY SURVEYORS FILE DATA
DO NOT REMOVE FROM OFFICE



○ = 5/8" I. ROD SET
◦ = COMPUTED POS.

SURVEYED BY:
JAMES E. ANDREWS, SURVEYING
COTTAGE GROVE, OREGON
PH. 942-9863

REGISTERED
PROFESSIONAL
LAND SURVEYOR

James E. Andrews

OREGON
JULY 14 1978
JAMES E. ANDREWS
1626

MAP FILE M80-24