

COUNTY SURVEYORS FILE DATA
DO NOT REMOVE FROM OFFICE

MINOR LAND PARTITION

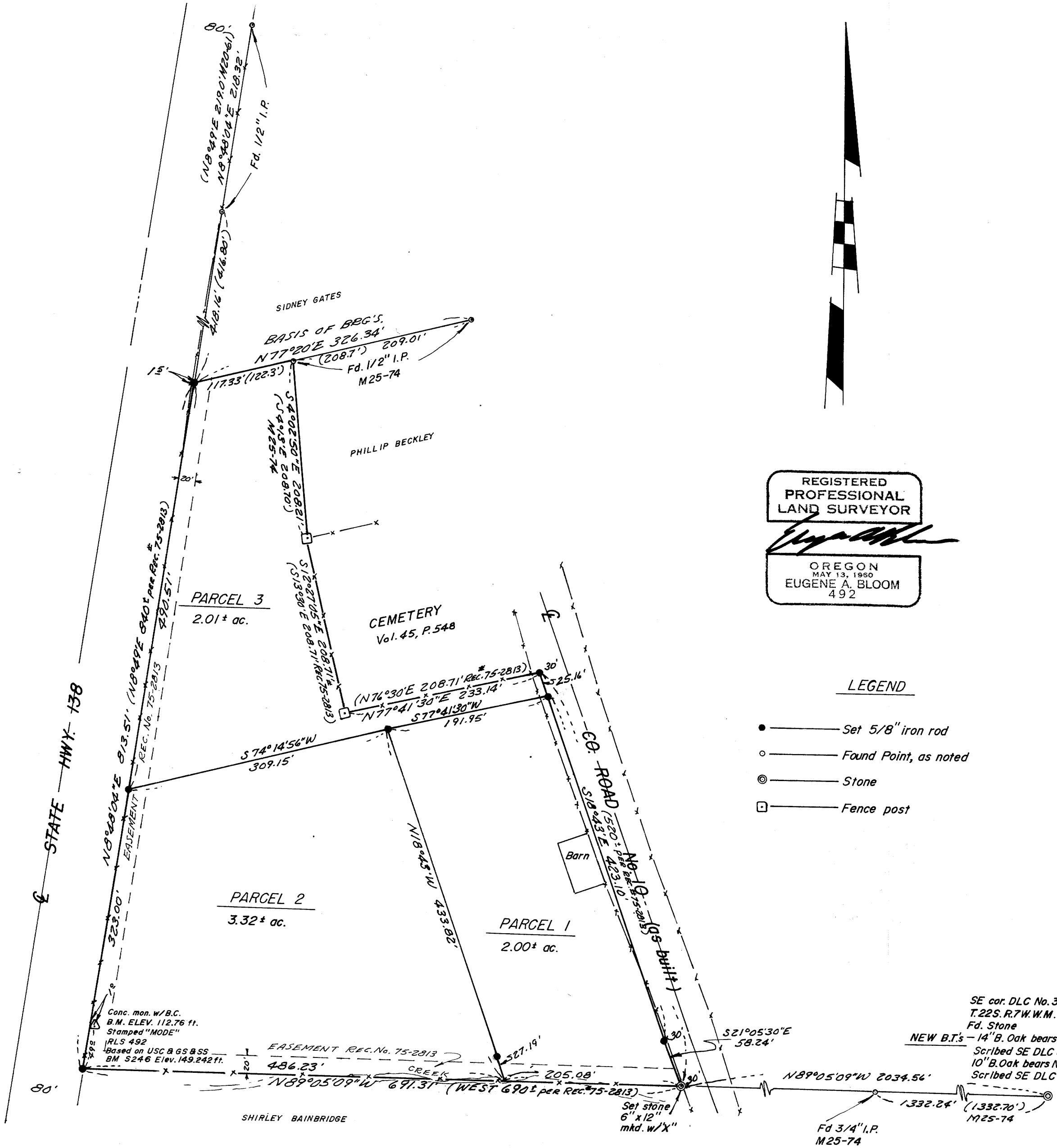
SECTION 29, T.22S. R.7W. W.M. - SEPTEMBER 1979 - SCALE: 1"=100'

FILED
RECEIVED JHM

OCT 1 1979

COUNTY SURVEYOR
DOUGLAS COUNTY, ORE.

J



REGISTERED
PROFESSIONAL
LAND SURVEYOR

Eugene A. Bloom

OREGON
MAY 13, 1980
EUGENE A. BLOOM
492

LEGEND

- — Set 5/8" iron rod
- — Found Point, as noted
- ⊙ — Stone
- — Fence post

Conc. mon. w/B.C.
B.M. ELEV. 112.76 ft.
Stamped "MODE"
RLS 492
Based on USC & G.S. B.S.S.
BM 5246 Elev. 149.242 ft.

SE cor. DLC No. 39
T.22S. R.7W. W.M.
Fd. Stone
NEW B.T.'s - 14" B. Oak bears N16°W 9.25'
Scribed SE DLC 39 BT
10" B. Oak bears N82°E 23.1'
Scribed SE DLC 39 BT

32.5 - 19 124B