

COUNTY SURVEYORS FILE DATA
DO NOT REMOVE FROM OFFICE

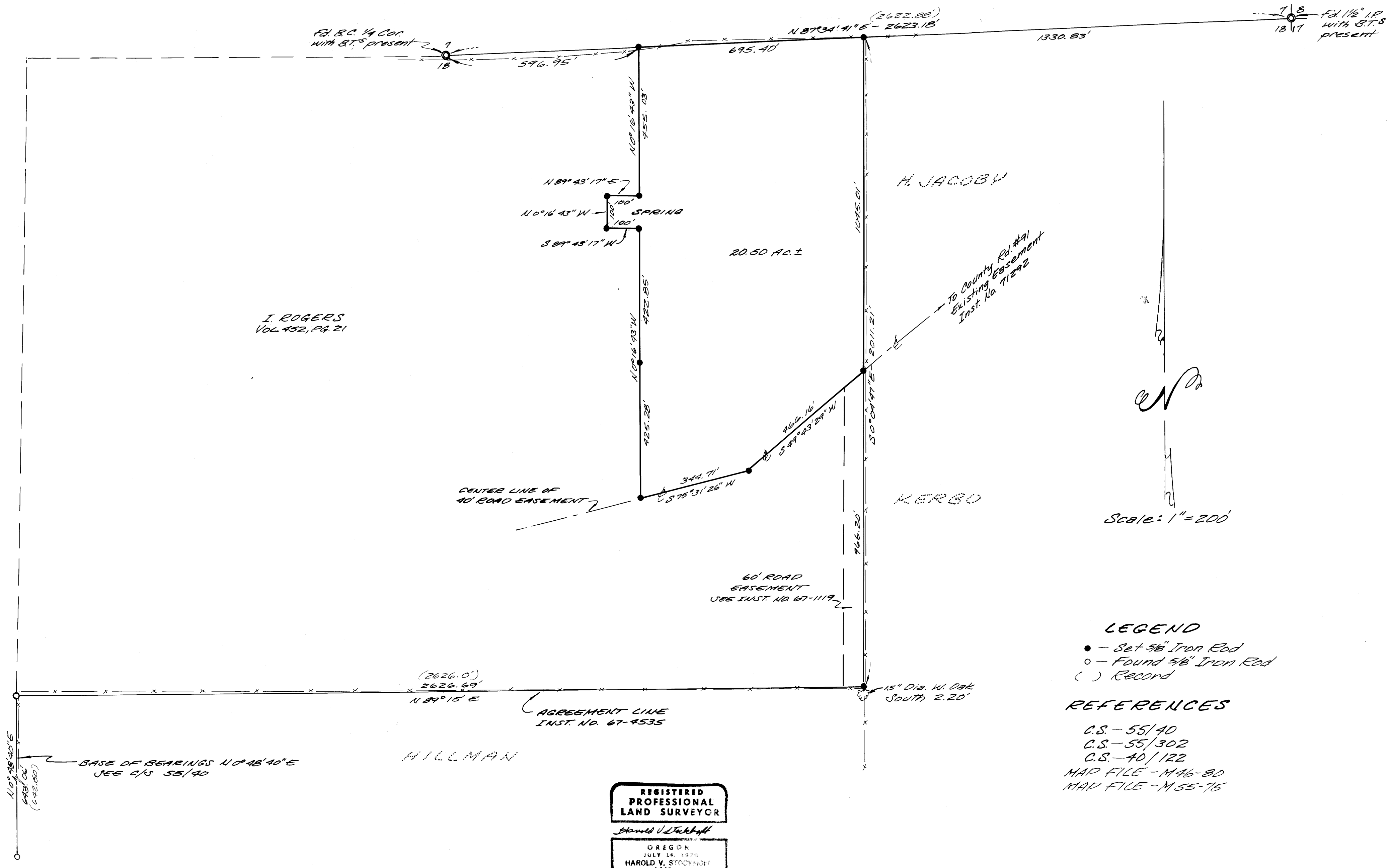
SURVEY FOR LEGAL DESCRIPTION

IN
SEC. 18, T25S, R6W, W1M,
DOUGLAS COUNTY, OREGON

FOR BRUCE W. ROGERS, UMPQUA, OREGON
BY H.S. SURVEYING
AUG. 1979

FILED *d*
RECEIVED *BS*
SEP 28 1979
COUNTY SURVEYOR
DOUGLAS COUNTY, ORE.

MAP FILE M 80-13



Scale: 1" = 200'

LEGEND

- - Set 5/8" Iron Rod
- - Found 5/8" Iron Rod
- () Record

REFERENCES

- C.S. - 55/40
- C.S. - 55/302
- C.S. - 40/122
- MAP FILE - M46-80
- MAP FILE - M55-75

REGISTERED PROFESSIONAL LAND SURVEYOR
Harold V. Stockhoff
 OREGON
 JULY 14, 1979
 HAROLD V. STOCKHOFF
 1663

MAP FILE M 80-13