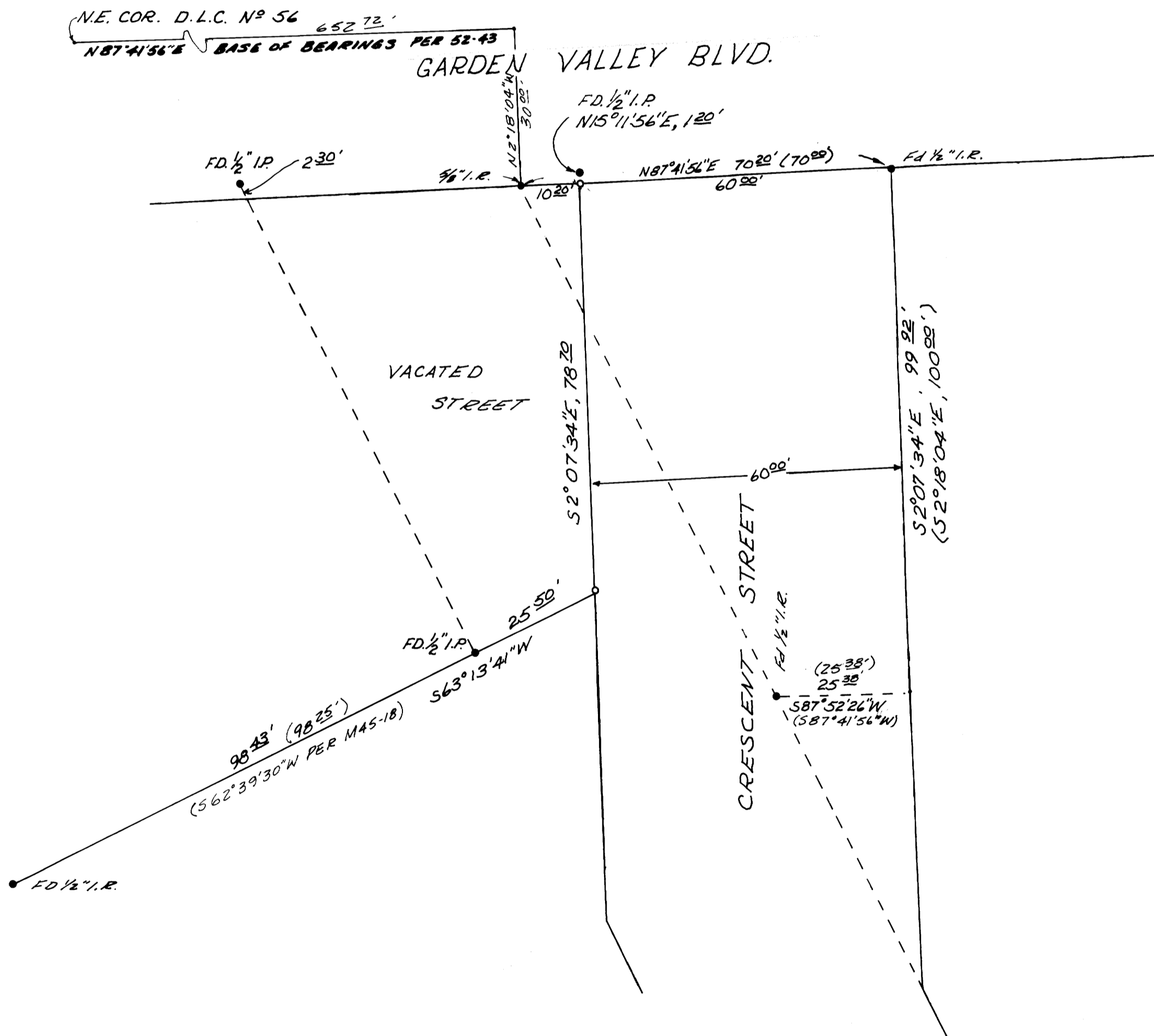


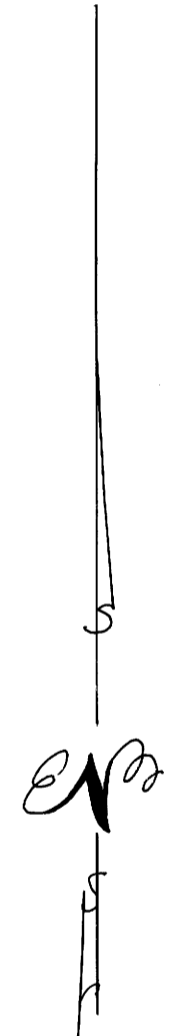
COUNTY SURVEYORS FILE DATA  
DO NOT REMOVE FROM OFFICE

PROPERTY CORNER SURVEY  
FOR  
DOUGLAS COUNTY U.S. FEDERAL CREDIT UNION  
IN  
LOT 3, BLOCK 13 & LOT 20, BLOCK 18  
JONES ADDITION TO ROSEBURG  
SEPTEMBER, 1979 SCALE: 1"=20'  
NW 1/4, SECTION 18, T 27 S, R 5 W, W.M.

FILE # 7  
RECEIVED  
COUNTY SURVEYOR  
DOUGLAS COUNTY, ORE.  
7



- LEGEND**
- FOUND MONUMENT, AS SHOWN
  - SET 3/8" IRON ROD
  - ( ) RECORD INFORMATION
  - COMPUTED CORNER, NOT SET



ALPHA & OMEGA ENGINEERS, INC.  
1622 N.E. VINE ST.  
FRONTIER VILLAGE  
ROSEBURG, OREGON 97470

NORTHSTAR SURVEYING, INC.  
687 S.W. 15TH ST.  
CORVALLIS, ORE. 97330

REGISTERED  
PROFESSIONAL  
LAND SURVEYOR  
*Russell T. Pinard*  
OREGON  
JULY 16, 1971  
RUSSELL T. PINARD  
958

MAP FILE N180-11