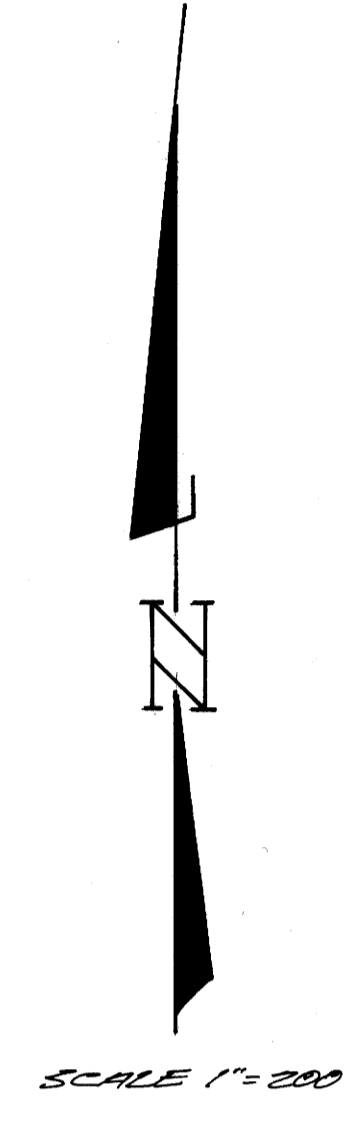
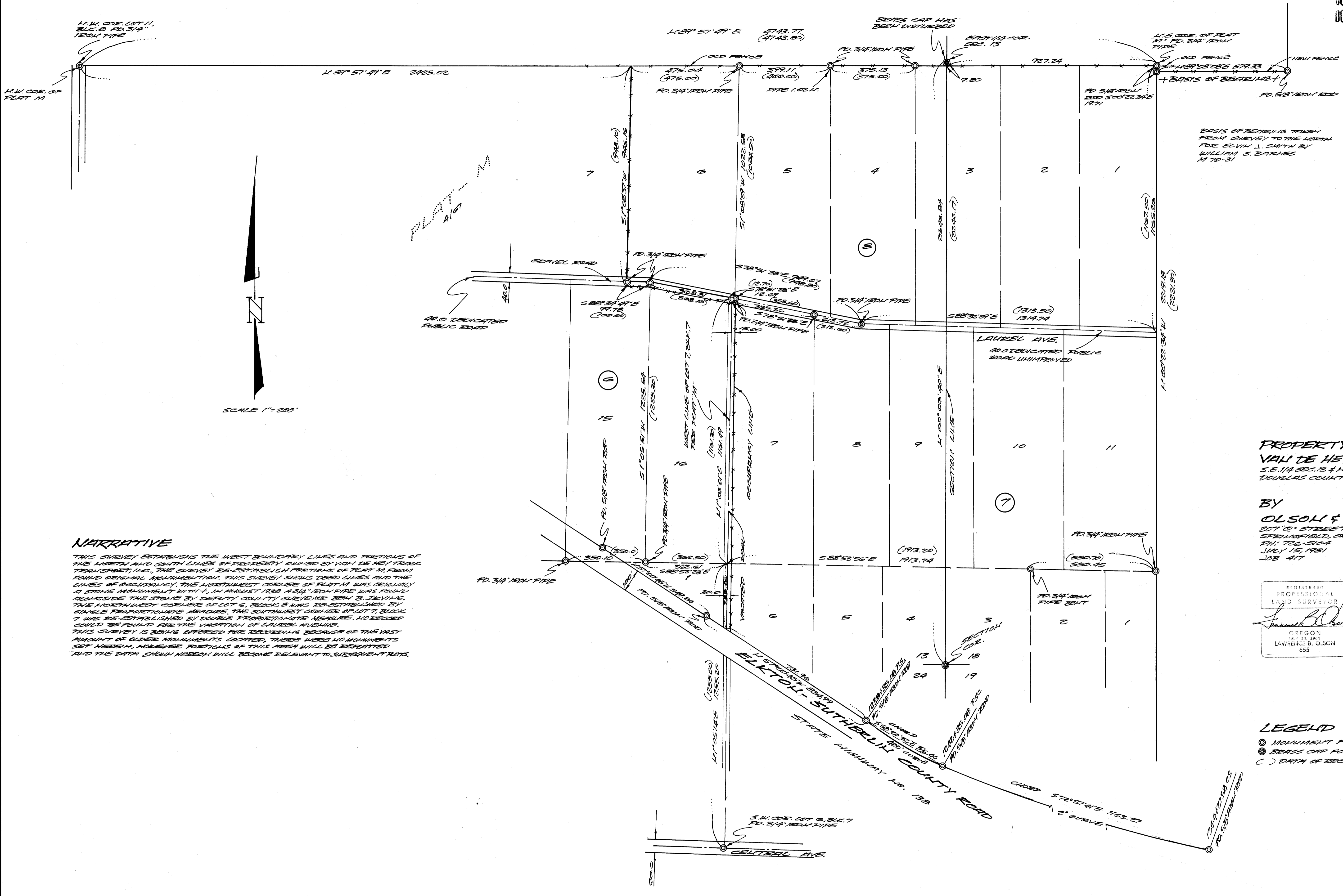


COUNTY SURVEYORS FILE DATA  
DO NOT REMOVE FROM OFFICE  
RECEIVED  
JUL 16 1981  
COUNTY SURVEYOR  
DOUGLAS COUNTY, OREGON

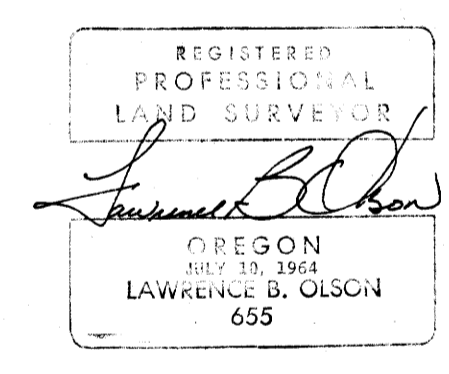


**NARRATIVE**

THIS SURVEY ESTABLISHES THE WEST BOUNDARY LINES AND PORTIONS OF THE LENGTH AND SOUTH LINES OF PROPERTY OWNED BY VAN DE HEY TRACK TRANSPORT, INC. THE SURVEY IS ESTABLISHED FROM THE PLAT M, FROM FOUND ORIGINAL MONUMENTATION. THIS SURVEY SHOWS DEED LINES AND THE LINES OF OCCUPANCY. THE NORTHWEST CORNER OF PLAT M WAS ORIGINALLY A STONE MONUMENT WITH A 1/4\"/>

**PROPERTY LINE LOCATION FOR  
VAN DE HEY TRACK TRANSPORT, INC.**  
S.E. 1/4 SEC. 13 & N.E. 1/4 SEC. 24 T.25 S., R. 6 W. N.M.  
DOUGLAS COUNTY, OREGON

BY  
**OLSON & THOMPSON, INC.**  
207 W. STREET  
STERLING, OREGON  
PH. 725-5104  
JULY 15, 1981  
JOB 477



**LEGEND**

- MONUMENT FOUND
- BEARS CAP FOUND
- ( ) DATA OF RECORD