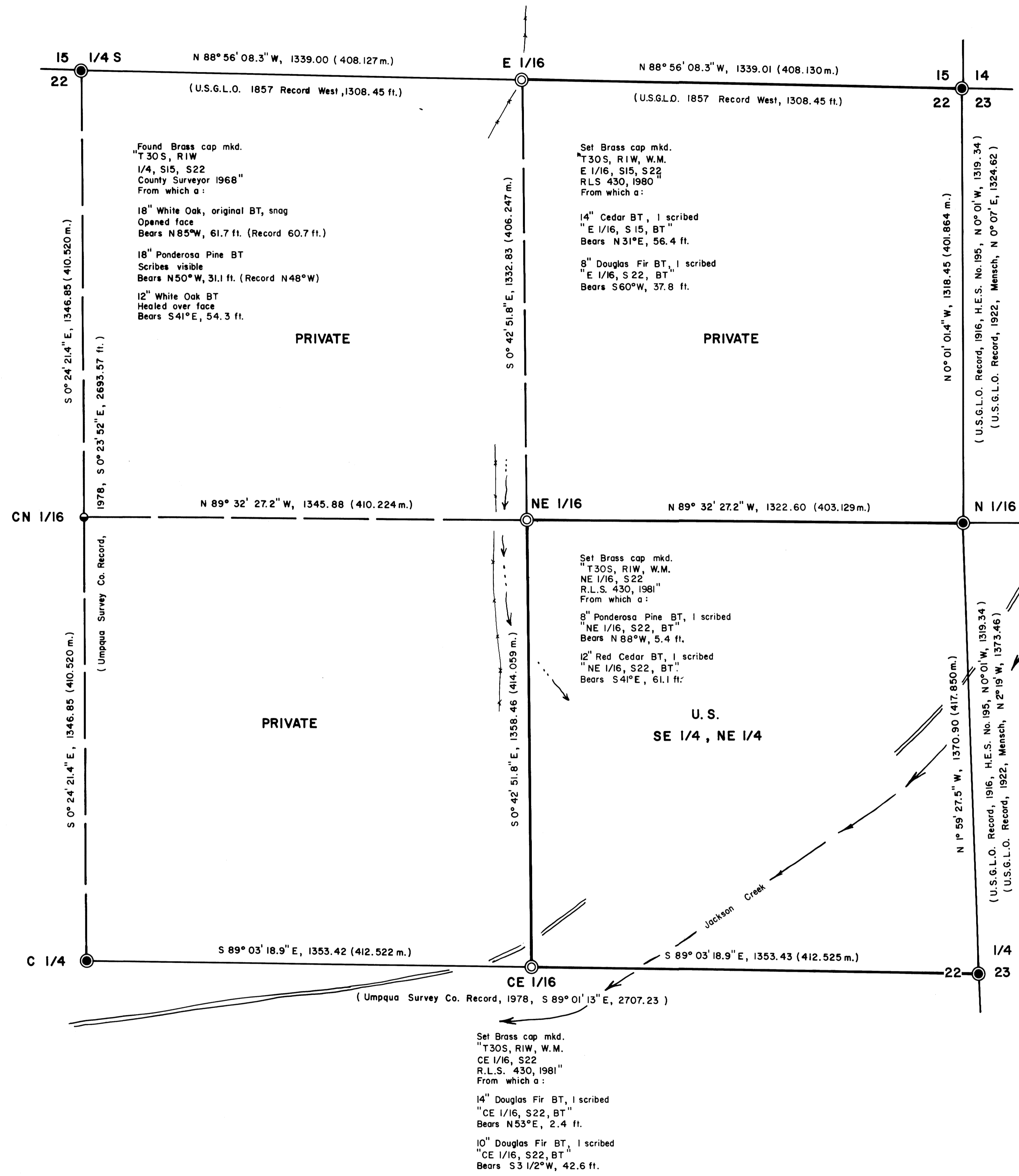
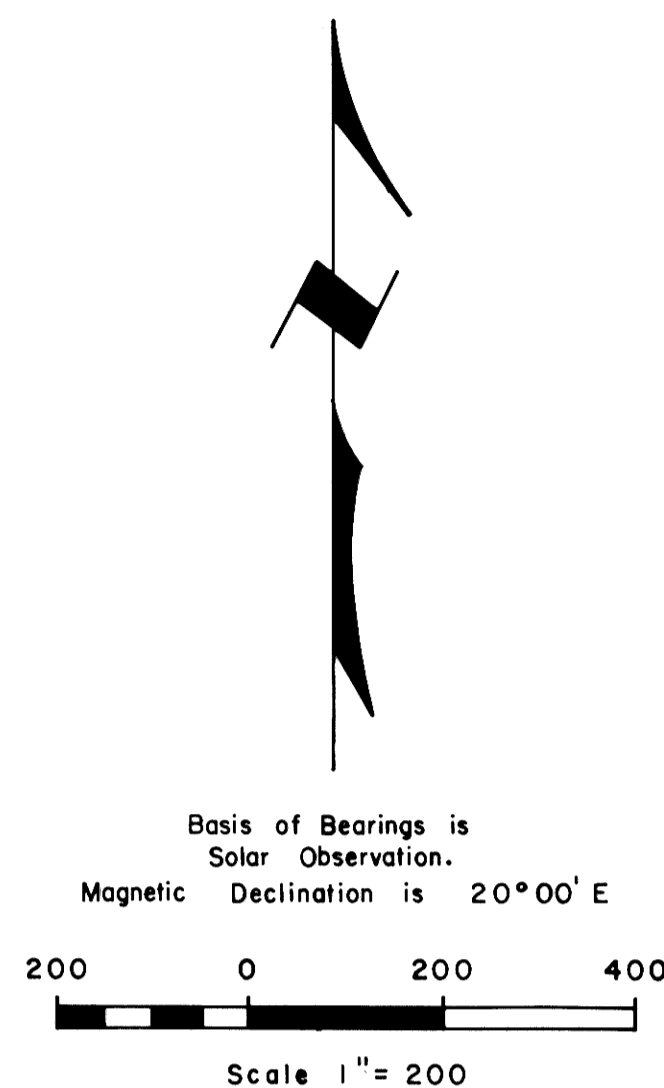


FILED *BS*
 RECEIVED *BS*
 FEB 12 1981
 COUNTY SURVEYOR
 DOUGLAS COUNTY, ORE.
BS



Found Brass cap mkd.
 T30S, R1W
 S14, S15, S22, S23
 U.S.G.L.O. 1923
 From which a:
 29" Ponderosa Pine snag, original BT
 Healed over face
 Bears N1°E, 80.7 ft. (Record 82.5 ft.)
 16" Oak, original BT
 Scribes visible
 Bears N73°W, 89.1 ft.
 (Record N75°W)
 12" Douglas Fir BT
 Healed over face
 Bears N70°E, 41.1 ft.
 8" Douglas Fir BT
 Healed over face
 Bears N73°W, 24.5 ft.
 16" Douglas Fir BT
 Healed over face
 Bears S75°W, 27.7 ft.
 10" Ponderosa Pine BT
 Healed over face
 Bears S72°E, 39.6 ft. (Record 40.4 ft.)
 Note:
 Above record bearings and distances
 shown are from Douglas Co. Surveyor
 renewal 1975/1978 *BS*

Found Brass cap mkd.
 T30S, R1W
 Corner No. 4
 H.E.S. 195
 County Survey 1970
 From which a:
 24" x 12" x 6" original corner stone mkd.
 "x H.E.S. 195" set along side
 10" Douglas fir BT
 Scribes visible
 Bears S62°W, 4.2 ft.
 9" Douglas Fir BT
 Scribes visible
 Bears S32°E, 17.8 ft.

Found Brass cap mkd.
 1/4, S22, S23
 U.S.G.L.O. 1923
 From which a:
 32" Douglas Fir, blown down, original BT
 Healed over face
 Bears S82°E, 57.4 ft.
 18" Douglas Fir, blown down, original BT
 Bears S35°W, 20.5 ft.
 8" White Fir BT
 Scribes visible
 Bears N59 1/2°E, 27.3 ft.
 6" White Fir BT
 Scribes visible
 Bears S34 1/2°W, 16.6 ft.

NARRATIVE

The survey was performed as per map for the purpose of setting property corners and marking property lines. A Franke 20" Theodolite and a "Mac 1" EDM was used. The corners of the Sections were found to as set by the U.S.B.L.M. and other surveyors as shown on map. On all BT's I scribed, I placed a brass disk marked "R.L.S. 430."

CERTIFICATE OF SURVEYOR

I, Bruce A. Shaner, registered land surveyor in the State of Oregon, hereby certify that this plat and the notes hereon or attached, are a correct representation of a survey we performed during December 1980 thru January 1981, for the U.S. Forest Service in accordance with the statutes of the State of Oregon and with the articles of the contract.

BA Shaner
 Bruce A. Shaner
 Registered Land Surveyor
 Oregon License 430



LEGEND

- Corner found
- Corner set
- Corner computed, not set
- Line Traversed and posted
- Line Traversed
- Line computed, not run
- Creek
- Paved Road

TILLER LAND SURVEY NO. 36 OF THE
 NE 1/4 OF SEC. 22, T30S, R1W, W.M.,
 DOUGLAS COUNTY, OREGON
 (Contract No. 53-04H1-9-7462N)

For: Tiller Ranger District,
 Umpqua National Forest

By: Shaner Engineering, Inc.
 P.O. Box 1430
 Roseburg, Or. 97470

January, 1981