

SURVEY IN SECTION 29, T21S, R4W, W.M.

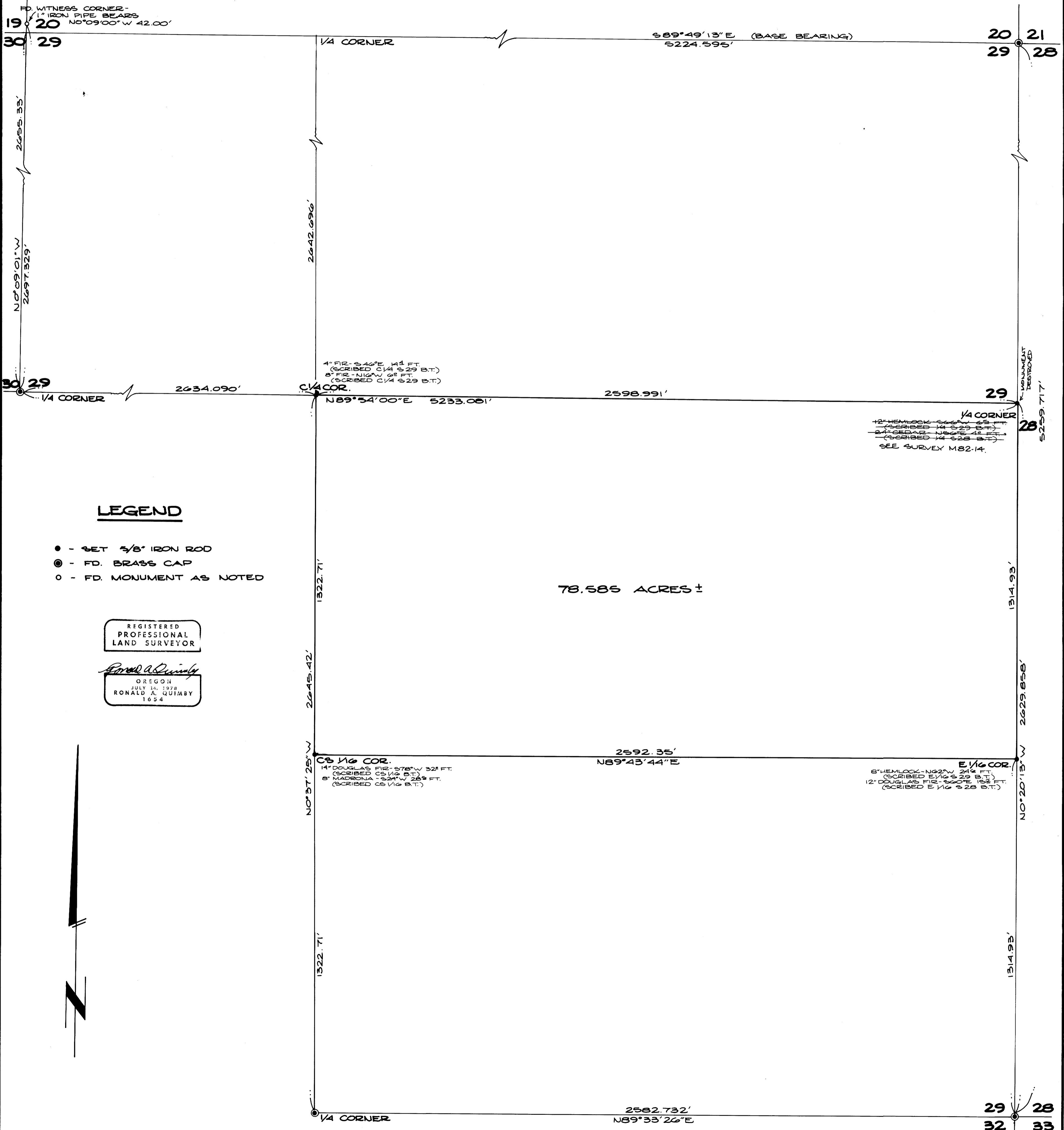
COUNTY SURVEYORS FILE DATA
DO NOT REMOVE FROM OFFICE

For: Revestco
By: BHW Engineering & Surveying, Inc.

FILED
RECEIVED
SEP 21 1979
COUNTY SURVEYOR
CLATSOP COUNTY, ORE

September 1979

Scale: 1" = 200'



LEGEND

- - SET 5/8" IRON ROD
- ⊙ - FD. BRASS CAP
- - FD. MONUMENT AS NOTED

REGISTERED
PROFESSIONAL
LAND SURVEYOR

Ronald A. Quimby
OREGON
JULY 14, 1978
RONALD A. QUIMBY
1654



MAP FILE M 79-7

MAP FILE M 79-7