

SECTION SUBDIVISION

AMENDED PLAT OF M79-13 & M79-58
SECTION 25, T21S, R5W, W.M.,
DOUGLAS COUNTY, OREGON
FOR
DALE BLACK
AND
GUISTINA LUMBER COMPANY
JANUARY 1981 SCALE: 1"=500'

COUNTY SURVEYORS FILE DATA
DO NOT REMOVE FROM OFFICE

FILED 18
RECEIVED 18
JAN 30 1981
COUNTY SURVEYOR
DOUGLAS COUNTY, OREG.
18

FOUND CORNERS

SECTION CORNER TO SECS. 23, 24, 25, 26, T21S, R5W

3/4" galv. iron pipe 2' above ground
60" D. fir N9°W 221.0' (Rec. 220.4') has well healed blaze
10" Rotted Fir stump N64°E (Rec. N72°E) @ 1.8' has visible scribing "S-T"
in single blaze
12" Rotted Fir stump S61°E 159' (Rec. 159.7')
14" D. fir N83°E 19.5' has visible scribing "T" in single blaze
12" D. fir S16°E 12.3' has visible scribing "S25 BT" in single blaze
14" D. fir S43°W 48.5' has visible scribing "S26 BT" in single blaze
8" D. fir N55°W (Rec. N57°W) 29.1' has visible scribing "S23 BT"
in single blaze
N-S, E-W Fence Corner S37°W 4.7'

W 1/16 TO SECS. 24 & 25, T21S, R5W

3/4" galv. iron pipe 6" above ground
16" W. Fir N11 1/2°E 49.4' has visible scribing "W1/16 S24 BT"
in single blaze
12" W. Fir S23°E 31.7' has visible scribing "W1/16 S25 BT"
in single blaze

1/4 CORNER TO SECS. 24 & 25, T21S, R5W

3/4" galv. iron pipe 6" above ground
8" D. fir N80°E 9.0' w/ scribing "1/4 S24 BT" in single blaze
6" D. fir S31°W 3.4' w/ scribing "1/4 S25 BT" in single blaze

SECTION CORNER TO SECS. 24 & 25, T21S, R5W, SECS. 19 & 30, T21S, R4W

9" Dia. sandstone 4" above ground
10" Now 12" D. fir S79°E 8.8' w/ well healed blaze
22" Now 32" D. fir N68°E 27.0' w/ well healed single blaze
18" Now 15" D. fir N66°W 68.6' w/ well healed single blaze
12" Now 15" D. fir S61°W 32.5' w/ well healed single blaze
N-S Fence West 1.0'

1/4 CORNER TO SECS. 25, T21S, R5W & SEC. 30, T21S, R4W

1" galv. iron pipe with Brass Cap set 12" above ground marked:

COUNTY SURVEYOR'S OFFICE
T21S
R S R
5 25 30 4
W W
1964

Fir stump S37°W 54.1' w/ opened face
36" Fir snag, 10' high, S20°E 16.5' w/ opened, rotted face
10" D. fir S78°W 6.6' w/ well healed single blaze
12" D. fir S54°E 3.3' w/ well healed single blaze
N-S Fence West 2.0'

WITNESS COR. TO SECS. 25 & 36, T21S, R5W; SECS. 30 & 31, T21S, R4W

20.5' North of Corner (Renewal 14) a 1 1/2" iron pipe 2.0' below ground
14" Ash (dead) N55°E 70.0', no visible scribing or blaze
14" Now 18" Maple S66°E 62.9' (Rec. 65.2') w/ scribing "AS" in blaze
18" Now 16" Alder S6°W 65.8' w/ scribing visible in rotted face

1/4 CORNER TO SECS. 35 & 36, T21S, R5W

3/4" iron pipe 6" above ground
6" Fir stump S78°E 48.2' w/ well healed blaze
30" Now 42" Fir stump N24°E 46.8' w/ well healed blaze
32" Now 42" Fir S54 1/2°W 26.7' w/ well healed blaze

SECTION CORNER TO SECS. 26, 27, 34, 35, T21S, R5W

3/4" iron rod 8" above ground
4' x 4' x 16" rotted post along side
36" Fir, rotten windfall N23°E 15.8' w/ opened face (OBT)
8" Now 20" Cedar (Redwood) stump S69°W 37.0' w/ opened face (OBT)
15" Maple S73°E 11.0' w/ well healed blaze
27" Maple N34°W 33.0' (Rec. 32.0') blaze rotted out
16" Now 18" D. fir N81°E 4.5' w/ well healed blaze
13" Now 18" I. Cedar S51°W 23.3' w/ well healed blaze

N.E. CORNER D.L.C. 37

Corner is a 40" D. fir in South & West fence w/ well healed blaze

WITNESS CORNER TO N.E. CORNER D.L.C. 37

1" galv. iron pipe with Brass Cap set 6" above ground marked:

DOUGLAS COUNTY SURVEYOR'S OFFICE
W.C.
10 FT. S
N.E. TO
D.L.C. COR.
37
1979

18" D. fir N51 1/2°E 85.0' double blazed & scribed
10" W. Oak S42°E 26.0' double blaze & scribed
(25') Now 30" Oak snag N48°W 54.0' w/ well healed double blaze

S.E. CORNER D.L.C. 37

3' x 1/4" Reinforced steel 1' above ground w/ 3/4" rebar & 1" bolt on N. edge,
3/4" rebar on S. edge.
34" Cedar S75°E 27.1' w/ visible scribing in partly healed double blaze
(7") Now 8" Hemlock N27°W 16.6' w/ well healed double blaze

S 1/16 CORNER TO SEC. 25, T21S, R5W, & SEC. 30, T21S, R4W

5/8" iron rod 6" above ground
1 double blazed and scribed a 6" D. fir, S71°E 5.7' 1/16 S30 BT

SET CORNERS

S.E. 1/16 CORNER, SEC. 25, T21S, R5W

5/8" iron rod 6" above ground
6" D. fir N4 1/2°W 35.6' double blazed & scribed "1/16 S25 BT"
6" D. fir S9°E 36.4' double blazed & scribed "1/16 S25 BT"

1/4 CORNER TO SECS. 25 & 26, T21S, R5W

1" galv. iron pipe with Brass Cap set 6" above ground marked

T21S, R5W
1/4 COR.
S26 | S25
1979

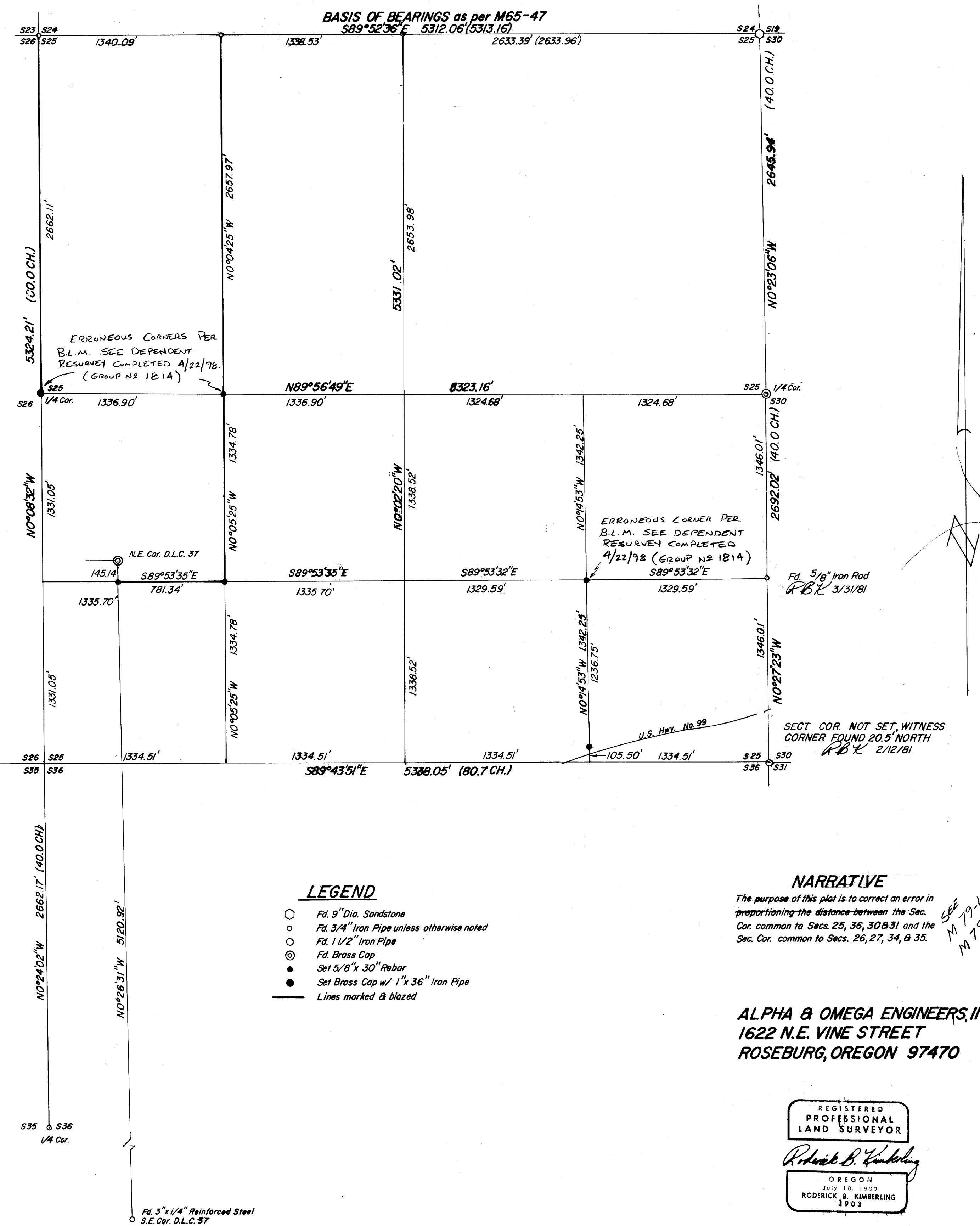
12" D. fir N86°W 29.4' double blazed and scribed "1/4 S26 BT"
10" D. fir N79 1/2°E 24.0' double blazed and scribed "1/4 S25 BT"

C.W. 1/16 CORNER, SEC. 25, T21S, R5W

5/8" iron rod 6" above ground
10" D. fir S11°E 26.0', double blazed and scribed "CW 1/16 S25 BT"
12" D. fir S60°E 38.4', double blazed and scribed "CW 1/16 S25 BT"

S.W. 1/16 CORNER, SEC. 25, T21S, R5W

5/8" iron rod 6" above ground
18" I. Cedar S38°E 41.1' double blazed and scribed "1/16 S25 BT"
18" W. Fir S81°E 29.2' double blazed and scribed "1/16 S25 BT"



LEGEND

- 9" Dia. Sandstone
- 3/4" Iron Pipe unless otherwise noted
- 1 1/2" Iron Pipe
- Brass Cap
- 5/8" x 30" Rebar
- Set Brass Cap w/ 1" x 36" Iron Pipe
- Lines marked & blazed

NARRATIVE

The purpose of this plat is to correct an error in proportioning the distance between the Sec. Cor. common to Secs. 25, 36, 30 & 31 and the Sec. Cor. common to Secs. 26, 27, 34, & 35.

ALPHA & OMEGA ENGINEERS, INC.
1622 N.E. VINE STREET
ROSEBURG, OREGON 97470

REGISTERED PROFESSIONAL LAND SURVEYOR
Roderick B. Kimberling
OREGON JULY 18, 1970
RODERICK B. KIMBERLING 1903

COUNTY SURVEYORS FILE DATA
DO NOT REMOVE FROM OFFICE