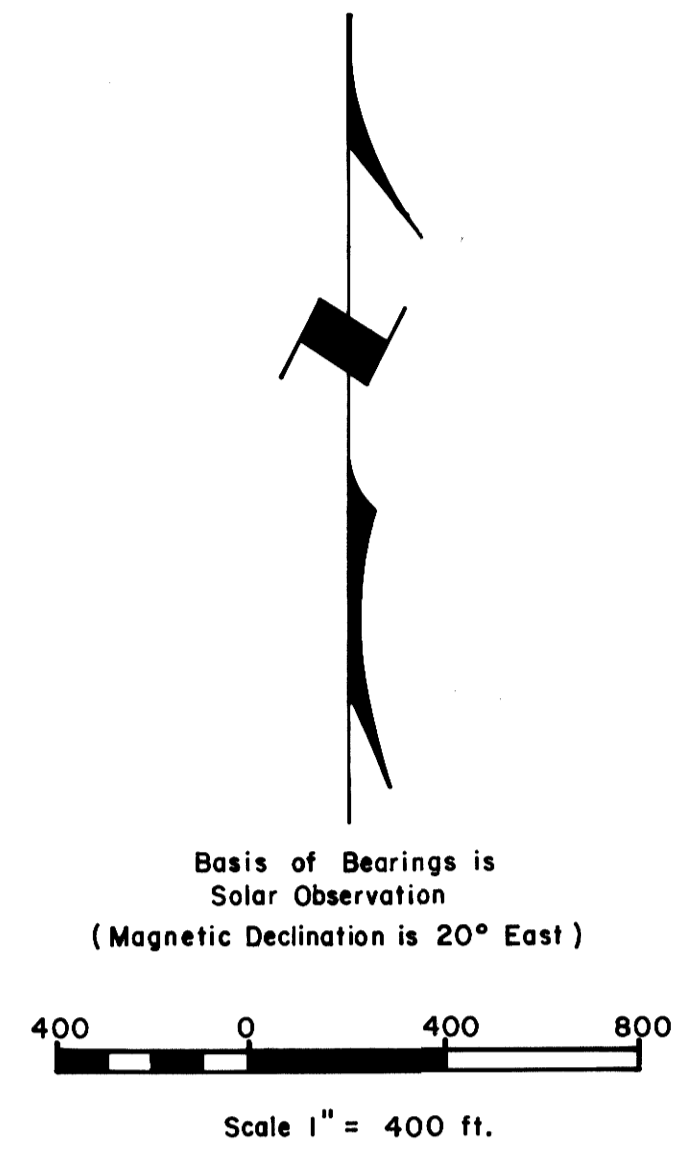


FILED *BS*  
RECEIVED *BS*  
JAN 20 1981  
COUNTY SURVEYOR  
DOUGLAS COUNTY, ORE.  
*BS*

MAP FILE *M 79-68*

NARRATIVE

The survey was performed as per map for the purpose of setting property corners and marking property lines. A Franke 20" Theodolite and a Mac 1" EDM was used. The corners of the Sections were found to be set by the U.S.B.L.M. and other surveyors as shown on map. On all BT's I scribed, I placed a brass disk marked "R.L.S. 430."



LEGEND



CERTIFICATE OF SURVEYOR

I Bruce A. Shaner, registered land surveyor in the State of Oregon, hereby certify that this and the notes hereon are a correct representation of a survey we performed during November and December, 1980, for the U.S. Forest Service in accordance with statutes of the State of Oregon and with the articles of the contract.

*BA Shaner*

Bruce A. Shaner  
Registered Land Surveyor  
Oregon License 430



TILLER LAND SURVEY NO. 36 OF  
PROPERTY LINE BETWEEN SECS.  
17 & 18, T32S, R1W, W.M.  
DOUGLAS COUNTY, OREGON  
(Contract No. 53-04H1-9-7462 N)

For: Tiller Ranger District,  
Umpqua National Forest

By: Shaner Engineering, Inc.  
P.O. Box 1430  
Roseburg, Oregon

December, 1980

Found Brass cap mkd.  
T32S, R1W  
S7, S8, S18, S17  
County Surveyor's office, 1968  
From which a:

24" Madrone original B.T.  
Healed over face  
Bears N 16° E, 19.8 ft.

18" Madrone original B.T.  
Now stub.  
Bears S 61° E, 16.2 ft.  
(Record S 67° E, 17.2 ft.)

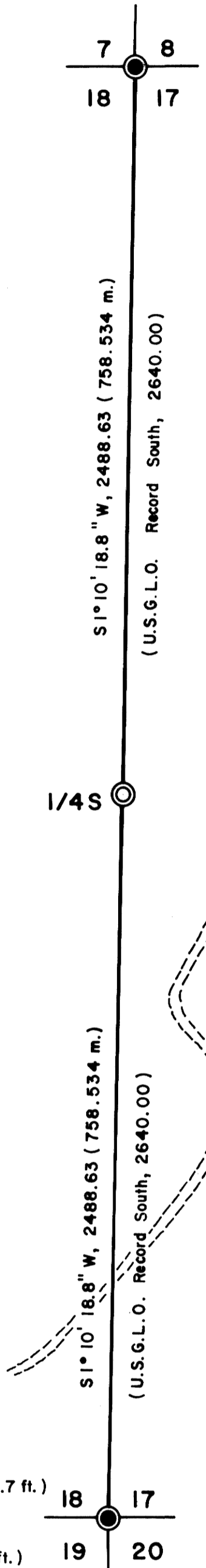
14" Douglas Fir stub, original B.T.  
Healed over face  
Bears S 56° W, 21.6 ft.  
(Record S 51° W)

8" Douglas Fir stub, original B.T.  
Scribes visible  
Bears N 46° W, 11.2 ft.

5" Live Oak B.T.  
Scribes visible  
Bears S 44° W, 12.1 ft.

20" Cedar B.T.  
Scribes visible  
Bears N 58° W, 15.0 ft.

12" Madrone B.T.  
Scribes visible  
Bears S 40° E, 40.2 ft.



U.S.

PRIVATE

Set Brass Cap mkd.  
"T32S, R1W, W.M.  
1/4, S18, S17  
RLS 430, 1980"  
From which a:  
10" D. Fir BT, I scribed  
"1/4 S18 BT"  
Bears S 77° W, 17.9 ft.  
8" D. Fir, I scribed  
"1/4 S17 BT"  
Bears S 24° E, 26.0 ft.

Found Brass cap mkd.  
"T32S, R1W  
S18, S17, S19, S20  
U.S.G.L.O. 1955"  
From which a:

26" Douglas Fir B.T.  
Healed over face.  
Bears N 14° E, 19.8 ft.

32" Douglas Fir B.T.  
Healed over face  
Bears S 63 1/2° E, 57.3 ft. (Record 58.7 ft.)

12" Douglas Fir snag original B.T.  
Scribes visible  
Bears S 28° W, 11.2 ft. (Record 10.6 ft.)

22" Douglas Fir B.T.  
Healed over face  
Bears S 54 1/4° W, 23.1 ft.

24" Douglas Fir B.T.  
Healed over face  
Bears N 5° W, 37.0 ft.

Note:  
Above record bearings and  
distances to B.T.'s are referred  
to U.S.G.L.O. records.

MAP FILE *M 79-68*