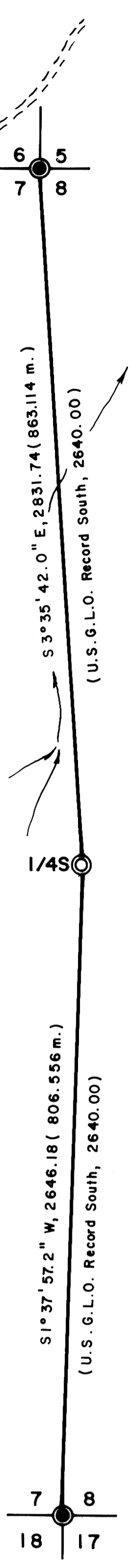


FILED *BS*  
RECEIVED *BS*  
JAN 20 1981  
COUNTY SURVEYOR  
DOUGLAS COUNTY, OREGON  
*BS*

Found Brass cap mkd.  
T 32 S, R1 W  
S6, S5, S7, S8  
1968, Co. Surveyor"  
From which a:  
22" Douglas Fir, original B.T.  
Face visible  
Bears N43° E, 4.0 ft.  
12" Fallen Douglas Fir, original B.T.  
Scribes visible  
Bears S 75° E, 4.6 ft.  
24" Douglas Fir stump original B.T.  
Bears N 38° W, 5.5 ft. to face  
(Record N 45° W, 4.0 ft.)  
26" Douglas Fir, B.T.  
Healed over face  
Bears S 29° W, 31.2 ft.  
(Record S 25° W)  
12" Douglas Fir, B.T.  
Healed over face  
Bears S 3° E, 17.5 ft.  
13" Douglas Fir, stump  
Scribes visible on down tree  
Bears N 62° W, 20.6 ft.  
(Record N 65° W)  
6" Douglas Fir B.T., scribed  
"T 32 S, R1 W, S6 B.T."  
Bears N 66° W, 28.1 ft.



U. S.

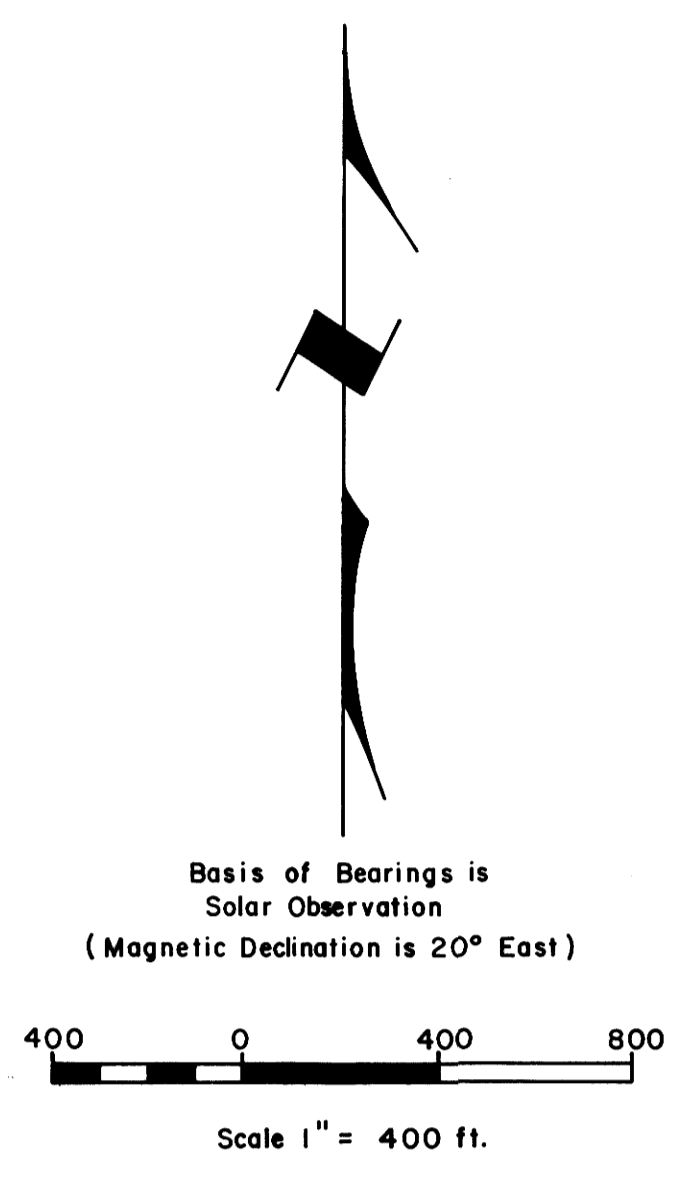
PRIVATE

Set Brass cap mkd.  
T 32 S, R1 W, W. M.  
1/4, S7, S8  
RLS 430, 1980  
From which a:  
34" White Fir, original B.T.  
Scribes visible  
Bears S 35° W, 5.3 ft.  
40" Douglas Fir stump, original B.T.  
Bark scribes "B.T." visible  
Bears N 64° E, 20.5 ft. to face  
(Record N 11° E)  
26" Cedar B.T., I scribed  
"1/4, S8, B.T."  
Bears N 2° E, 22.1 ft.  
10" Cedar B.T., I scribed  
"1/4, S7, B.T."  
Bears S 63° W, 14.6 ft.

Found Brass cap mkd.  
T 32 S, R1 W  
S7, S8, S18, S17,  
County Surveyor's office, 1968  
From which a:  
24" Madrone original B.T.  
Healed over face  
Bears N 16° E, 19.8 ft.  
18" Madrone original B.T.  
Now stub.  
Bears S 61° E, 16.2 ft.  
(Record S 67° E, 17.2 ft.)  
14" Douglas Fir stub, original B.T.  
Healed over face.  
Bears S 56° W, 21.6 ft.  
(Record S 51° W)  
8" Douglas Fir stub, original B.T.  
Scribes visible  
Bears N 46° W, 11.2 ft.  
5" Live Oak B.T.  
Scribes visible  
Bears S 44° W, 12.1 ft.  
20" Cedar B.T.  
Scribes visible  
Bears N 58° W, 15.0 ft.  
12" Madrone B.T.  
Scribes visible  
Bears S 40° E, 40.2 ft.

NARRATIVE

The survey was performed as per map for the purpose of setting property corners and marking property lines. A Franke 20" Theodolite and a "Mac 1" EDM was used. The corners of the Sections were found to be set by the U.S. B.L.M. and other surveyors as shown on map. On all BT's I scribed, I placed a brass disk marked "R.L.S. 430".



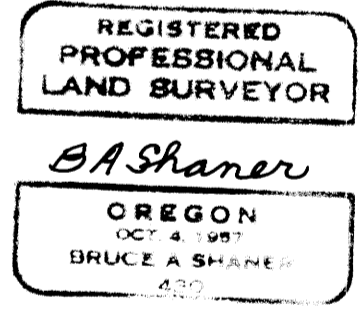
LEGEND

- Corner found
- Corner set
- True line marked with posted signs
- Rock road
- Creek

CERTIFICATE OF SURVEYOR

I Bruce A. Shaner, registered land surveyor in the State of Oregon, hereby certify that this and the notes hereon are a correct representation of a survey we performed during November and December, 1980, for the U.S. Forest Service in accordance with statutes of the State of Oregon and with the articles of the contract.

*BA Shaner*  
Bruce A. Shaner  
Registered Land Surveyor  
Oregon License 430



TILLER LAND SURVEY NO. 36 OF  
PROPERTY LINE BETWEEN SECS.  
7 & 8, T32S, R1W, W.M.  
DOUGLAS COUNTY, OREGON  
(Contract No. 53-04HI-9-7462 N)

For: Tiller Ranger District,  
Umpqua National Forest

By: Shaner Engineering, Inc.  
P.O. Box 1430  
Roseburg, Oregon

December, 1980

MAP FILE: M. 29-62

MAP FILE: M. 29-62