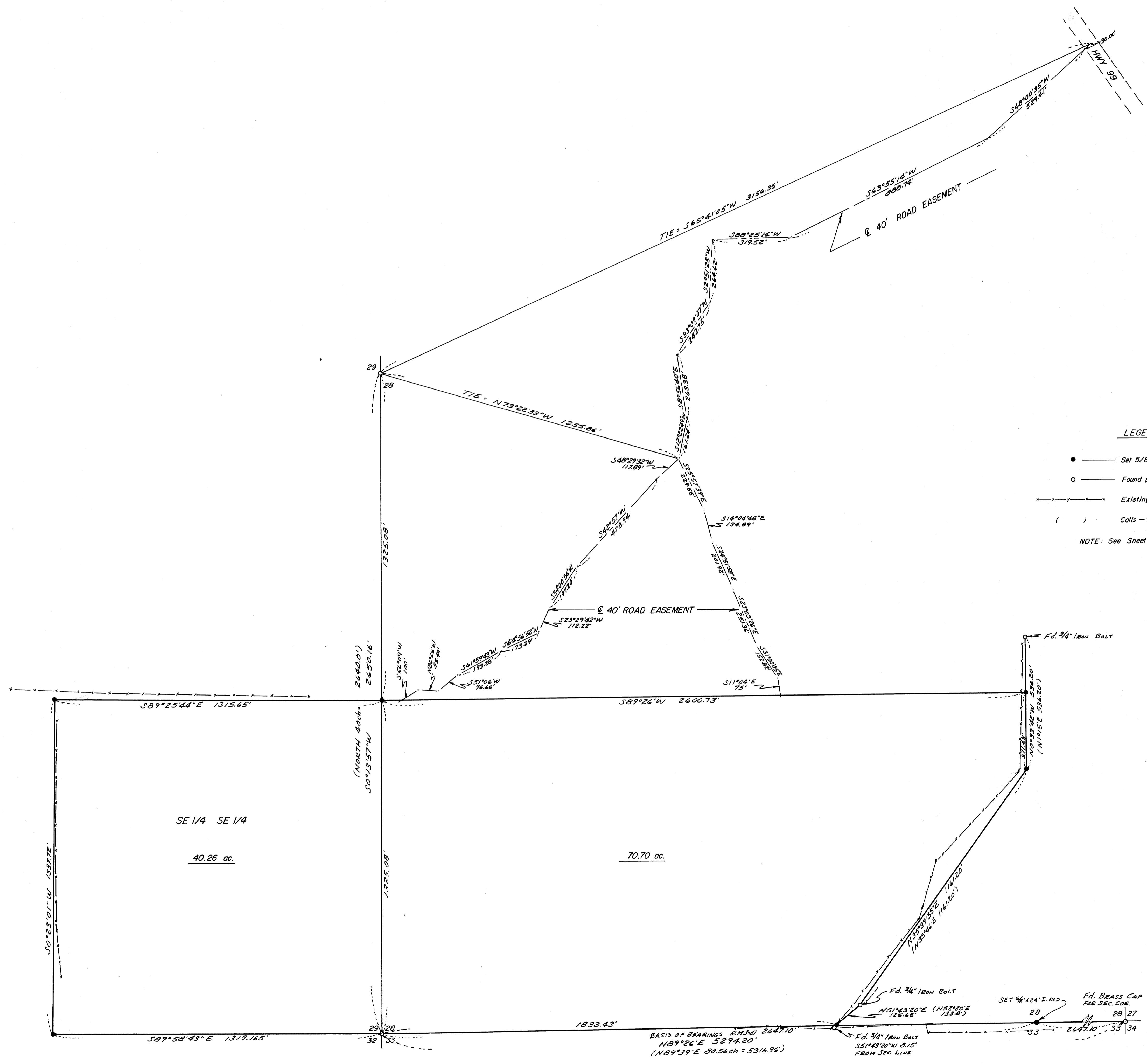


0.8 11.0 8.0  
 127  
 179-64B

COUNTY SURVEYORS FILE DATA  
 DO NOT REMOVE FROM OFFICE

FILED *BS*  
 RECEIVED *JK*  
 DEC 15 1980  
 COUNTY SURVEYOR  
 BONDLE COUNTY, ORE.  
*BS*



**LEGEND**

- — Set 5/8" x 30" iron rod (except as noted)
- — Found point is as noted herein
- x — Existing fence
- ( ) — Calls — Deed or GLO

NOTE: See Sheet 1 for Section corner data.

COUNTY SURVEYORS FILE DATA  
 DO NOT REMOVE FROM OFFICE

REGISTERED  
 PROFESSIONAL  
 LAND SURVEYOR  
*Eugene A. Bloom*  
 OREGON  
 MAY 15, 1980  
 EUGENE A. BLOOM  
 452

SURVEY FOR DESCRIPTION IN SW 1/4 SEC. 28 AND SE 1/4 SEC. 29 T.22S. R.5W.W.M.		SCALE	DRAWN BY
FOR: FUGATE & PAYNE		1" = 200'	eab
BY: A A SURVEYING SERVICE INC. P.O. Box 130, Roseburg, Oregon 97470		REVISED	
DATE	DRAWING NUMBER		
12/1980	195-80		
SHEET 2 OF 2		C.S. 1110 58 1217	